

Chickasaw Co. Recorder
 Cindy Messersmith
Fee Book 2013-1668
 10/10/2013 @1030AM
 SCC SEC COR CERT
 Book: Page: # Pages: 1
 Total Fees: \$7.00

MOHN SURVEYING INC. ROGER R. MOHN 1890 GREAT RIVER ROAD LANSING, IOWA 52151 (563) 538-4067
 TIES. DWG 8-16 SLS 9-90

UNITED STATES PUBLIC LAND SURVEY CORNER CERTIFICATE

Land Survey Monuments situated in Section 24 ^{OF 23}, Township 97 North, Range 11 West, of the Fifth Principal Meridian, Chickasaw County, Iowa.
 Previously recorded in Book 158, Page 65 in County Recorder's Office.
(book, page, document number, etc.)

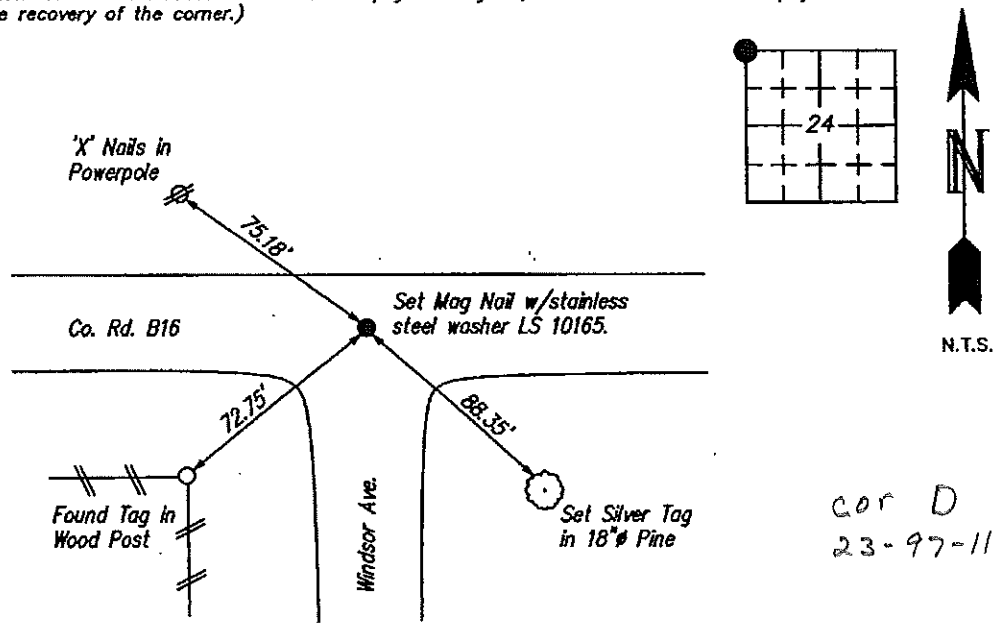
(Show reason for preparing this certificate, the evidence and detailed procedures used in establishing the corner positions and monumentation found or placed.)

Monument Description and Remarks: Found PK Nail w/o LS cap at the corner position as per recorded USPLS Corner Certificate. Iowa State Plane Coordinate System North Zone (1401) Horizontal NAD 83 (1996) coordinates are as follows: N=3908199.033 E=5294232.403

Corner monument was covered with HMA roadway pavement overlay. Set Mag Nail w/stainless steel washer LS 10165 in HMA pavement.

PLAN - VIEW

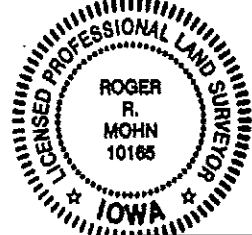
(Show a minimum of three reference ties to durable physical objects, relevant monuments and physical conditions that will enable recovery of the corner.)



I hereby certify that this land surveying document was prepared by me or under my direct personal supervision and that I am a duly Registered Land Surveyor under the laws of the state of Iowa.

Roger R. Mohn 10/9, 2013
 ROGER R. MOHN, P.E. & L.S. Iowa Registration No. 10165
 My registration expires December 31, 2014

SEAL



List Corners to be Indexed			
Corners	Section	Twp	Range
NW Cor. of	24	97N	11W