

MOHN SURVEYING INC. ROGER R. MOHN 1890 GREAT RIVER ROAD LANSING, IOWA 52151 (563) 538-4067

TIES. DWG B-16

SLSI 9-90

UNITED STATES PUBLIC LAND SURVEY CORNER CERTIFICATE

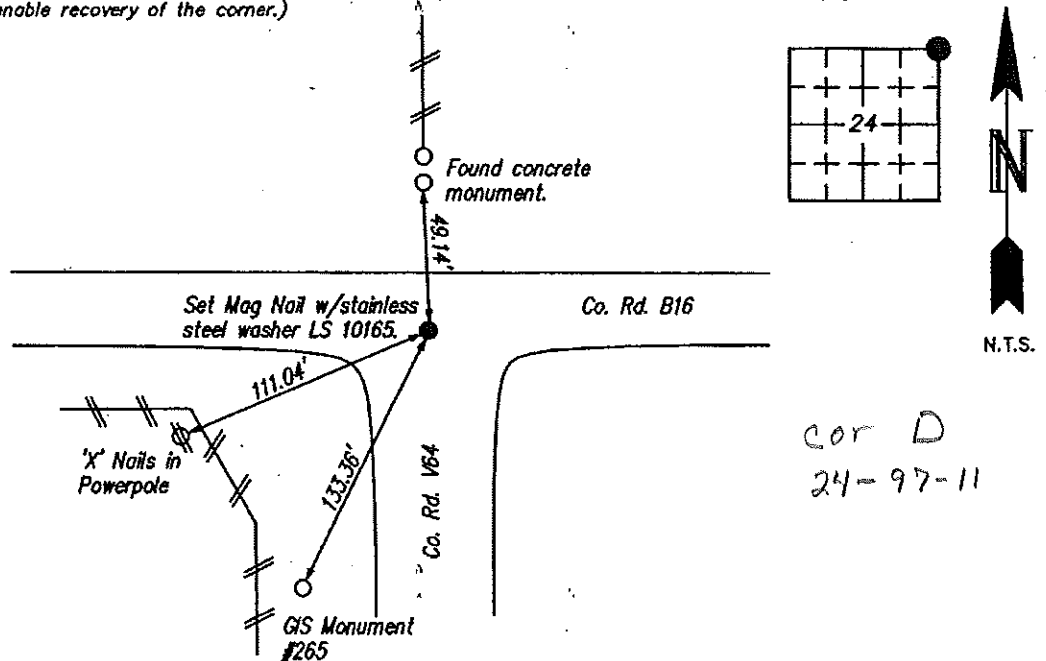
OF
 Land Survey Monuments situated in Section 24, Township 97 North, Range
11 West, of the Fifth Principal Meridian, Chickasaw County, Iowa.
 Previously recorded in Book 170, Page 465 in County Recorder's Office.
 (book, page, document number, etc.)

(Show reason for preparing this certificate, the evidence and detailed procedures used in establishing the corner positions and monumentation found or placed.)
 Monument Description and Remarks: Found Mag Nail w/stainless steel washer LS 7060 at the corner position as per recorded USPLS Corner Certificate. Iowa State Plane Coordinate System North Zone (1401) Horizontal NAD 83 (1996) coordinates are as follows: N=3908265.536 E=5299539.410

Corner monument was covered with HMA roadway pavement overlay. Set Mag Nail w/stainless steel washer LS 10165 in HMA pavement.

PLAN - VIEW

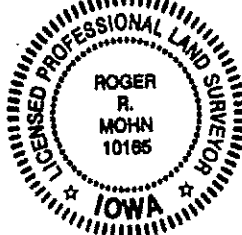
(Show a minimum of three reference ties to durable physical objects, relevant monuments and physical conditions that will enable recovery of the corner.)



I hereby certify that this land surveying document was prepared by me or under my direct personal supervision and that I am a duly Registered Land Surveyor under the laws of the state of Iowa.

Roger R. Mohn
 ROGER R. MOHN, P.E. & L.S. Iowa Registration No. 10165
 My registration expires December 31, 2014

SEAL



List Corners to be Indexed			
Corners	Section	Twp	Range
NE Cor. of	24	97N	11W

UNITED STATES PUBLIC LAND SURVEY CORNER CERTIFICATE

OF

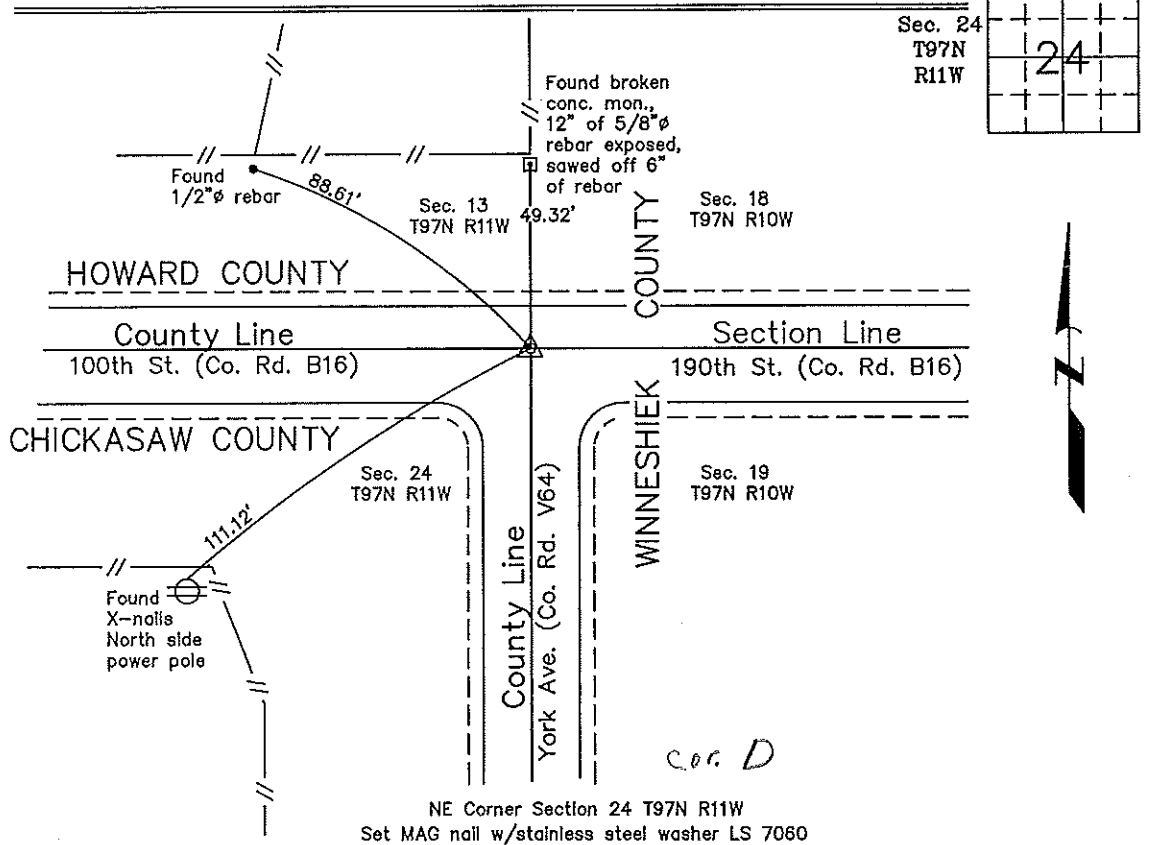
Land Survey Monuments situated in Section 24, Township 97 North, Range 11 West, of the Fifth Principal Meridian, CHICKASAW County, Iowa. Previously recorded in Book 155, Page 100 in County Recorder's Office.
(book, page, document number, etc.)

(Show reason for preparing this certificate, the evidence and detailed procedures used in establishing the corner positions and monumentation found or placed.)

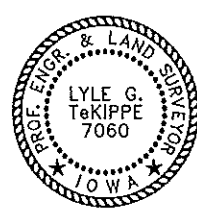
Monument Description and Remarks: NE Corner Section 24 T97N R11W: Set MAG nail w/stainless steel washer LS 7060 using coordinates established from a previous survey that had used County Engineer ties and the previous survey of Lot 1 in the SW 1/4-Fr'l SW 1/4 Section 18, T97N R10W.

PLAN - VIEW

(Show a minimum of three reference ties to durable physical objects, relevant monuments and physical conditions that will enable recovery of the corner.)



NE Corner Section 24 T97N R11W
Set MAG nail w/stainless steel washer LS 7060



I hereby certify that this land surveying document was prepared and the related survey work was performed by me or under my direct personal supervision and that I am a duly licensed Land Surveyor under the laws of the State of Iowa.
Lyle G. TeKippe 3-3-99
Lyle G. TeKippe Date
License number 7060
My license renewal date is December 31, 2000.
Sheets covered by this seal: Individual

List Corners to be Indexed			
Corners	Section	Twp.	Range
NE	24	97N	11W

Placed in the Book

UNITED STATES PUBLIC LAND SURVEY CORNER CERTIFICATE

OF

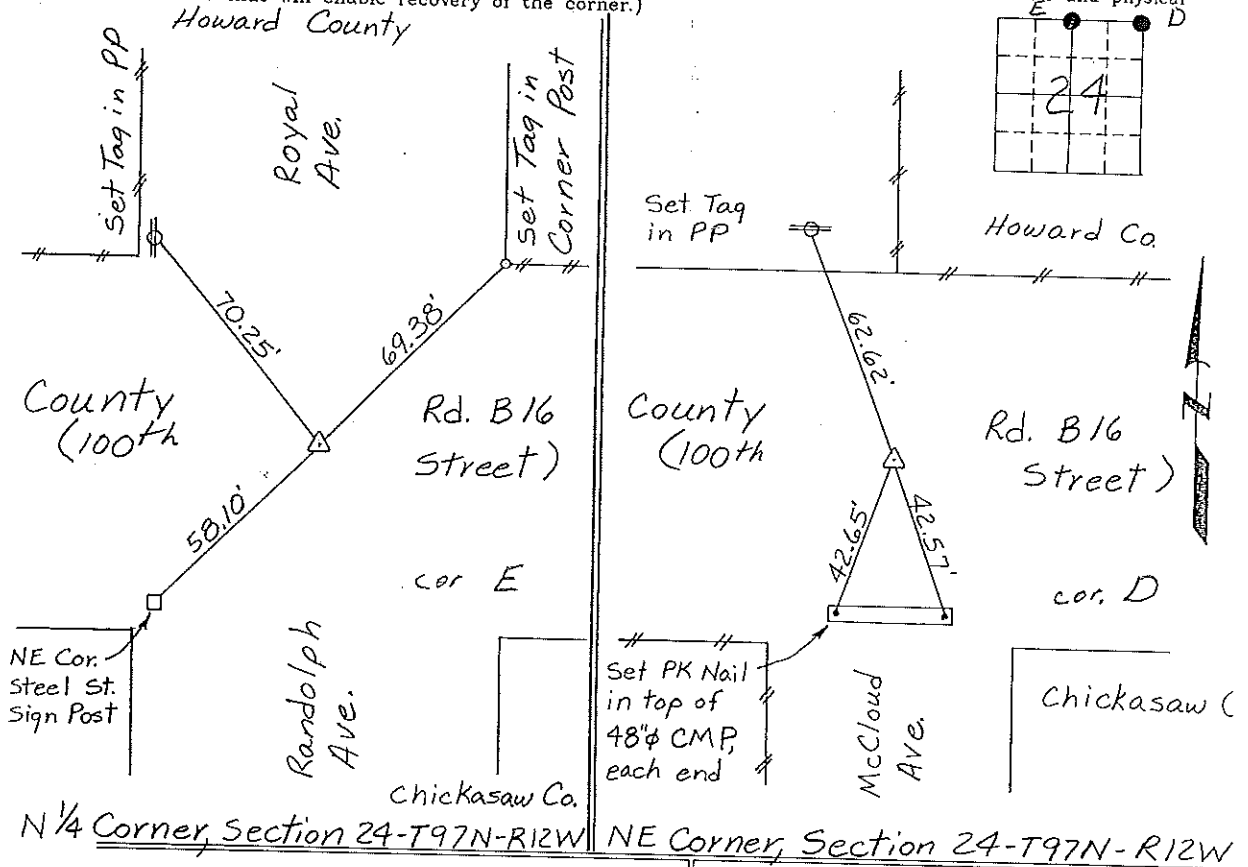
Land Survey Monuments situated in Section 24, Township 97 North, Range 12 West, of the Fifth Principal Meridian, Chickasaw County, Iowa
 Previously recorded in None in County Recorder's Office
(book, page, document number, etc.)

(Show reason for preparing this certificate, the evidence and detailed procedures used in establishing the corner positions and monumentation found or placed.)

Monument Description and Remarks: N¹/₄ Corner of Section 24-T97N-R12W: Found 3/4" Iron Pin.
NE Corner of Section 24-T97N-R12W: Found 1 1/2" Iron Pipe.

PLAN - VIEW

(Show a minimum of three reference ties to durable physical objects, relevant monuments and physical conditions that will enable recovery of the corner.)

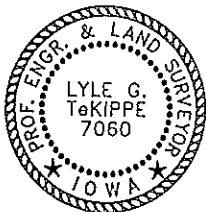


I hereby certify that the survey work was completed and this certificate was prepared by me or under my direct personal supervision and that I am a duly registered land surveyor under the laws of the state of Iowa.

Signature: Lyle G. TeKippe
 Lyle G. TeKippe

Date: 5-10-95 Reg. No. 7060
 My Registration Renewal Date is December 31, 1996

Seal



Corners	Section	Twp.	Range
N ¹ / ₄	24	97N	12W
Cor E	24-97-12		
NE	24	97N	12W
Cor A	24-97-12		

Placed in the book
 6/95

UNITED STATES PUBLIC LAND SURVEY CORNER CERTIFICATE

OF

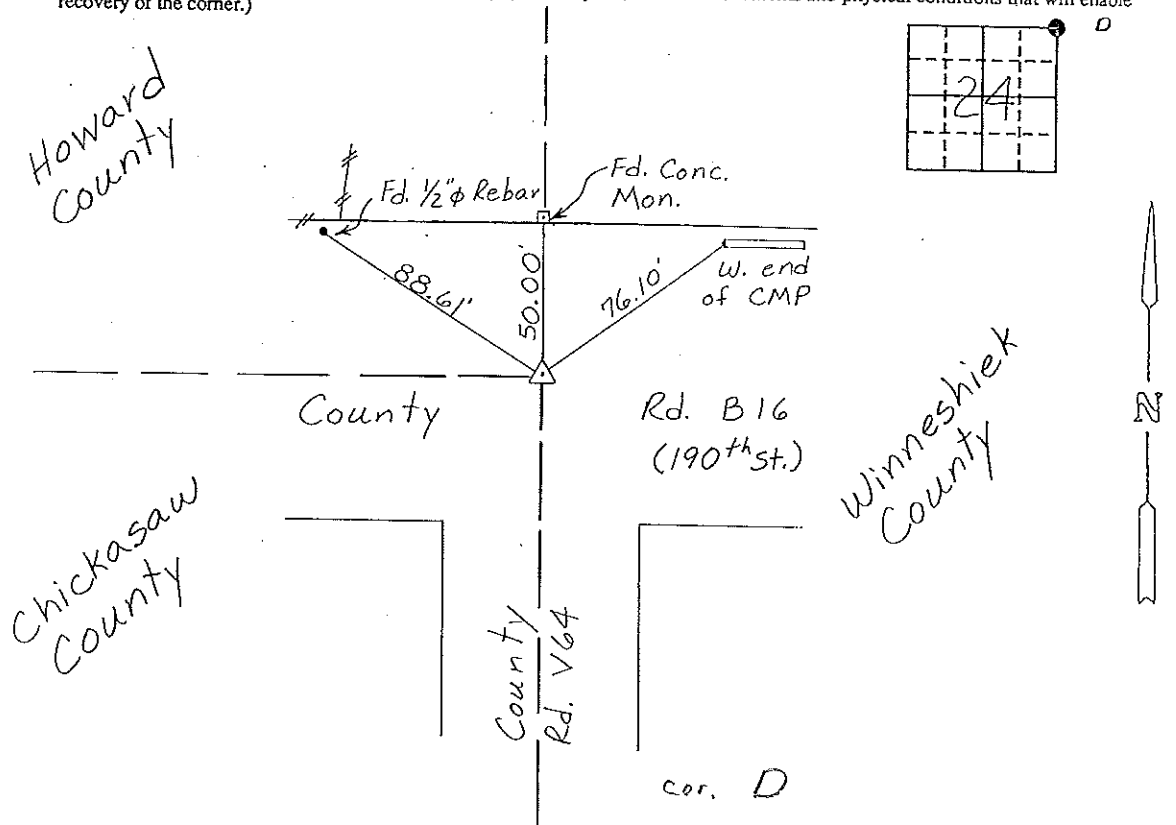
Land Survey Monuments situated in Section 24, Township 97 NORTH, Range 11 WEST, of the Fifth Principal Meridian, CHICKASAW County, Iowa. Previously recorded in NONE in County Recorder's Office.

(Show reason for preparing this certificate, the evidence and detailed procedures used in establishing the corner positions and monumentation found or placed.)

Monument Description and Remarks: NE CORNER, SECTION 24-T97N-R11W:
Set PK Nail over Mag. Reading matching County Engineer
Ties & Survey of Lot Lin the SW 1/4 - Fr'l. SW 1/4 of Section
18-T97N-R10W.

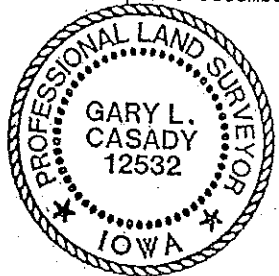
PLAN - VIEW

(Show a minimum of three reference ties to durable physical objects, relevant monuments and physical conditions that will enable recovery of the corner.)



I hereby certify that the survey work was completed and this certificate was prepared by me or under my direct personal supervision and that I am a duly registered land surveyor under the laws of the state of Iowa.

Signature: Gary L. Casady
Name typed or printed: Gary L. Casady
Date: 5-20-94 Reg. No. 12532
My Registration Expires December 31, 1994



SEAL

Corners	Section	Twp	Range
NE	24	97N	11W
Corner 0	24	97	11

Placed in tie book
6/14/94
JFM