

UNITED STATES PUBLIC LAND SURVEY CORNER CERTIFICATE

Corner B:  
Section 23-97-11  
As referred to in  
Engr Tie Book.

OF 23

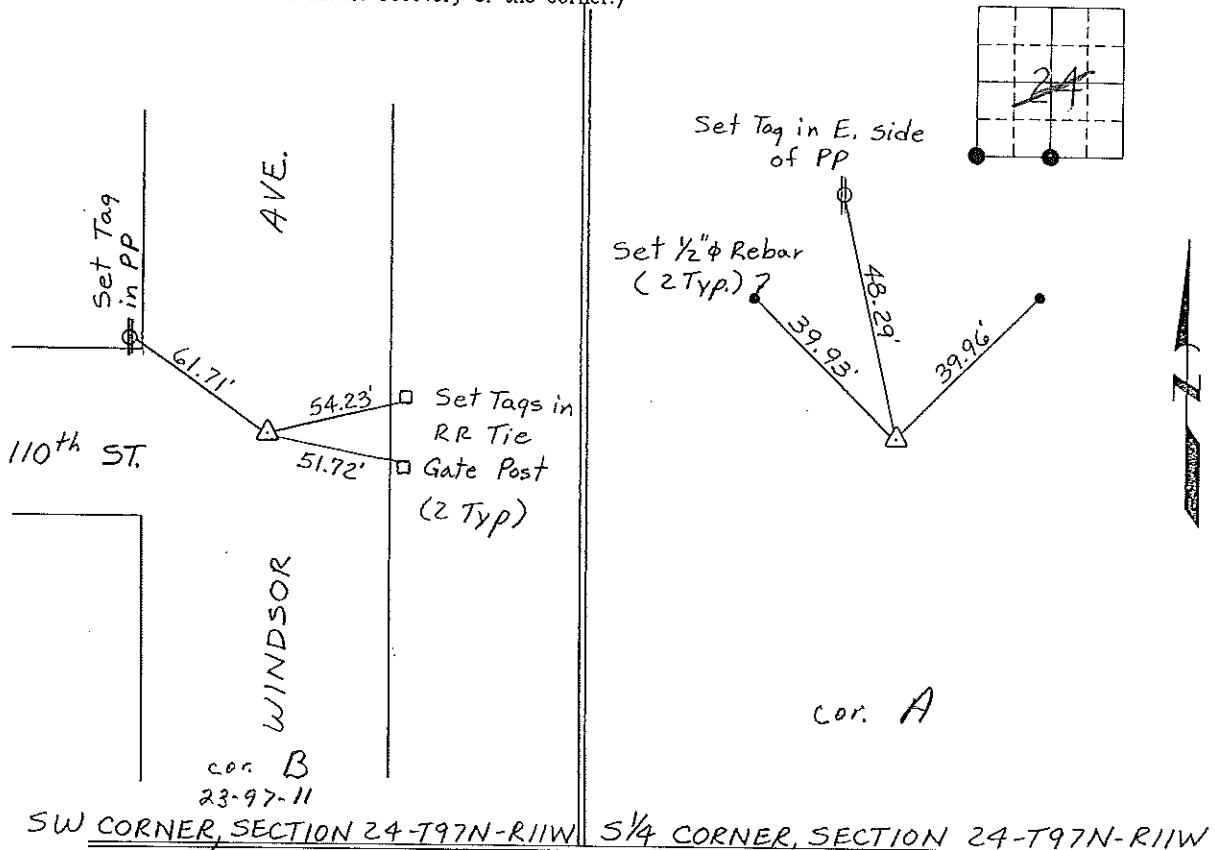
Land Survey Monuments situated in Section 24, Township 97 North, Range 11 West, of the Fifth Principal Meridian, CHICKASAW County, Iowa.  
Previously recorded in NONE in County Recorder's Office.  
(book, page, document number, etc.)

(Show reason for preparing this certificate, the evidence and detailed procedures used in establishing the corner positions and monumentation found or placed.)

Monument Description and Remarks: SW CORNER, SECTION 24-T97N-R11W:  
Found 3/4" sq. Iron Bar  
S 1/4 CORNER, SECTION 24-T97N-R11W: Set 1/2" Rebar w/cap by intersecting  
Lines from the SW Cor of Section thru Shot 33' South of Fence Brace Post;  
Shot at Fence Jet's approx. 1/2 mile South @ probable Center of Section  
25-T97N-R11W & shot North on same Fence.

PLAN - VIEW

(Show a minimum of three reference ties to durable physical objects, relevant monuments and physical conditions that will enable recovery of the corner.)

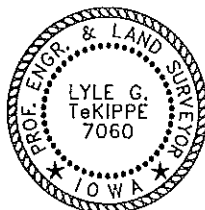


I hereby certify that the survey work was completed and this certificate was prepared by me or under my direct personal supervision and that I am a duly registered land surveyor under the laws of the state of Iowa.

Signature: Lyle G. TeKippe  
Lyle G. TeKippe

Date: 6-1-95 Reg. No. 7060  
My Registration Renewal Date is December 31, 1996

Seal



List Corners to be Indexed			
Corners	Section	Twp.	Range
SW	24	97N	11W
	Cor B	23-97-11	
S 1/4	24	97N	11W
	Cor A	24-97-11	

*Placed in tie book*  
*6/1/95*