

Prepared by & Return to: Herald - Reicks Surveying, 10 East Main Street, New Hampton, IA 50659, Ph. 641-394-2725

### UNITED STATES PUBLIC LAND SURVEY CORNER CERTIFICATE

Land Survey Monuments situated in Section 24, Township 97 North, Range 11 West of the Fifth Principal Meridian, Chickasaw County, Iowa. 1.) Not previously recorded the County Recorder's office.  
 2.) Previously recorded in Doc. #2007-2498 in the County Recorder's office.

This certificate is being prepared in compliance with Iowa Code Chapter 355.11 because:

- 1  There is no certificate on file for this corner.
- There are no longer three valid ties of record.
- There are changes to reference ties of record.
- 2  There is change of monumentation of record.
- To clarify description of record monument (ties).

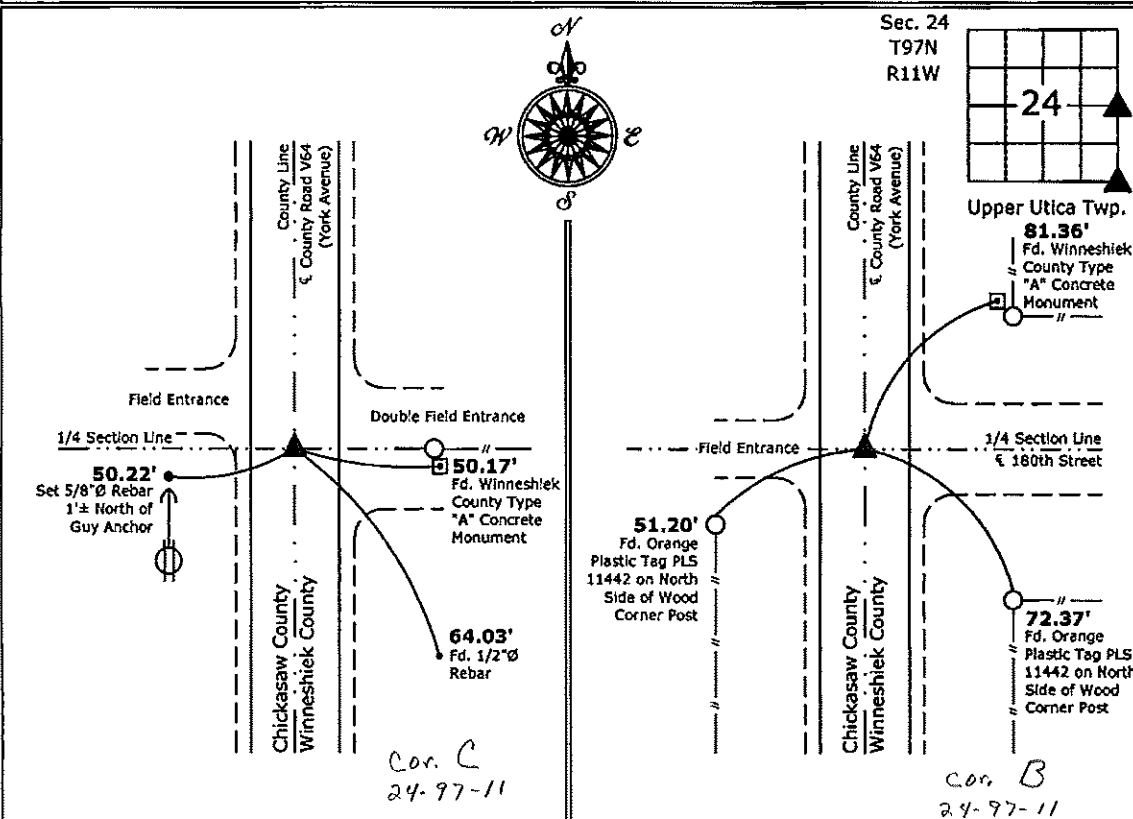
Monument Description and Remarks:

1.) **East 1/4 Corner:** Set 1"Ø Bronze Survey Marker PLS 19211 at previous location (Fd. Cut-X) by means of coordinates obtained prior to highway reconstruction, Project #STP-S-CO96-(99)--5E-96.

2.) **Southeast Corner:** Set 1"Ø Bronze Survey Marker PLS 19211 at previous location (Fd. Cut-X) by means of coordinates obtained prior to highway reconstruction, Project #STP-S-CO96-(99)--5E-96.

### PLAN - VIEW

(Show a minimum of three reference ties to durable physical objects, relevant monuments and physical conditions that will enable recovery of the corner.)



1.) **East 1/4 Corner Section 24-97-11**  
 Set 1"Ø Bronze Survey Marker PLS 19211

2.) **Southeast Corner Section 24-97-11**  
 Set 1"Ø Bronze Survey Marker PLS 19211



I hereby certify that this land surveying document was prepared and the related survey work was performed by me or under my direct personal supervision and that I am a duly licensed Land Surveyor under the laws of the State of Iowa.

*Kirk D. Reicks 9-11-13*  
 Kirk D. Reicks Date:

License number 19211  
 My license renewal date is December 31, 2014.  
 Sheets covered by this seal: Individual sheet only

List Corners to be Indexed			
Corners	Section	Twp.	Range
E 1/4	24	97	11
SE	24	97	11

Project Number: 2013-004

FB: Chickasaw County 4, Pgs. 68-69

Chickasaw Co. Recorder  
 Cindy Messersmith  
**Fee Book 2007-2498**  
 12/31/2007 @0919AM  
 SCC SEC COR CERT  
 Book: Page: # Pages: 1  
 Total Fees: \$7.00

Corner B:  
 Section 24-97-11  
 As referred to in  
 Engr. Tie Book.

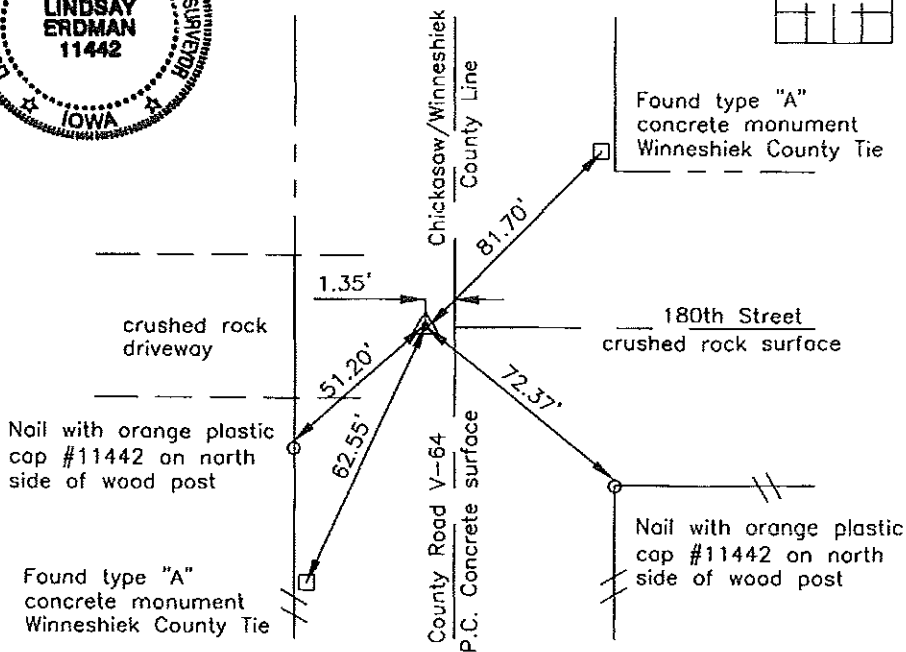
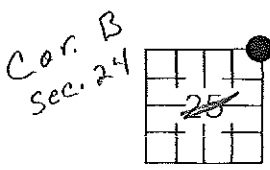
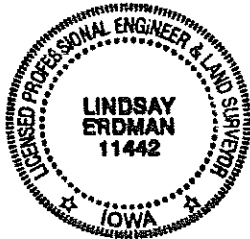
Prepared by: Erdman Engineering, P.C., 708 Commerce Drive, P.O. Box 246, Decorah, Iowa 52101 (563) 382-4194

United States Public Land Survey Corner Certificate  
 of 24

Land Survey Monuments situated in Section 25, Township 97, Range 11 West of the 5th Principal Meridian in Chickasaw County, Iowa. Previously recorded in does not apply in the county Recorder's Office.

Monument Description and Remarks: This certificate is prepared in accordance with Section 193C of the Code of Iowa. No previous certificate has been filed for this corner location. We found no evidence of a monument in the field other than the county roads. Chickasaw County Engineer's Reference Ties show that an iron pin was set on the west side of a stone in 1931. Winneshiek County Engineer's Reference Ties show that a concrete monument was set in 1939 over the stone and iron pin. We were not able to search for the concrete monument due to the P.C. Concrete surface of the county road. We found two type "A" concrete monuments used previously as tie markers. From these ties we cut an "X" in the P.C. Concrete pavement as the NE Corner of Section 25, Township 97 North, Range 11 West.

Plan-View



Cor B  
 24-97-11

I hereby certify that this land surveying document was prepared and the related survey work was performed by me or under my direct personal supervision and that I am a duly licensed Land Surveyor under the laws of the State of Iowa.

Signature: Lindsay Erdman  
 Lindsay Erdman, P.E. and P.L.S. Iowa License Number 11442

Date: 12/21/07

My license renewal date is December 31, 2008

Corner(s) to be Indexed

Corner	Section	Township	Range
NE	25	97	11

**UNITED STATES PUBLIC LAND SURVEY CORNER CERTIFICATE**  
OF

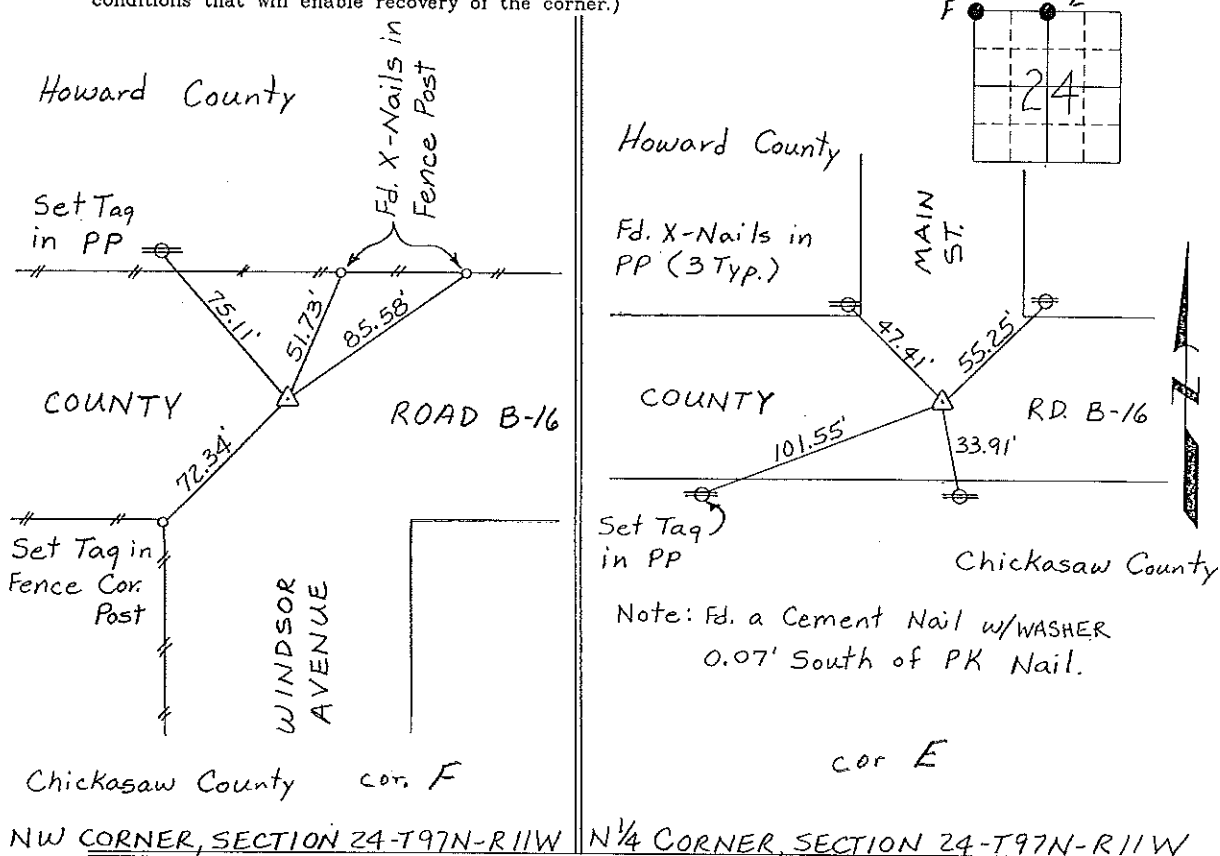
Land Survey Monuments situated in Section 24, Township 97 North, Range 11 West, of the Fifth Principal Meridian, CHICKASAW County, Iowa.  
Previously recorded in NONE in County Recorder's Office.  
(book, page, document number, etc.)

(Show reason for preparing this certificate, the evidence and detailed procedures used in establishing the corner positions and monumentation found or placed.)

Monument Description and Remarks: NW CORNER, SECTION 24-T97N-R11W: Found PK Nail.  
N 1/4 CORNER, SECTION 24-T97N-R11W: Found PK Nail.

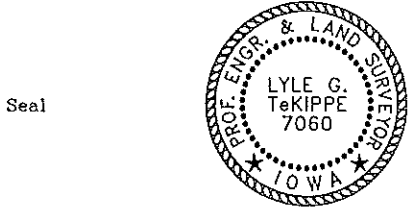
**PLAN - VIEW**

(Show a minimum of three reference ties to durable physical objects, relevant monuments and physical conditions that will enable recovery of the corner.)



I hereby certify that the survey work was completed and this certificate was prepared by me or under my direct personal supervision and that I am a duly registered land surveyor under the laws of the state of Iowa.

Signature: Lyle G. TeKippe  
Lyle G. TeKippe  
Date: 6-1-95 Reg. No. 7060  
My Registration Renewal Date is December 31, 1996



List Corners to be Indexed			
Corners	Section	Twp.	Range
NW	24	97N	11W
	Cor D 23	97-11	
N 1/4	24	97N	11W
	Cor E 24	97-11	

*PK Nail in the back*  
*6/95*