

April 05, 2006
2006-0715

TEKIPPE ENGINEERING, P.C., 128 South Vine Street, West Union, Iowa 52175 Phone (663) 422-5131

UNITED STATES PUBLIC LAND SURVEY CORNER CERTIFICATE

OF

Land Survey Monuments situated in Section 25, Township 97 North, Range 11 West of the Fifth Principal Meridian, CHICKASAW County, Iowa. Previously recorded in none in County Recorder's Office. (book, page, document number, etc.)

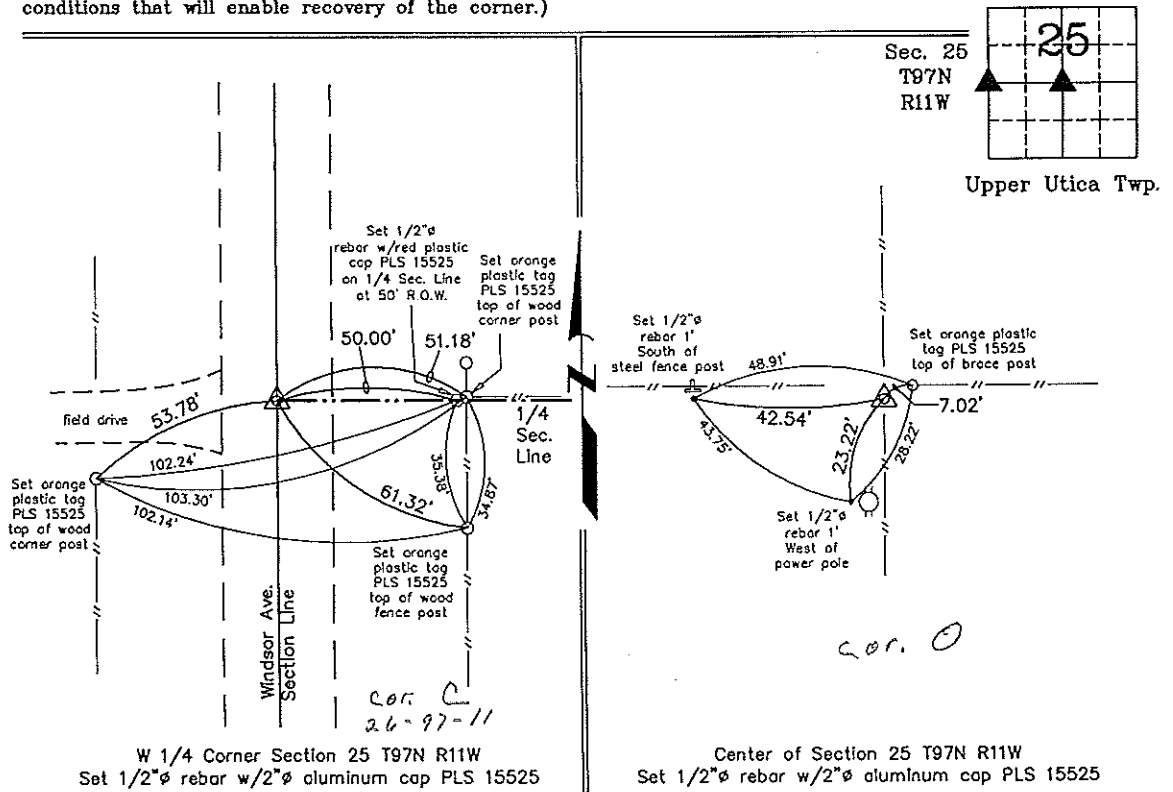
(Show reason for preparing this certificate, the evidence and detailed procedures used in establishing the corner positions and monumentation found or placed.)

Monument Description and Remarks: W 1/4 CORNER SECTION 25 T97N R11W: Set 1/2" ϕ rebar w/2" ϕ aluminum cap PLS 15525 on the extension of the possession line from the East at the centerline of Windsor Avenue.

CENTER OF SECTION 25 T97N R11W: Set 1/2" ϕ rebar w/2" ϕ aluminum cap PLS 15525 at the intersection of the 1/4 Section Lines.

PLAN - VIEW

(Show a minimum of three reference ties to durable physical objects, relevant monuments and physical conditions that will enable recovery of the corner.)



I hereby certify that this land surveying document was prepared and the related survey work was performed by me or under my direct personal supervision and that I am a duly licensed Land Surveyor under the laws of the State of Iowa.

Paul R. Herold 4-4-06
Paul R Herold Date
License number 15525
My license renewal date is December 31, 2008.
Sheets covered by this seal: Individual

List Corners to be Indexed			
Corners	Section	Twp.	Range
W 1/4	25	97N	11W
Center	25	97N	11W

X:\Section Corners\Sec. 25\25-97-11km.dwg
Project Number 08078.LS
FB. 48L PG. 68-69