

Chickasaw Co. Recorder
 Cindy Messersmith
Fee Book 2016-1343
 10/05/2016 @ 03:09 PM
 SEC SEC COR CERT
 Book Page: # Pages: 1
 Total Fees: \$7.00

prepared by & Return to: Herald - Reicks Surveying, 10 East Main Street, New Hampton, IA 50659, Ph. 641-394-2725

UNITED STATES PUBLIC LAND SURVEY CORNER CERTIFICATE

Land Survey Monuments situated in Section **23**, Township **97** North, Range **11** West of the Fifth Principal Meridian, **Chickasaw** County, Iowa. **1., 2.)** Previously not recorded in the County Recorder's office.

This certificate is being prepared in compliance with Iowa Code Chapter 355.11 because:

1 & 2 There is no certificate on file for this corner.
 There are no longer three valid ties of record.
 There are changes to reference ties of record.
 There is change of monumentation of record.
 To clarify description of record monument (ties).

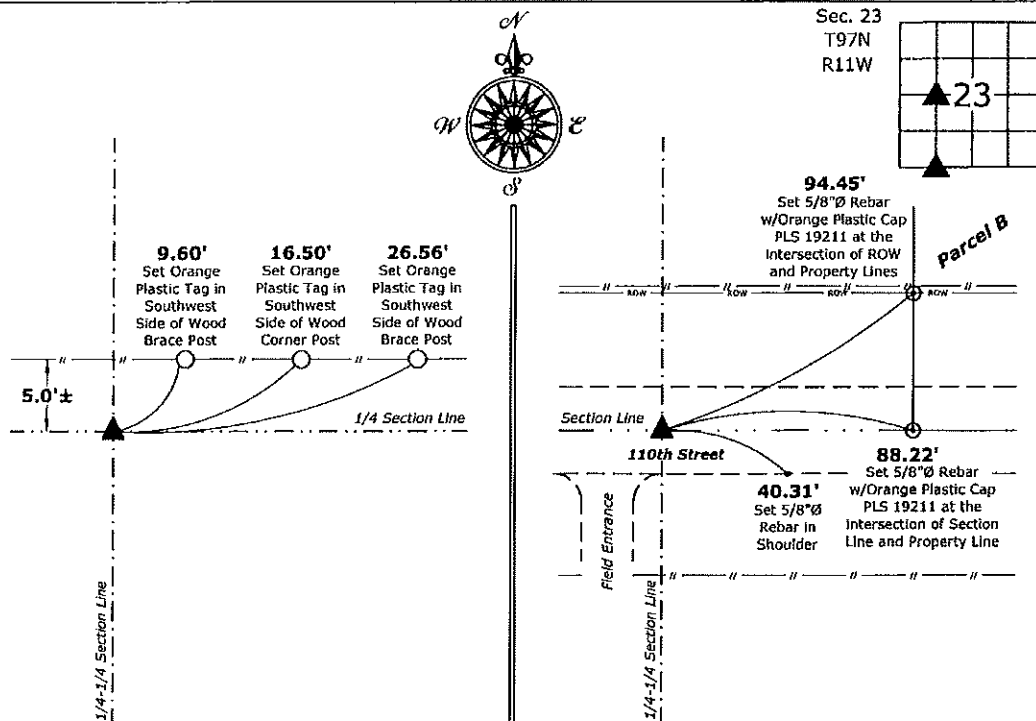
Monument Description and Remarks:

1.) Northwest Corner NE 1/4-SW 1/4: Set 5/8"Ø rebar w/2"Ø aluminum cap PLS 19211 equidistant and on line between the West 1/4 Corner and Center of said Section.

2.) Southwest Corner SE 1/4-SW 1/4: Set 5/8"Ø rebar w/2"Ø aluminum cap PLS 19211 equidistant and on line between the South 1/4 Corner and Southwest Corner of said Section.

PLAN - VIEW

(Show a minimum of three reference ties to durable physical objects, relevant monuments and physical conditions that will enable recovery of the corner.)



Cor. P, Sec. 23-97-11

Cor. E, Sec 26-97-11

1.) Northwest Corner NE 1/4-SW 1/4 Section 23-97-11
 Set 5/8"Ø rebar w/2"Ø aluminum cap PLS 19211

2.) Southwest Corner SE 1/4-SW 1/4 Section 23-97-11
 Set 5/8"Ø rebar w/2"Ø aluminum cap PLS 19211



I hereby certify that this land surveying document was prepared and the related survey work was performed by me or under my direct personal supervision and that I am a duly licensed Land Surveyor under the laws of the State of Iowa.
Kirk D. Reicks 10-5-16
 Kirk D. Reicks Date:
 License number 19211
 My license renewal date is December 31, 2016.
 Sheets covered by this seal: Individual sheet only

List Corners to be Indexed

Corners	Section	Twp.	Range
NW-NE-SW	23	97	11
SW-SE-SW	23	97	11

Project Number: 2016-114

FB: Chickasaw County 8, Pgs. 7-9

File: S:_C3D Projects\County Control Systems\CHICKASAW\CHICK-8.dwg, 10/5/2016 7:11:37 AM