

See #700
2004 JUL 9 AM 8 42

CINDY MESSERSMITH
COUNTY RECORDER

Corner A:
Section 23-97-11
As referred to in
Engg. The Book

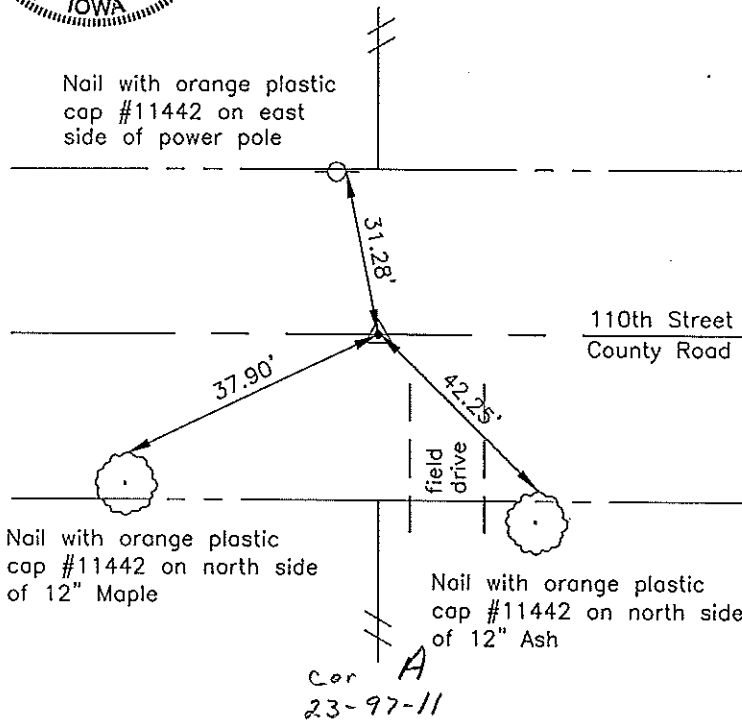
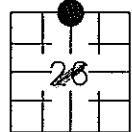
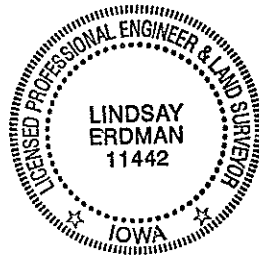
Prepared by: Erdman Engineering, P.C., 708 Commerce Drive, P.O. Box 246, Decorah, Iowa 52101 (563) 382-4194

United States Public Land Survey Corner Certificate
of 23

Land Survey Monuments situated in Section 26, Township 97, Range 11 West of the 5th Principal Meridian in Chickasaw County, Iowa. Previously recorded in does not apply in the county Recorder's Office.

Monument Description and Remarks: This certificate is prepared in accordance with Section 193C of the Code of Iowa. No previous certificate has been filed for this corner location. Based on the Plat of Survey recorded in Book 133 page 370 in the Chickasaw County Recorder's Office we found a steel pipe with a 1" diameter aluminum cap #2886 that matches the description of the monument set previously at the center of the 66' wide county road right-of-way and in line with the fence line running south as the N 1/4 Corner of Section 26, Township 97 North, Range 11 West.

Plan-View



I hereby certify that the survey work was completed and this certificate was prepared by me or under my direct supervision and that I am a duly registered land surveyor under the laws of the State of Iowa.

Signature [Signature]
Lindsay Erdman, P.E. and P.L.S. Iowa License Number 11442

Date: 7/2/04

My license renewal date is December 31, 2004

Corner(s) to be Indexed

Corner	Section	Township	Range
N 1/4	26	97	11