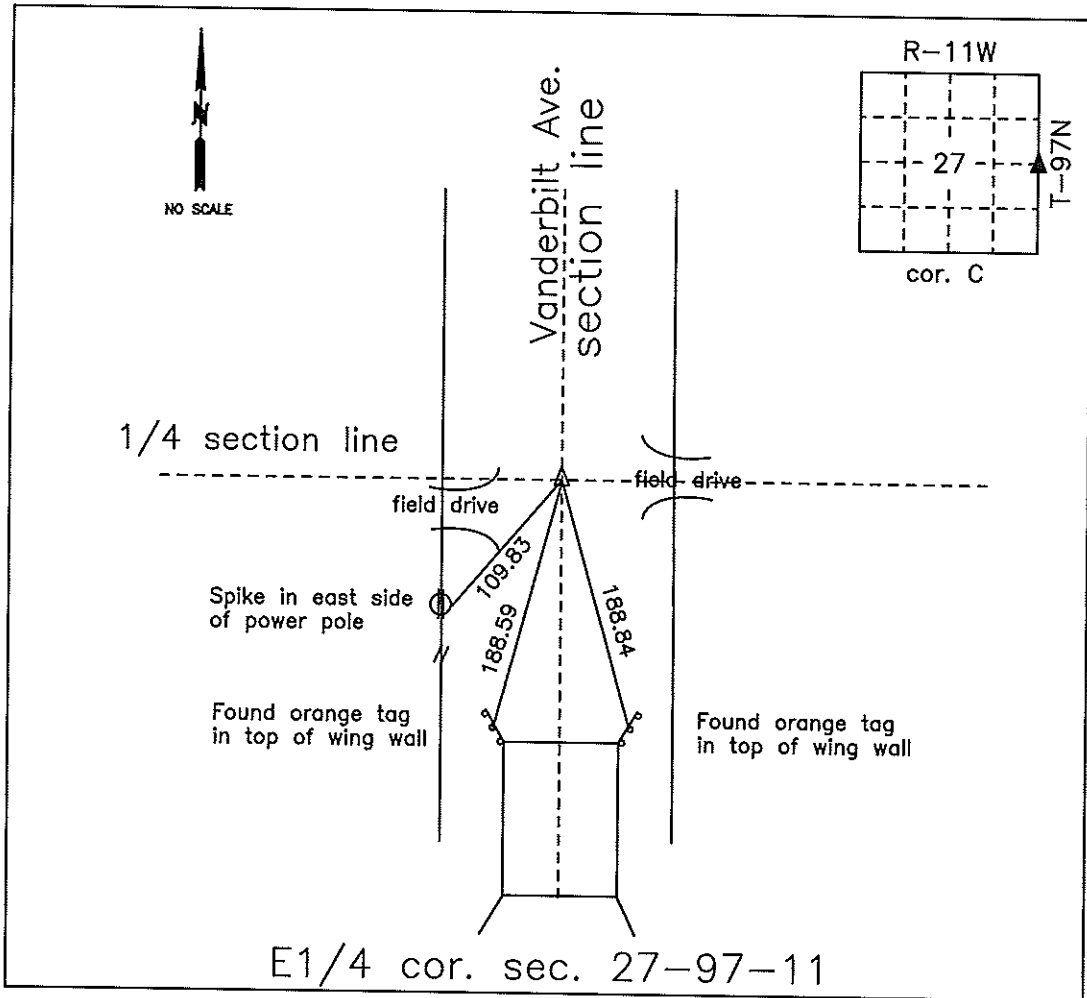


# COUNTY ENGINEER'S SECTION CORNER PRESERVATION RECORD

LAND SURVEY MONUMENT LOCATED IN SECTION 27, TOWNSHIP 97 N  
NORTH, RANGE 11 W, OF THE 5TH P.M. CHICKASAW COUNTY, IOWA  
PREVIOUSLY RECORDED FILE 2002-0361



**MONUMENT DESCRIPTION AND NARRATIVE** Found iron pin in center of road in line with road north/south from county engineer ties. 1 ties were missing. Used spike in power pole on north side of bridge.

All ties are GPS surveyed.

I AM NOT A REGISTERED LAND SURVEYOR UNDER THE LAWS OF THE STATE OF IOWA

JIM FOSTER CHICKASAW CO. DATE: 11/14/13

*Harold - Reicks Surveying, 10 East Main Street, New Hampton, IA 50659, Ph. 641-394-2725, Fax. 641-394-2718*

### UNITED STATES PUBLIC LAND SURVEY CORNER CERTIFICATE

Land Survey Monuments situated in Section 27, Township 97 North, Range 11 West of the Fifth Principal Meridian, Chickasaw County, Iowa. Not previously recorded in the County Recorder's office.

This certificate is being prepared in compliance with Iowa Code Chapter 355.11 because:

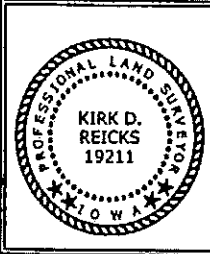
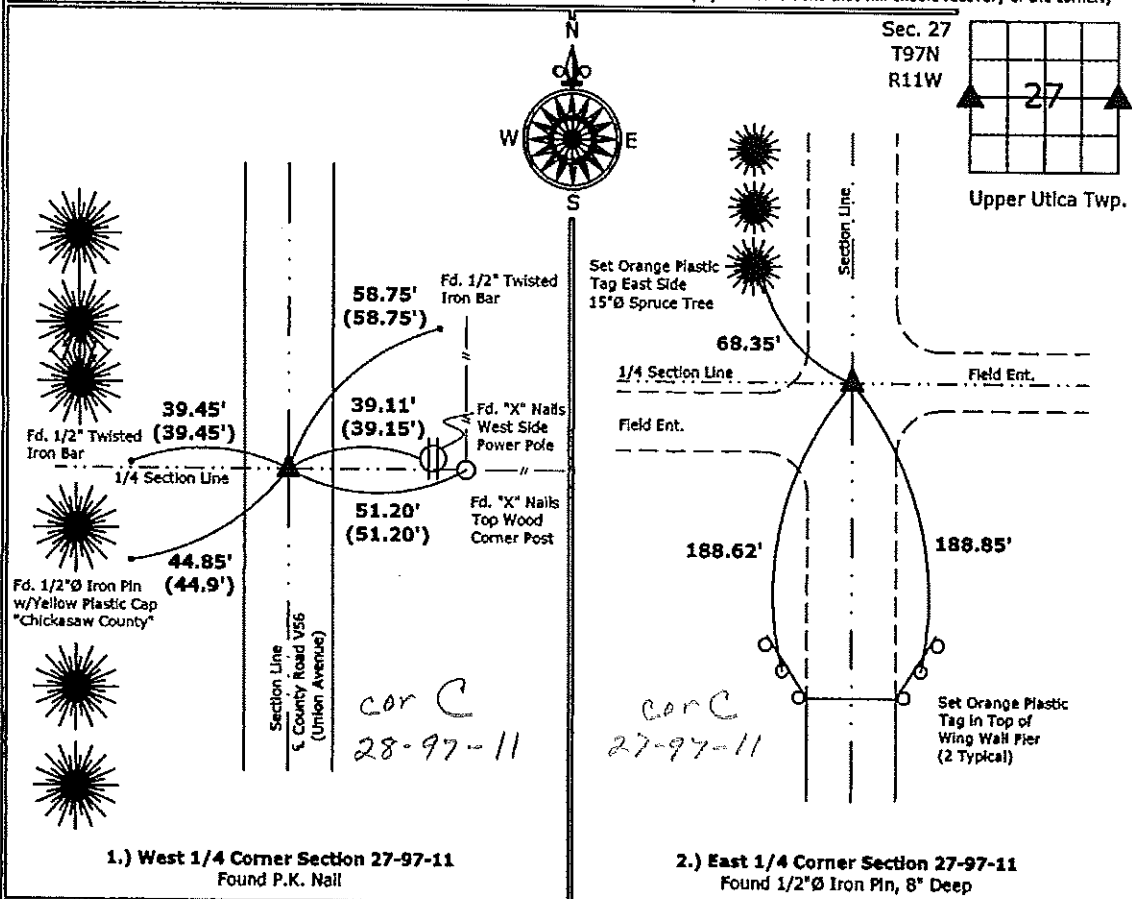
- 1.) & 2.)  There is no certificate on file for this corner.  
 There are no longer three valid ties of record.  
 There are changes to reference ties of record.  
 There is change of monumentation of record.  
 To clarify description of record monument (ties).

Monument Description and Remarks:

- 1.) **West 1/4 Corner:** Found PK nail with information obtained from the County Engineer's office.  
 2.) **East 1/4 Corner:** Found 1/2"Ø Iron Pin, 8" deep with information obtained from the County Engineer's office.

### PLAN - VIEW

(Show a minimum of three reference ties to durable physical objects, relevant monuments and physical conditions that will enable recovery of the corner.)



I hereby certify that this land surveying document was prepared and the related survey work was performed by me or under my direct personal supervision and that I am a duly licensed Land Surveyor under the laws of the State of Iowa.  
*Kirk D. Reicks* 3-11-10  
 Kirk D. Reicks Date:  
 License number 19211  
 My license renewal date is December 31, 2010.  
 Sheets covered by this seal: Individual sheet only

List Corners to be Indexed			
Corners	Section	Twp.	Range
W 1/4	27	97	11
E 1/4	27	97	11

Project Number: 2010-022  
 F8: Chickasaw County 1, Pgs. ???

File: S:\Projects\2010\2010-022\dwg\2010-022.dwg, 3/10/2010 1:58:44 PM

XX DOCUMENT No. **02590** FILED FOR RECORD THE 19th DAY OF June, 1998 AT 8:30 P.M. STATE OF IOWA, CHICKASAW COUNTY:  
 RECORDING FEE \$ 6.00 O'CLOCK A.M. BOOK 168 Deeds PAGE 28 By Lindsay Erdman Recorder  
 TRANSFER FEE \$ --- LEITHA H. ROSS Deputy

Prepared by: Erdman Engineering P.C. 708 Commerce Drive, P.O. Box 246, Decorah Iowa, 52101  
 Phone (319)382-4194, Fax (319)382-3623

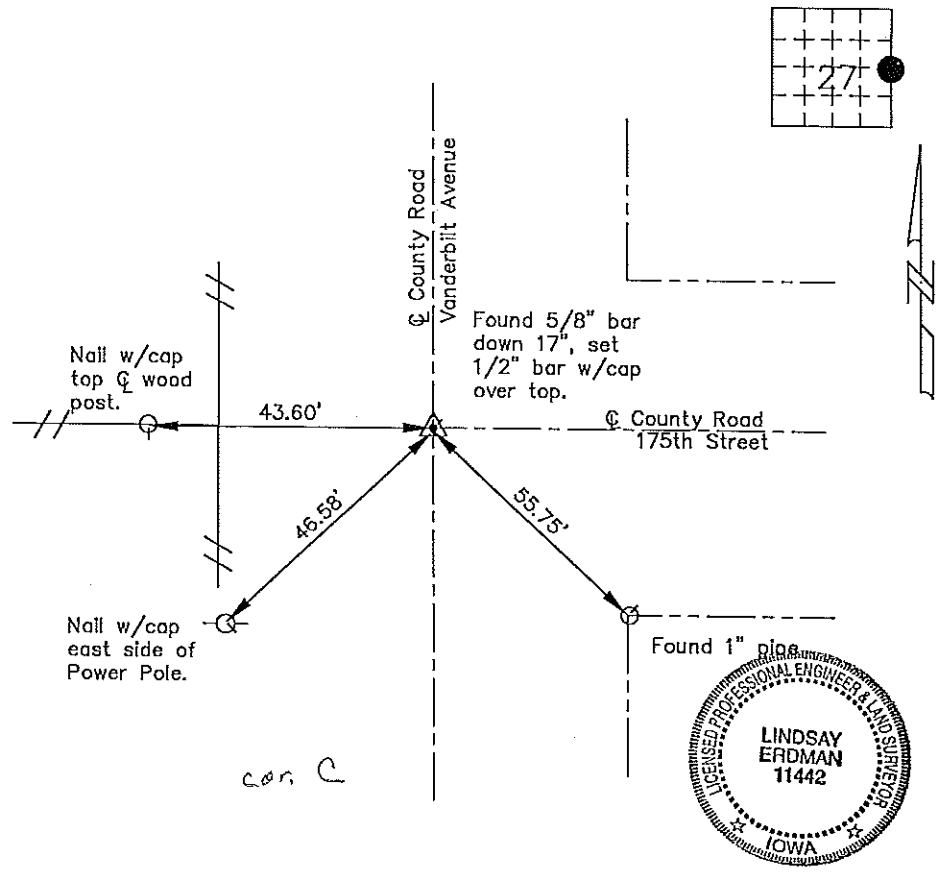
### United States Public Land Survey Corner Certificate of

Land Survey Monuments situated in Section, 27 Township, 97 Range, 11 of the Fifth Principle Meridian, Chickasaw County, Iowa. Previously recorded in does not apply County Recorders Office.

(Show reason for preparing this certificate, the evidence and detailed procedures used in establishing the corner positions and monumentation found or placed.)

Monument Description and Remarks: This certificate is prepared in accordance with Section 355.11 of the 1995 Code of Iowa. No previous certificate has been filed for this corner location. Based on Chickasaw County Engineer's reference ties we found a 1" pipe used as a tie marker. From this tie we found a 5/8" bar down 17" below the existing crushed rock surface of the county road at the E 1/4 Corner of Section 27-197N-R11W. We set a 1/2" bar w/cap Iowa RLS #11442 over the top of the bar.

Plan-View  
(Show a minimum of three reference ties to durable physical objects, relevant monuments and physical conditions that will enable recovery of the corner.)



I hereby certify that the survey work was completed and this certificate was prepared by me or under my direct supervision and that I am a duly registered land surveyor under the laws of the State of Iowa.

Signature: Lindsay Erdman  
 Lindsay Erdman, P.E. and L.S.  
 Date: 6/15/98 Reg. No. 11442

My license renewal date is December 31, 1998

Corners	List Corners to be Indexed		
	Section	Twp.	Range
E 1/4	27	97	11

m:\c:\vapor\act\chick\88068\88068.d