

Corner B:  
 Section 22-97-11  
 As referred to in  
 Engg. T.C. Book

FILED 2004 - 1592

RECORDER'S OFFICE  
 CHICKASAW COUNTY, IOWA

See # 700  
 2004 JUL 9 AM 8 42

CINDY MESSERSMITH  
 COUNTY RECORDER

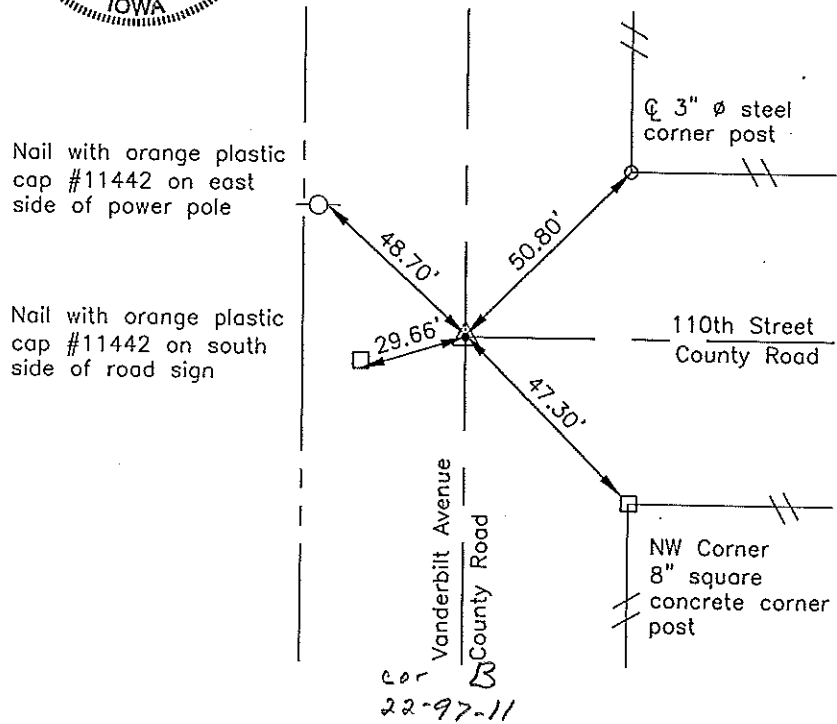
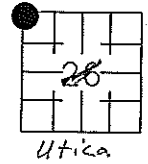
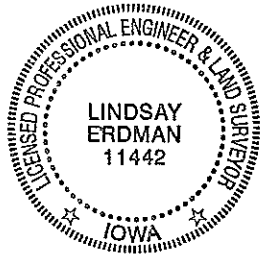
Prepared by: Erdman Engineering, P.C., 708 Commerce Drive, P.O. Box 246, Decorah, Iowa 52101 (563) 382-4194

United States Public Land Survey Corner Certificate

of 22  
 Land Survey Monuments situated in Section 26, Township 97, Range 11 West of the 5th Principal Meridian in Chickasaw County, Iowa. Previously recorded in does not apply in the county Recorder's Office.

Monument Description and Remarks: This certificate is prepared in accordance with Section 193C of the Code of Iowa. No previous certificate has been filed for this corner location. Based on Chickasaw County we searched for the tie markers that had been previously set. We did not find any as they appear to have been removed when ROW fences were replaced. County Engineer's Reference Ties show that a stone had been found and an iron pin had been placed. Last reference is in 1928. We found a 5/8" diameter twisted steel bar at the approximate centerline-centerline intersection of the county roads that matches the description of the monument used previously on the Plat of Survey recorded in Book 133 page 370 in the Chickasaw County Recorder's Office. Based on this we used the bar as the NW Corner of Section 26, Township 97 North, Range 11 West.

Plan-View



I hereby certify that the survey work was completed and this certificate was prepared by me or under my direct supervision and that I am a duly registered land surveyor under the laws of the State of Iowa.

Signature: *Lindsay Erdman*  
 Lindsay Erdman, P.E. and P.L.S., Iowa License Number 11442

Date: 7/2/04

My license renewal date is December 31, 2004

Corner(s) to be Indexed

Corner	Section	Township	Range
NW	26	97	11