

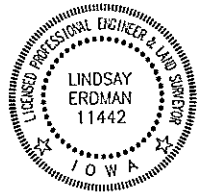
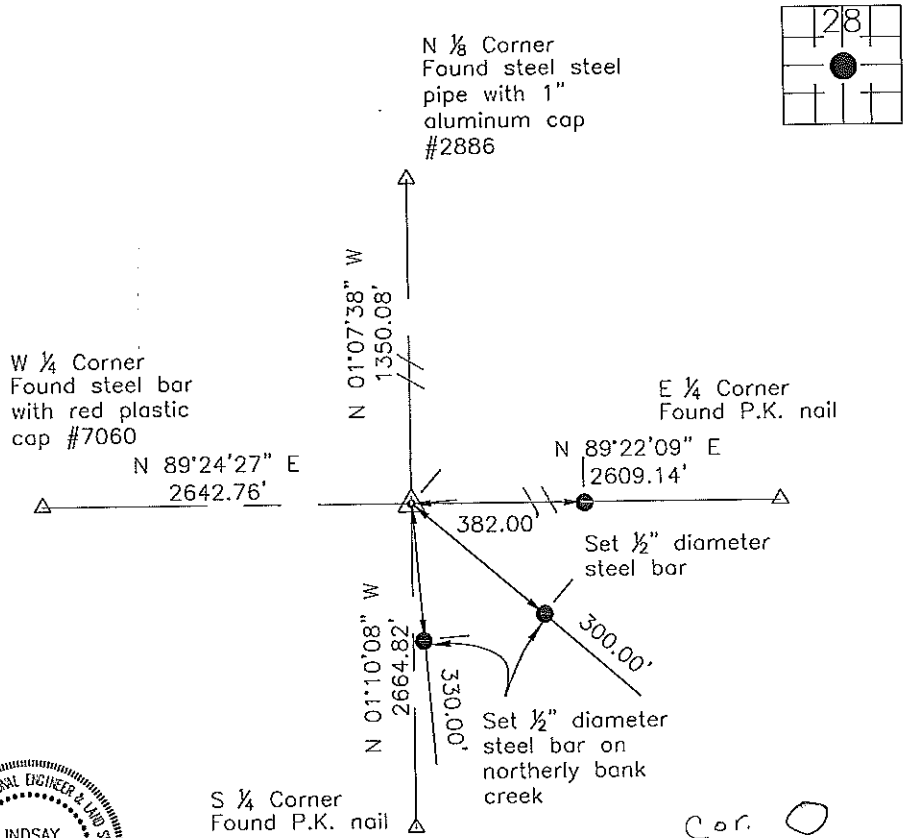
Prepared by: Erdman Engineering, P.C., 708 Commerce Drive, P.O. Box 246, Decorah, Iowa 52101 (563) 382-4194

United States Public Land Survey Corner Certificate
 of

Land Survey Monuments situated in Section 28, Township 97, Range 11 West of the 5th Principal Meridian in Chickasaw County, Iowa. Previously recorded in does not apply in the county Recorder's Office.

Monument Description and Remarks: This certificate is prepared in accordance with Section 355.11 of the Code of Iowa. No previous certificate has been filed for this corner location. We found no record of the Center Section being set. We found no evidence of a monument in the field other than an existing fence corner with fence lines running north and east. We found the N 1/4 Corner, S 1/4 Corner, W 1/4 Corner and E 1/4 Corner. We computed the location of the Center Section at the theoretical location (N 1/4 - S 1/4 and W 1/4 - E 1/4). This location was ±24' north and ±2.5' east of the fence corner. We used the fence corner as the Center of Section 28, Township 97 North, Range 11 West and set a 1/2" diameter steel bar with 1 1/2" aluminum cap on the southwest side of the post.

Plan-View



Cor. O
 28-97-11

I hereby certify that this land surveying document was prepared and the related survey work was performed by me or under my direct personal supervision and that I am a duly licensed Land Surveyor under the laws of the State of Iowa.

Signature: Lindsay Erdman
 Lindsay Erdman, P.E. and P.L.S. Iowa License Number 11442

Date: 1/11/13

My license renewal date is December 31, 2014

Corner(s) to be Indexed

Corner	Section	Township	Range
C.S.	28	97	11