

Prepared by & Return to: Herold - Reicks Surveying, 10 East Main Street, New Hampton, IA 50659, Ph. 641-394-2725

United States Public Land Survey Corner Certificate

Land Survey Monument situated in
 Section 27, Township 97 North, Range 11 West of the Fifth Principal Meridian, Chickasaw County, Iowa.
 On file in Document #2010-0361 in the County Recorder's office.

This certificate is being prepared in compliance with Iowa Code Chapter 355.11 because:

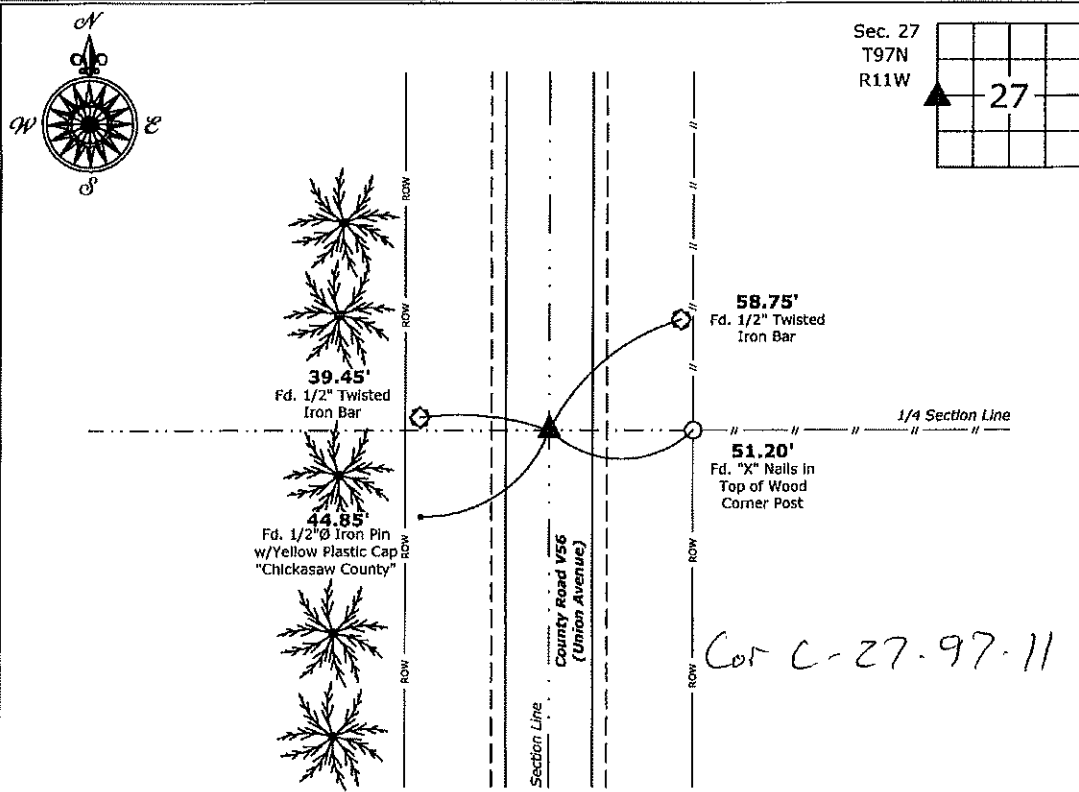
- There is no certificate on file for this corner.
- There are no longer three valid ties of record.
- There are changes to reference ties of record.
- There is change of monumentation of record.
- To clarify description of record monument (ties).

Monument Description and Remarks:

West 1/4 Corner: Set 1"Ø Bronze Survey Marker PLS 19211 at previous location (Found PK Nail) with coordinates of the Corner obtained prior to highway reconstruction, Project No. FM-C019(89)--55-19.

Plan View

(Show a minimum of three reference ties to durable physical objects, relevant monuments and physical conditions that will enable recovery of the corner.)



West 1/4 Corner of Section 27-97-11
 Set 1"Ø Bronze Survey Marker PLS 19211



I hereby certify that this land surveying document was prepared and the related survey work was performed by me or under my direct personal supervision and that I am a duly licensed Land Surveyor under the laws of the State of Iowa.
Kirk D. Reicks 6-17-20
 Kirk D. Reicks Date:
 License number 19211
 My license renewal date is December 31, 2020.
 Sheets covered by this seal: Individual sheet only

| List Corner to be Indexed | | | |
|-----------------------------------|---------|------|-------|
| Corner | Section | Twp. | Range |
| W 1/4 | 27 | 97 | 11 |
| Project Number: 2019-810 | | | |
| FB: 2019 Construction, Pgs. 14-36 | | | |

File: S:_Projects - NHO\County Control Systems - NHO\CHICKASAW\CHICK-7 - 2020.dwg, 6/16/2020 11:13:33 AM

Harold - Reicks Surveying, 10 East Main Street, New Hampton, IA 50659, Ph. 641-394-2725, Fax. 641-394-2718

UNITED STATES PUBLIC LAND SURVEY CORNER CERTIFICATE

Land Survey Monuments situated in Section 27, Township 97 North, Range 11 West of the Fifth Principal Meridian, Chickasaw County, Iowa. Not previously recorded in the County Recorder's office.

This certificate is being prepared in compliance with Iowa Code Chapter 355.11 because:

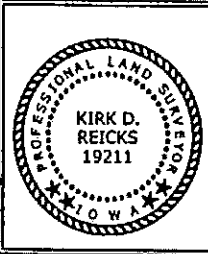
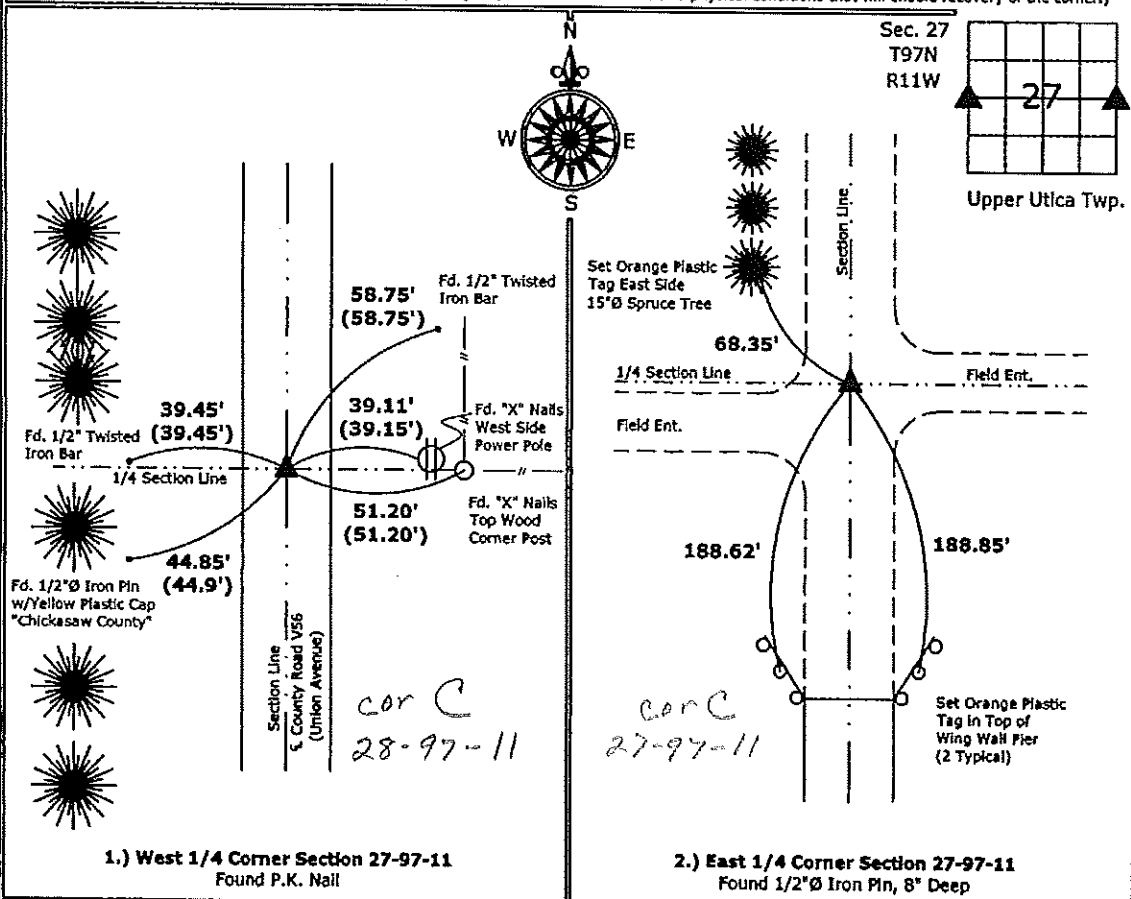
- 1.) & 2.) There is no certificate on file for this corner.
 There are no longer three valid ties of record.
 There are changes to reference ties of record.
 There is change of monumentation of record.
 To clarify description of record monument (ties).

Monument Description and Remarks:

- 1.) **West 1/4 Corner:** Found PK nail with information obtained from the County Engineer's office.
 2.) **East 1/4 Corner:** Found 1/2"Ø Iron Pin, 8" deep with information obtained from the County Engineer's office.

PLAN - VIEW

(Show a minimum of three reference ties to durable physical objects, relevant monuments and physical conditions that will enable recovery of the corner.)



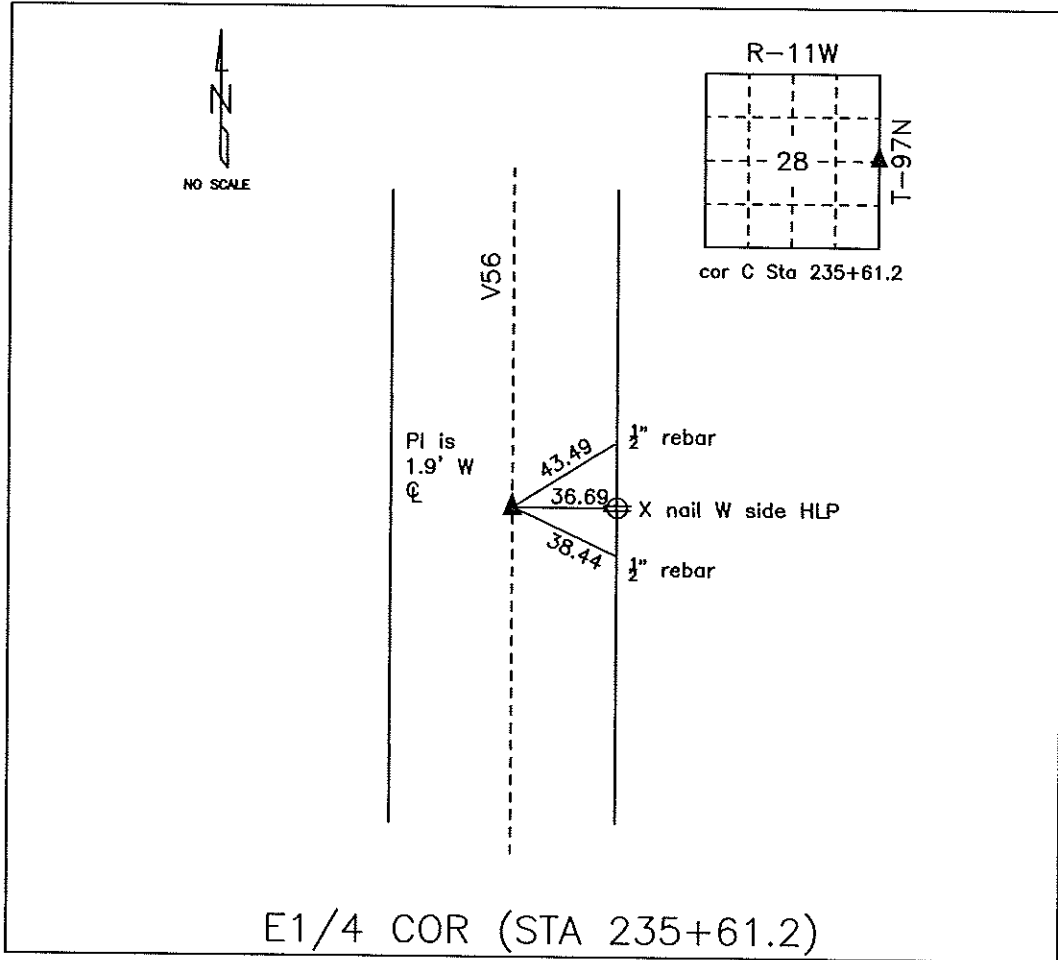
I hereby certify that this land surveying document was prepared and the related survey work was performed by me or under my direct personal supervision and that I am a duly licensed Land Surveyor under the laws of the State of Iowa.
Kirk D. Reicks 3-11-10
 Kirk D. Reicks Date:
 License number 19211
 My license renewal date is December 31, 2010.
 Sheets covered by this seal: Individual sheet only

| List Corners to be Indexed | | | |
|----------------------------|---------|------|-------|
| Corners | Section | Twp. | Range |
| W 1/4 | 27 | 97 | 11 |
| E 1/4 | 27 | 97 | 11 |

Project Number: 2010-022
 F8: Chickasaw County 1, Pgs. ???

COUNTY ENGINEER'S SECTION CORNER PRESERVATION RECORD

LAND SURVEY MONUMENT LOCATED IN SECTION 28, TOWNSHIP 97 N
NORTH, RANGE 11 W, OF THE 5TH P.M. Chickasaw COUNTY, IOWA
PREVIOUSLY RECORDED NONE



MONUMENT DESCRIPTION AND NARRATIVE Found PK nail in HMA mat

From Chickasaw County Project plans SN-188(9) found PI is 1.9' west of center line. Information was also found in the county engineer tie book.

All ties are GPS surveyed.

I AM NOT A REGISTERED LAND SURVEYOR UNDER THE LAWS OF THE STATE OF IOWA

JIM FOSTER CHICKASAW CO. DATE: 08/03/10