

Instrument #: 2018-1007  
 06/12/2018 09:46:06 AM Total Pages: 1  
 SCC SECTION CORNER CERTIFICATES  
 Recording Fee: \$ 7.00  
 Cindy Messersmith, Recorder, Chickasaw County Iowa



MOHN SURVEYING INC. ROGER R. MOHN 1890 GREAT RIVER ROAD LANSING, IOWA 52151 (563) 538-4067

TIES, DWG M. Natvig

SLSI 9-90

UNITED STATES PUBLIC LAND SURVEY CORNER CERTIFICATE

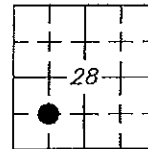
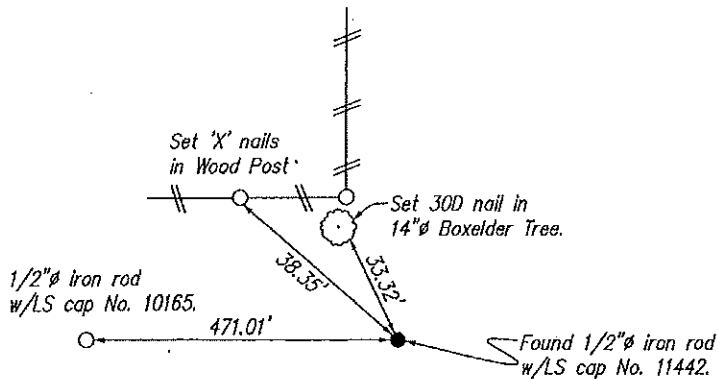
OF  
 Land Survey Monuments situated in Section 28, Township 97 North, Range  
11 West, of the Fifth Principal Meridian, Chickasaw County, Iowa.  
 Previously recorded in Book 2013-0092 in County Recorder's Office.  
 (book, page, document number, etc.)

(Show reason for preparing this certificate, the evidence and detailed procedures used in establishing the corner positions and monumentation found or placed.)

Monument Description and Remarks: Found 1/2" iron rod w/LS cap No. 11442 according to a plat of survey that is recorded in Book 2012-0092 of Chickasaw County Records. Previous accessories are gone. Set new accessories.

PLAN - VIEW

(Show a minimum of three reference ties to durable physical objects, relevant monuments and physical conditions that will enable recovery of the corner.)

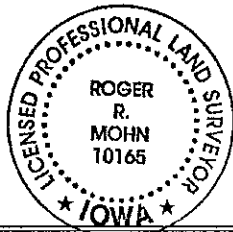


Cor. I  
 28-97-11

I hereby certify that this land surveying document was prepared by me or under my direct personal supervision and that I am a duly Registered Land Surveyor under the laws of the state of Iowa.

Roger R. Mohn 6/8, 2018  
 ROGER R. MOHN, P.E. & L.S. Iowa Registration No. 10165  
 My registration expires December 31, 2018

SEAL



Corners	List Corners to be Indexed Section	Twp	Range
SE Cor. of NW1/4-SW1/4	28	97N	11W

Chickasaw Co. Recorder  
 Cindy Messersmith  
**Fee Book 2013-0092**  
 01/14/2013 @0257PM  
 SCC: SEC COR CERT  
 Book: Page: # Pages: 1  
 Total Fees: \$7.00

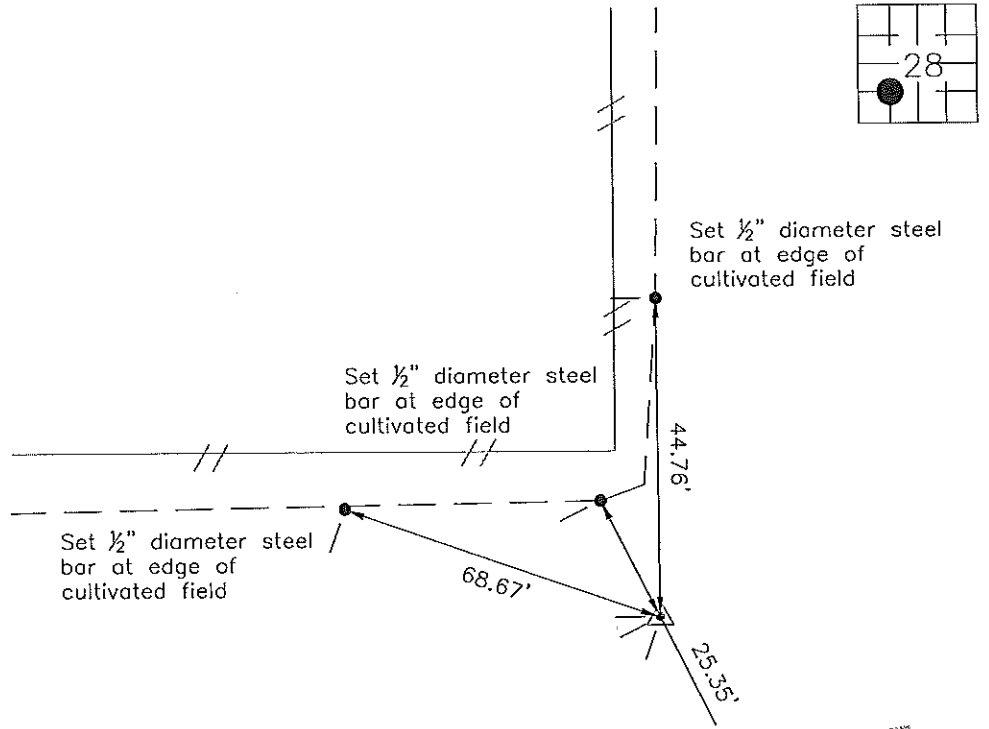
Prepared by: Erdman Engineering, P.C., 708 Commerce Drive, P.O. Box 246, Decorah, Iowa 52101 (563) 382-4194

United States Public Land Survey Corner Certificate  
 of

Land Survey Monuments situated in Section 28, Township 97, Range 11 West of the 5th Principal Meridian in Chickasaw County, Iowa. Previously recorded in does not apply in the county Recorder's Office.

Monument Description and Remarks: This certificate is prepared in accordance with Section 355.11 of the Code of Iowa. No previous certificate has been filed for this corner location. We found no record of the SW 1/6 Corner being set. We found no evidence of a monument in the field other than an existing fence corner with fence lines running north and west. We found the SW Corner, S 1/4 Corner and W 1/4 Corner. We set the Center Section. We set a 1/2" diameter steel bar with 1 1/2" aluminum cap #11442 at the intersection of the lines from the midpoints of the four sides of the Southwest Quarter as the SW 1/6 Corner of Section 28, Township 97 North, Range 11 West. The monument is located in a cultivated field. We set the top of the monument down ±1' below the existing ground.

Plan-View



Cor. I  
 28-97-11



I hereby certify that this land surveying document was prepared and the related survey work was performed by me or under my direct personal supervision and that I am a duly licensed Land Surveyor under the laws of the State of Iowa.

Signature Lindsay Erdman  
 Lindsay Erdman, P.E. and P.L.S. Iowa License Number 11442

Date: 1/11/13

My license renewal date is December 31, 2014

Corner(s) to be Indexed

Corner	Section	Township	Range
SW 1/16	28	97	11