

Chickasaw Co. Recorder
 Cindy Messersmith
Fee Book 2013-0091
 01/14/2013 @ 02:56 PM
 SCC: SEC COR CERT
 Book: Page: # Pages: 1
 Total Fees: \$7.00

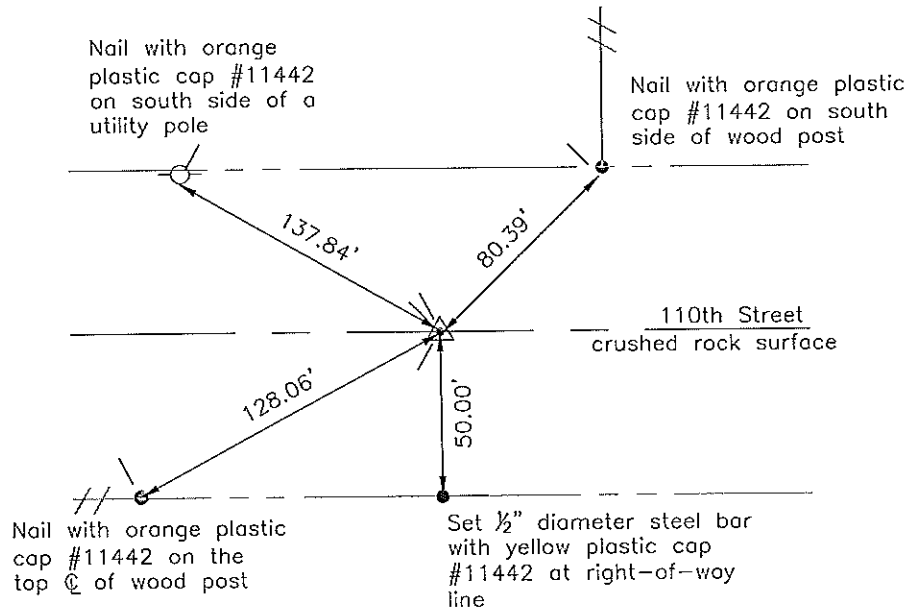
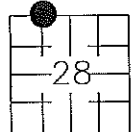
Prepared by: Erdman Engineering, P.C., 708 Commerce Drive, P.O. Box 246, Decorah, Iowa 52101 (563) 382-4194

United States Public Land Survey Corner Certificate
 of

Land Survey Monuments situated in Section 28, Township 97, Range 11 West of
 the 5th Principal Meridian in Chickasaw County, Iowa. Previously recorded in
does not apply in the county Recorder's Office.

Monument Description and Remarks: This certificate is prepared in accordance with
 Section 355.11 of the Code of Iowa. No previous certificate has been filed for this
 corner location. We found no record of the NNW 1/8 Corner being set. We found a steel
 pipe with 1" diameter aluminum cap #2886 at the approximate centerline of the county
 road and midway between the NW Corner and N 1/4 Corner. We used the monument as
 the NNW 1/8 Corner of Section 28, Township 97 North, Range 11 West.

Plan-View



Cor E1
 28-97-11

I hereby certify that this land surveying document
 was prepared and the related survey work was
 performed by me or under my direct personal
 supervision and that I am a duly licensed Land
 Surveyor under the laws of the State of Iowa.

Signature: Lindsay Erdman
 Lindsay Erdman, P.E. and P.L.S., Iowa License Number 11442

Date: 1/11/13

My license renewal date is December 31, 2014

Corner(s) to be Indexed

Corner	Section	Township	Range
NNW 1/8	28	97	11