

Prepared by & Return to: Herald - Reicks Surveying, 10 East Main Street, New Hampton, IA 50559, Ph. 641-354-2725

United States Public Land Survey Corner Certificate

Land Survey Monument situated in
 Section 28, Township 97 North, Range 11 West of the Fifth Principal Meridian, Chickasaw County, Iowa.
 On file in Document #2013-0090 in the County Recorder's office.

This certificate is being prepared in compliance with Iowa Code Chapter 355.11 because:

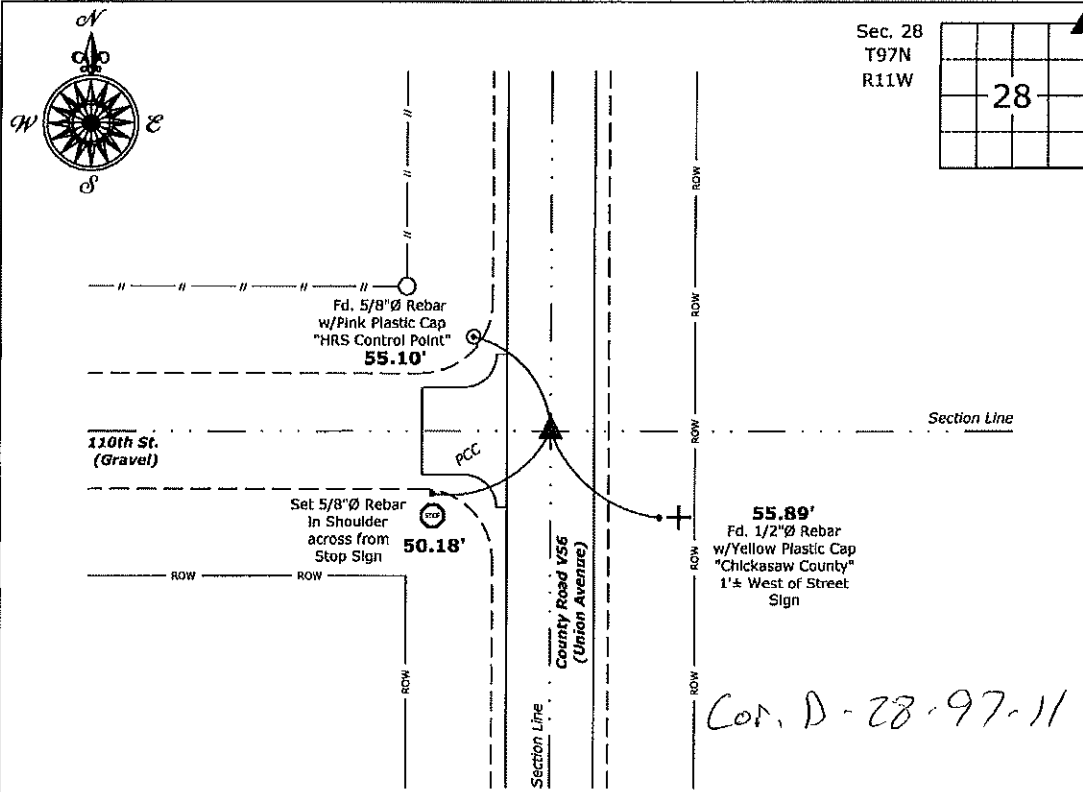
- There is no certificate on file for this corner.
- There are no longer three valid ties of record.
- There are changes to reference ties of record.
- There is change of monumentation of record.
- To clarify description of record monument (ties).

Monument Description and Remarks:

Northeast Corner: Set 1"Ø Bronze Survey Marker PLS 19211 at previous location (Found PK Nail) with coordinates of the Corner obtained prior to highway reconstruction, Project No. FM-C019(89)--55-19.

Plan View

(Show a minimum of three reference ties to durable physical objects, relevant monuments and physical conditions that will enable recovery of the corner.)



Northeast Corner of Section 28-97-11
 Set 1"Ø Bronze Survey Marker PLS 19211

Cor. D-28-97-11



I hereby certify that this land surveying document was prepared and the related survey work was performed by me or under my direct personal supervision and that I am a duly licensed Land Surveyor under the laws of the State of Iowa.
Kirk D. Reicks 6-17-20
 Kirk D. Reicks Date:
 License number 19211
 My license renewal date is December 31, 2020.
 Sheets covered by this seal: Individual sheet only

List Corner to be Indexed			
Corner	Section	Twp.	Range
NE	28	97	11
Project Number: 2019-810			
FB: 2019 Construction, Pgs. 14-36			

File: S:\Projects - NHO\CHICKASAW\CHICK-7\CHICK-7 - 2020.dwg, 6/16/2020 11:13:47 AM

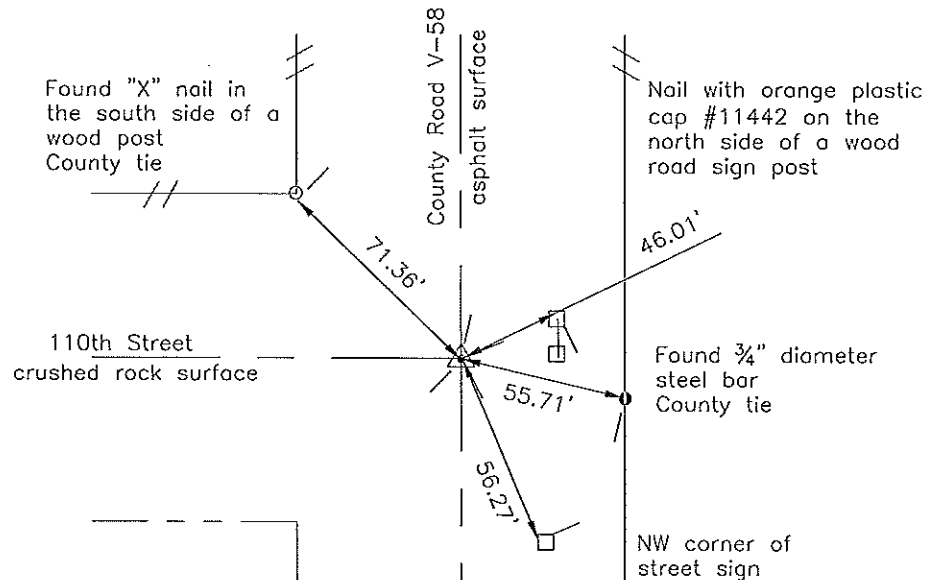
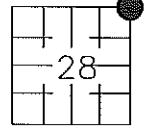
Prepared by: Erdman Engineering, P.C., 708 Commerce Drive, P.O. Box 246, Decorah, Iowa 52101 (563) 382-4194

United States Public Land Survey Corner Certificate
 of

Land Survey Monuments situated in Section 28, Township 97, Range 11 West of the 5th Principal Meridian in Chickasaw County, Iowa. Previously recorded in does not apply in the county Recorder's Office.

Monument Description and Remarks: This certificate is prepared in accordance with Section 355.11 of the Code of Iowa. No previous certificate has been filed for this corner location. Based on Chickasaw County Engineer's Reference Ties we found a set of "X" nails and a steel bar with had been used previously as tie markers. From these ties we found a P.K. nail at the approximate centerline-centerline intersection of the county roads that matches the description of the monument used previously as the NE Corner of Section 28, Township 97 North, Range 11 West.

Plan-View



cor B
 21-97-11

I hereby certify that this land surveying document was prepared and the related survey work was performed by me or under my direct personal supervision and that I am a duly licensed Land Surveyor under the laws of the State of Iowa.

Signature: Lindsay Erdman
 Lindsay Erdman, P.E. and P.L.S. Iowa License Number 11442

Date: 1/11/13

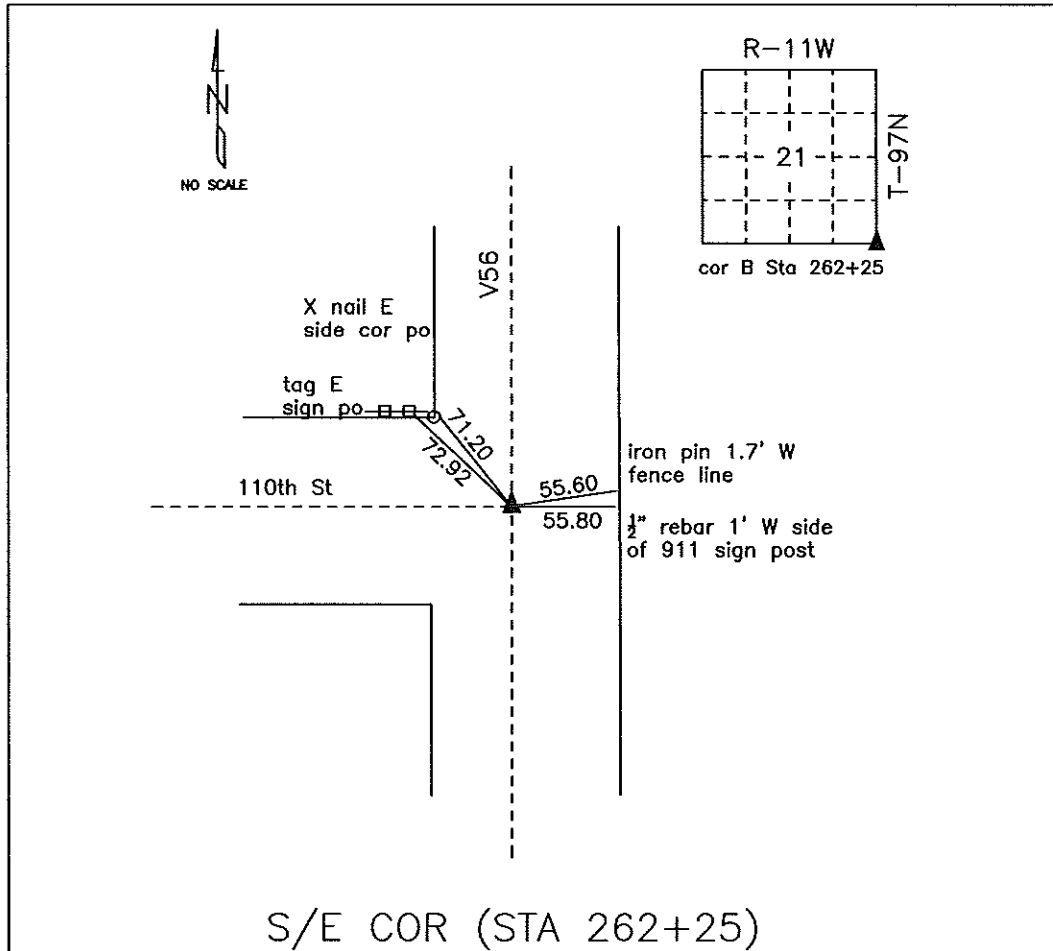
My license renewal date is December 31, 2014

Corner(s) to be Indexed

Corner	Section	Township	Range
NE	28	97	11

COUNTY ENGINEER'S SECTION CORNER PRESERVATION RECORD

LAND SURVEY MONUMENT LOCATED IN SECTION 21, TOWNSHIP 97 N
NORTH, RANGE 11 W, OF THE 5TH P.M. Chickasaw COUNTY, IOWA
PREVIOUSLY RECORDED NONE



MONUMENT DESCRIPTION AND NARRATIVE Found PK nail in HMA mat

From Chickasaw County Project plans SN-188(9) found PI on center line. Information was also found
in the county engineer tie book.

All ties are GPS surveyed.

I AM NOT A REGISTERED LAND SURVEYOR UNDER THE LAWS OF THE STATE OF IOWA

JIM FOSTER CHICKASAW CO. DATE: 08/03/10