



MOHN SURVEYING INC. ROGER R. MOHN 1890 GREAT RIVER ROAD LANSING, IOWA 52151 (563) 538-4067

TIES. DWG M. Natvig

SLSI 9-90

UNITED STATES PUBLIC LAND SURVEY CORNER CERTIFICATE

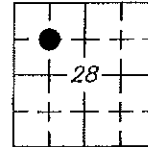
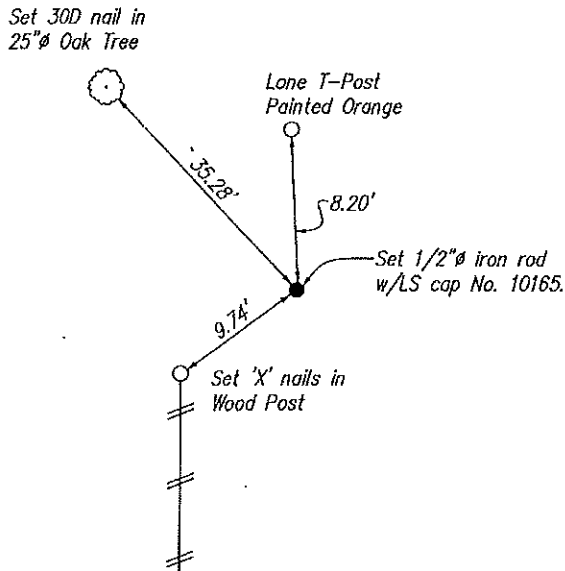
Land Survey Monuments situated in Section 28 OF 28, Township 97 North, Range 11 West, of the Fifth Principal Meridian, Chickasaw County, Iowa.
 Previously recorded in no record on file in County Recorder's Office.
 (book, page, document number, etc.)

(Show reason for preparing this certificate, the evidence and detailed procedures used in establishing the corner positions and monumentation found or placed.)

Monument Description and Remarks: No record of previous corner monumentation could be found. Established corner position at the intersection of 1/4-1/4 section lines according to a plat of survey that is recorded in Book 2012-1806 of Chickasaw County Records. Searched area with magnetic locator and probe but found nothing. Set 1/2"Ø iron rod w/LS cap No. 10165.

PLAN - VIEW

(Show a minimum of three reference ties to durable physical objects, relevant monuments and physical conditions that will enable recovery of the corner.)



Cor. X
 28-97-11

I hereby certify that this land surveying document was prepared by me or under my direct personal supervision and that I am a duly Registered Land Surveyor under the laws of the state of Iowa.

Roger R. Mohn 6/8, 2018
 ROGER R. MOHN, P.E. & L.S. Iowa Registration No. 10165
 My registration expires December 31, 2018

List Corners to be Indexed			
Corners	Section	Twp	Range
NE Cor. of SW1/4-NW1/4	28	97N	11W

SEAL

