

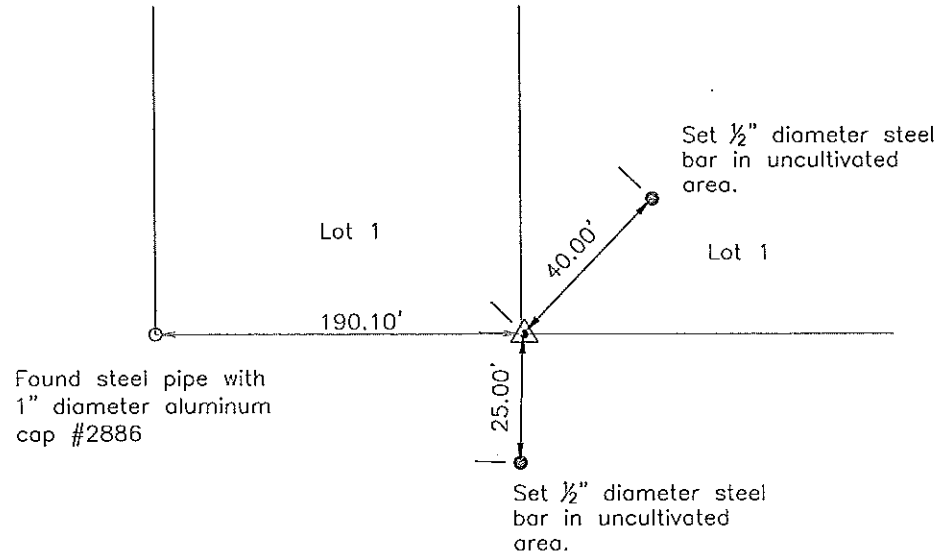
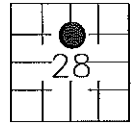
Prepared by: Erdman Engineering, P.C., 708 Commerce Drive, P.O. Box 246, Decorah, Iowa 52101 (563) 382-4194

**United States Public Land Survey Corner Certificate**  
 of

Land Survey Monuments situated in Section 28, Township 97, Range 11 West of the 5th Principal Meridian in Chickasaw County, Iowa. Previously recorded in does not apply in the county Recorder's Office.

Monument Description and Remarks: This certificate is prepared in accordance with Section 355.11 of the Code of Iowa. No previous certificate has been filed for this corner location. Based on the plat of survey recorded in Book 139 page 87 in the Chickasaw County Recorder's Office we found a steel pipe with 1" diameter aluminum cap #2886 that matches the description of the monument set previously beside a stone at the N 1/8 Corner. We did not find the stone as it appears to have been removed. We used the pipe with cap as the N 1/8 Corner of Section 28, Township 97 North, Range 11 West.

Plan-View



cor Y  
 28-97-11

I hereby certify that this land surveying document was prepared and the related survey work was performed by me or under my direct personal supervision and that I am a duly licensed Land Surveyor under the laws of the State of Iowa.

Signature Lindsay Erdman  
 Lindsay Erdman, P.E. and P.L.S. Iowa License Number 11442

Date: 1/14/13

My license renewal date is December 31, 2014

Corner(s) to be Indexed

Corner	Section	Township	Range
N 1/8	28	97	11