

UNITED STATES PUBLIC LAND SURVEY CORNER CERTIFICATE
OF

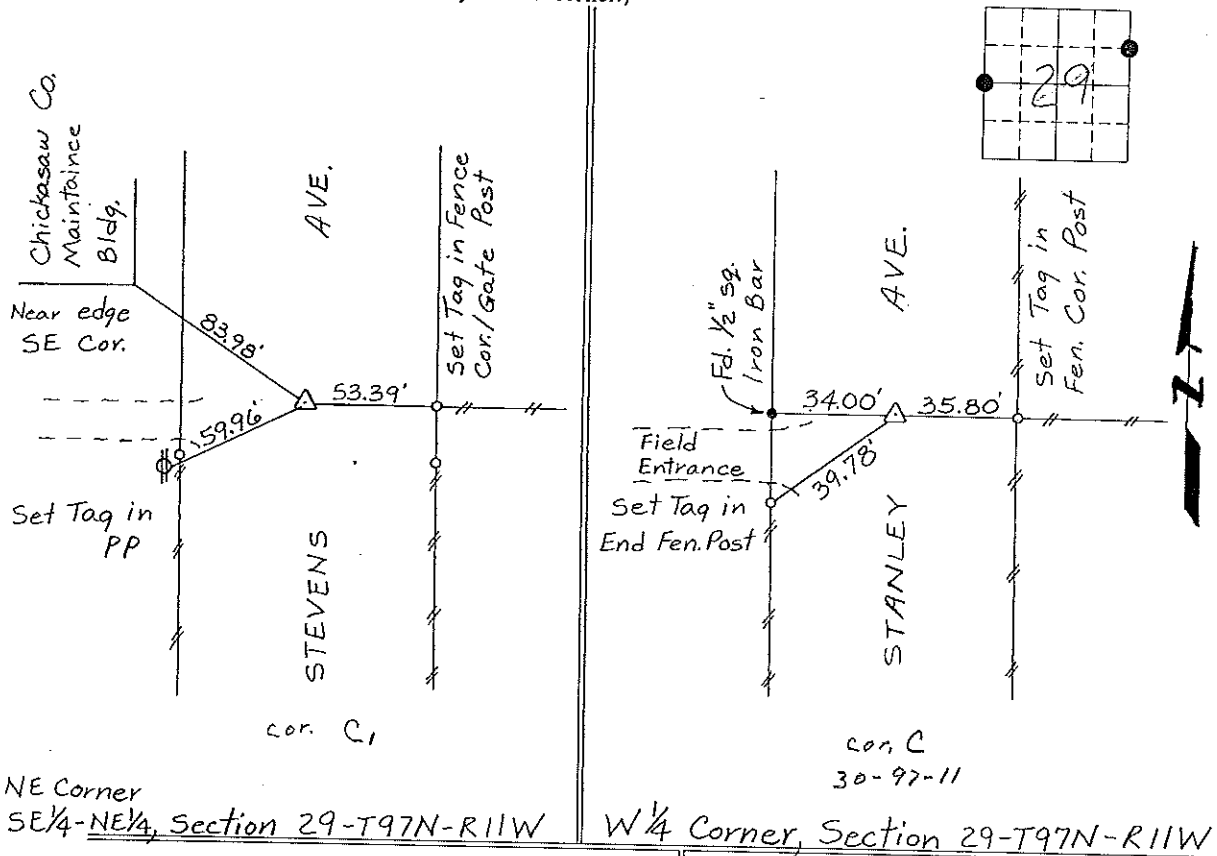
Land Survey Monuments situated in Section 29, Township 97 North, Range 11 West, of the Fifth Principal Meridian, Chickasaw County, Iowa.
Previously recorded in None in County Recorder's Office.
(book, page, document number, etc.)*

(Show reason for preparing this certificate, the evidence and detailed procedures used in establishing the corner positions and monumentation found or placed.)

Monument Description and Remarks: NE Cor., SE 1/4-NE 1/4, Section 29-T97N-R11W:
Found 3/4" Iron Pin.
W 1/4 Corner, Section 29, T97N, R11W: Set 1/2" Rebar w/cap from
Reference Tie on Line to E 1/4 Cor. & checked Section Breakdown.

PLAN - VIEW

(Show a minimum of three reference ties to durable physical objects, relevant monuments and physical conditions that will enable recovery of the corner.)



NE Corner
SE 1/4-NE 1/4, Section 29-T97N-R11W

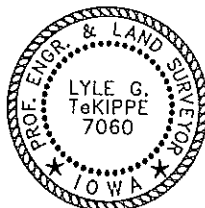
W 1/4 Corner, Section 29-T97N-R11W

I hereby certify that the survey work was completed and this certificate was prepared by me or under my direct personal supervision and that I am a duly registered land surveyor under the laws of the state of Iowa.

Signature: Lyle G. TeKippe
Lyle G. TeKippe

Date: 5-15-55 Reg. No. 7060
My Registration Renewal Date is December 31, 1996

Seal



Corners	Section	Twp.	Range
NE Cor	29	97N	11W
SE 1/4-NE 1/4	29	97-11	
W 1/4	29	97N	11W
Cor C - 30-97-11			

Placed in to Book 6/95