

2005 FEB 22 AM 8 47

CINDY MESSERSMITH
 COUNTY RECORDER

TeKIPPE ENGINEERING, P.C., 128 South Vine Street, West Union, Iowa 52175 Phone (563) 422-5131

UNITED STATES PUBLIC LAND SURVEY CORNER CERTIFICATE

OF

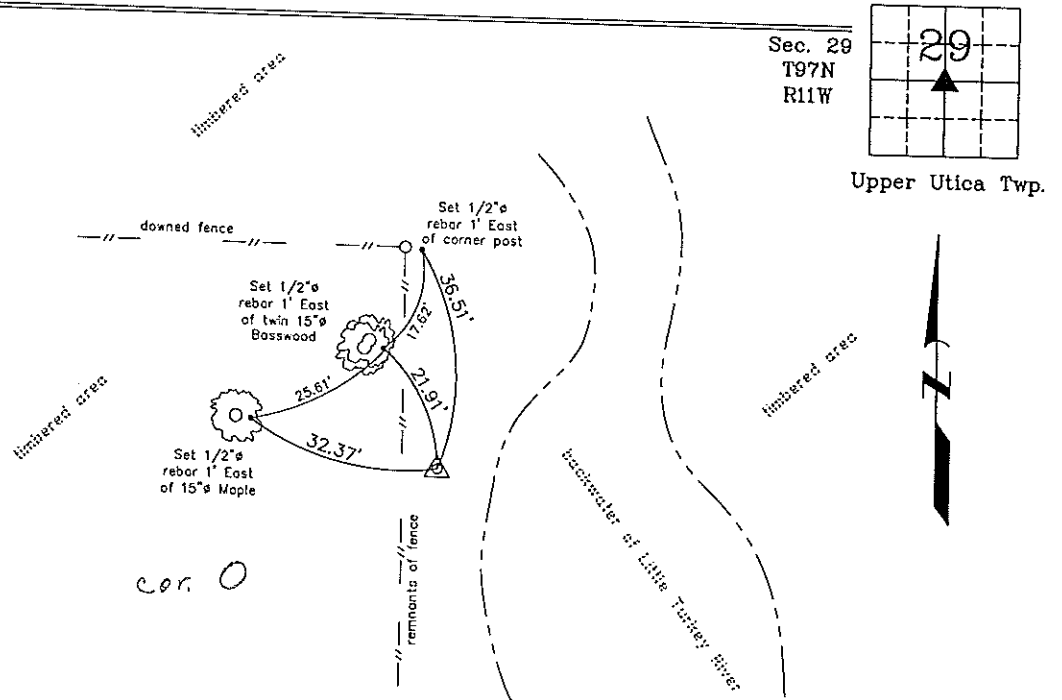
Land Survey Monuments situated in Section 29, Township 97 North, Range 11 West of the Fifth Principal Meridian, CHICKASAW County, Iowa.
 Previously recorded in none in County Recorder's Office.
(book, page, document number, etc.)

(Show reason for preparing this certificate, the evidence and detailed procedures used in establishing the corner positions and monumentation found or placed.)

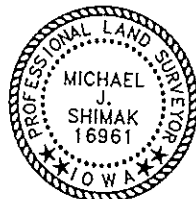
Monument Description and Remarks: Center of Section 29 T97N R11W: Set 1/2"Ø rebar w/2"Ø aluminum cap PLS 16961 at the intersection of the 1/4 Section Lines.

PLAN - VIEW

(Show a minimum of three reference ties to durable physical objects, relevant monuments and physical conditions that will enable recovery of the corner.)



Center of Section 29 T97N R11W
 Set 1/2"Ø rebar w/2"Ø aluminum cap PLS 16961



I hereby certify that this land surveying document was prepared and the related survey work was performed by me or under my direct personal supervision and that I am a duly licensed Land Surveyor under the laws of the State of Iowa.

Michael J. Shimak February 18, 2005
 Michael J. Shimak Date

License number 16961
 My license renewal date is December 31, 2005.
 Sheets covered by this seal: Individual

Corners	List Corners to be Indexed		
	Section	Twp.	Range
Center	29	97N	11W

Project Number 05029.LS
 FB. 46L PG. 33-34

X:\Section Corners\Sec. 29\29-97-11m.dwg

County Recorder's