

Chickasaw Co. Recorder  
 Cindy Messersmith  
**Fee Book 2011-0266**  
 02/17/2011 @1154AM  
 SCC SEC COR CERT  
 Book: Page: # Pages: 1  
 Total Fees: \$9.00

Prepared by & Return to: Harold - Reicks Surveying, 19 East Main Street, New Hampton, IA 50655, Ph. 641-394-2725

**UNITED STATES PUBLIC LAND SURVEY CORNER CERTIFICATE**

Land Survey Monuments situated in Section 29, Township 97 North, Range 11 West of the Fifth Principal Meridian, Chickasaw County, Iowa. 1.) Previously recorded in Bk. 158, Pg. 69 in the County Recorder's office, 2.) Previously recorded in Bk. 158, Pg. 70 in the County Recorder's office.

This certificate is being prepared in compliance with Iowa Code Chapter 355.11 because:

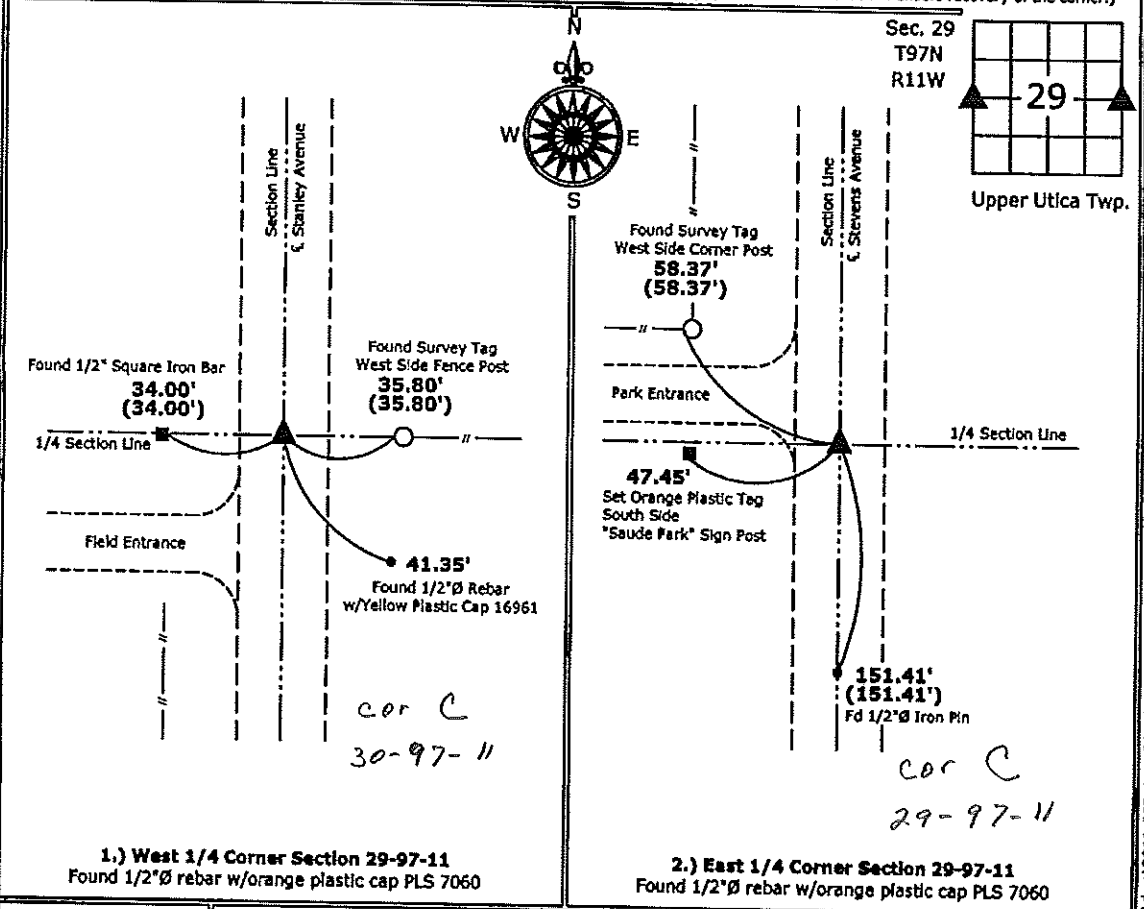
- There is no certificate on file for this corner.
- 1.) & 2.) There are no longer three valid ties of record.
- 1.) & 2.) There are changes to reference ties of record.
- There is change of monumentation of record.
- To clarify description of record monument (ties).

**Monument Description and Remarks:**

- 1.) **West 1/4 Corner:** Found 1/2"Ø rebar with red plastic cap PLS 7060 with information obtained from previous Section Corner Certificate.
- 2.) **East 1/4 Corner:** Found 1/2"Ø rebar with red plastic cap PLS 7060 with information obtained from previous Section Corner Certificate.

**PLAN - VIEW**

(Show a minimum of three reference ties to durable physical objects, relevant monuments and physical conditions that will enable recovery of the corner.)



1.) **West 1/4 Corner Section 29-97-11**  
 Found 1/2"Ø rebar w/orange plastic cap PLS 7060

2.) **East 1/4 Corner Section 29-97-11**  
 Found 1/2"Ø rebar w/orange plastic cap PLS 7060



I hereby certify that this land surveying document was prepared and the related survey work was performed by me or under my direct personal supervision and that I am a duly licensed Land Surveyor under the laws of the State of Iowa.  
*Kirk D. Reicks 2-17-11*  
 Kirk D. Reicks Date:  
 License number 19211  
 My license renewal date is December 31, 2012.  
 Sheets covered by this seal: Individual sheet only

List Corners to be Indexed			
Corners	Section	Twp.	Range
W 1/4	29	97	11
E 1/4	29	97	11

Project Number: 2011-002  
 FB: Chickasaw County 2, Pgs. 63-64

File: S:\\_Projects\2011\2011-002\dwg\2011-002.dwg, 2/17/2011 10:43:13 AM

**UNITED STATES PUBLIC LAND SURVEY CORNER CERTIFICATE**

OF

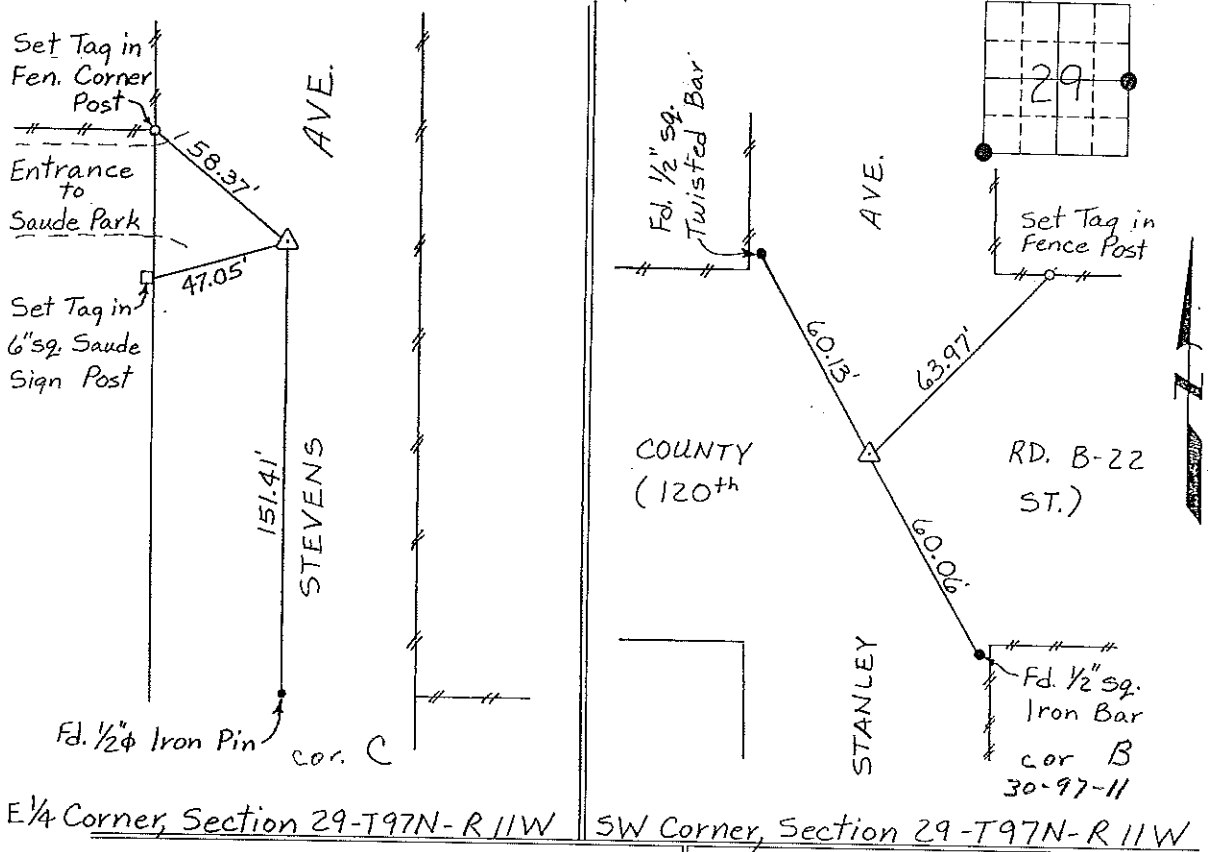
Land Survey Monuments situated in Section 29, Township 97 North, Range 11 West, of the Fifth Principal Meridian, Chickasaw County, Iowa.  
 Previously recorded in None in County Recorder's Office.  
(book, page, document number, etc.)

(Show reason for preparing this certificate, the evidence and detailed procedures used in establishing the corner positions and monumentation found or placed.)

Monument Description and Remarks: E 1/4 Corner, Section 29-T97N-R11W: Found 5/8" Iron Pin 2.6' deep, raised with 1/2" Rebar w/cap.  
SW Corner, Section 29-T97N-R11W: Found PK Nail.

**PLAN - VIEW**

(Show a minimum of three reference ties to durable physical objects, relevant monuments and physical conditions that will enable recovery of the corner.)



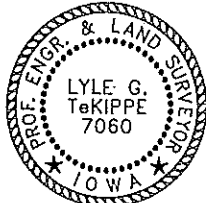
E 1/4 Corner, Section 29-T97N-R 11W      SW Corner, Section 29-T97N-R 11W

I hereby certify that the survey work was completed and this certificate was prepared by me or under my direct personal supervision and that I am a duly registered land surveyor under the laws of the state of Iowa.

Signature: Lyle G. TeKippe  
 Lyle G. TeKippe

Date: 5-15-95 Reg. No. 7060  
 My Registration Renewal Date is December 31, 1996

Seal



List Corners to be Indexed			
Corners	Section	Twp.	Range
E 1/4	29	97N	11W
Cor C 29-97-11			
SW	29	97N	11W
Cor B. 30-97-11			

*Placed in tie  
 book 6/15/95*