

UNITED STATES PUBLIC LAND SURVEY CORNER CERTIFICATE

OF 19

Land Survey Monuments situated in Section 29, Township 97 North, Range 11 West, of the Fifth Principal Meridian, Chickasaw County, Iowa. Previously recorded in None in County Recorder's Office.

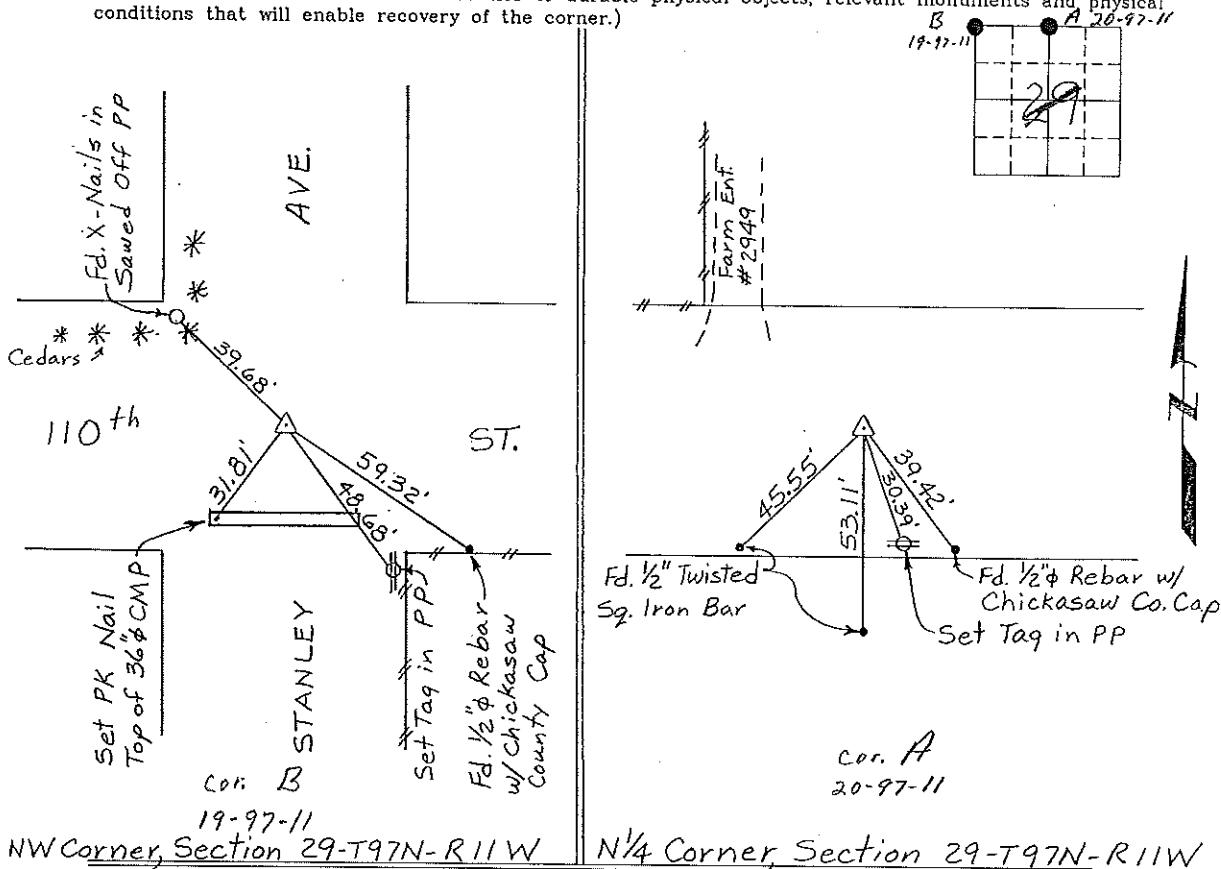
(Show reason for preparing this certificate, the evidence and detailed procedures used in establishing the corner positions and monumentation found or placed.)

Monument Description and Remarks: NW Corner, Section 29-T97N-R11W: Found 1/2" Iron Pin 11" deep.  
N 1/4 Corner, Section 29-T97N-R11W: Found 2" Gas Pipe 2.9' deep, raised with 1/2" Rebar w/cap.

Corner B:  
 Section 19-97-11  
 As referred to in  
 Engr. T.C. Book

PLAN - VIEW

(Show a minimum of three reference ties to durable physical objects, relevant monuments and physical conditions that will enable recovery of the corner.)

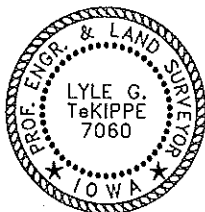


I hereby certify that the survey work was completed and this certificate was prepared by me or under my direct personal supervision and that I am a duly registered land surveyor under the laws of the state of Iowa.

Signature Lyle G. TeKippe  
 Lyle G. TeKippe

Date: 5-15-95 Reg. No. 7060  
 My Registration Renewal Date is December 31, 1996

Seal



List Corners to be Indexed			
Corners	Section	Twp.	Range
NW	29	97N	11W
	Cor B	19-97-11	
N 1/4	29	97N	11W
	Cor A	20-97-11	

Placed in file  
 Book 6/98