

Prepared by & Return to: Herold - Reicks Surveying, 10 East Main Street, New Hampton, IA 50659, Ph. 641-394-2725

UNITED STATES PUBLIC LAND SURVEY CORNER CERTIFICATE

Land Survey Monuments situated in Section 20, Township 97 North, Range 11 West of the Fifth Principal Meridian, Chickasaw County, Iowa.

This certificate is being prepared in compliance with Iowa Code Chapter 355.11 because:

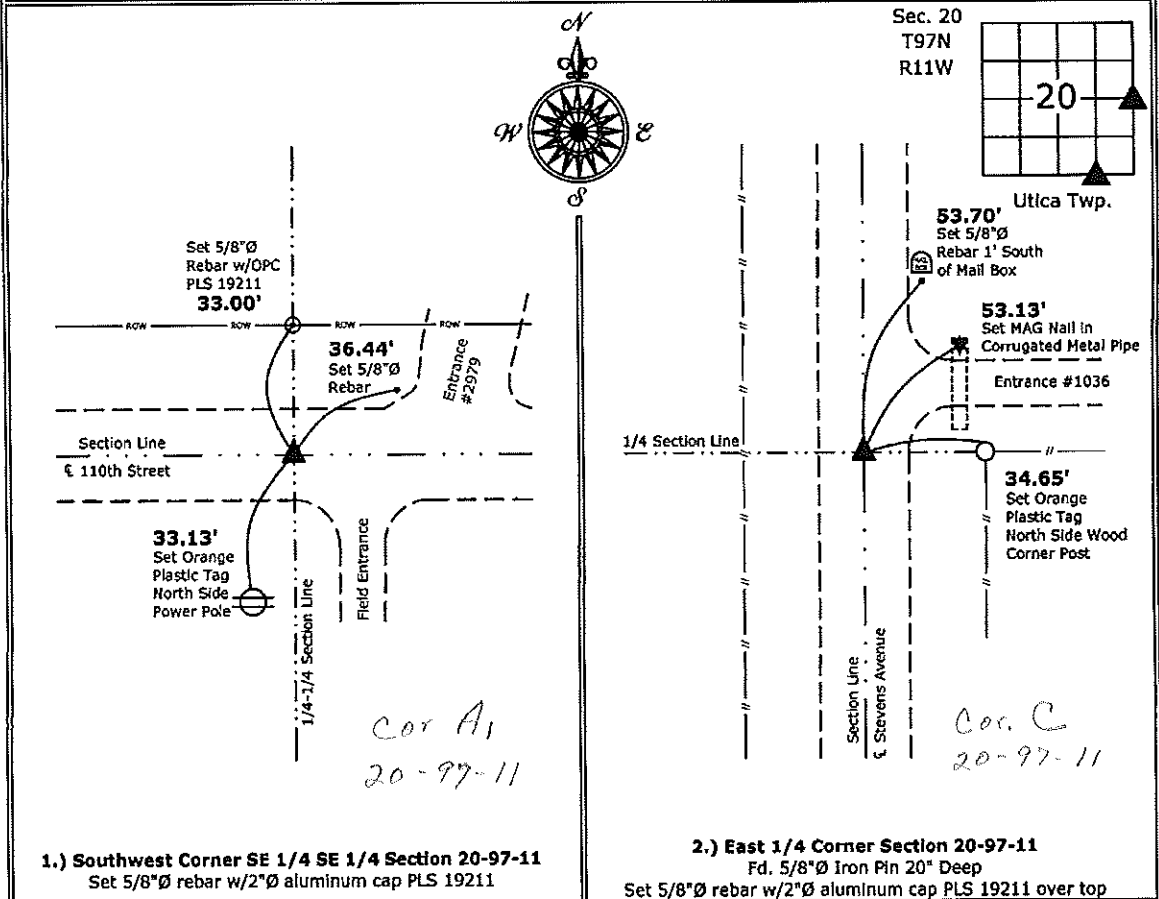
- 182 There is no certificate on file for this corner.
- There are no longer three valid ties of record.
- There are changes to reference ties of record.
- There is change of monumentation of record.
- To clarify description of record monument (ties).

Monument Description and Remarks:

- 1.) **Southwest Corner SE 1/4 SE 1/4 Corner:** Set 5/8"Ø rebar with 2"Ø aluminum cap PLS 19211 equidistant and online between the South 1/4 and Southeast Corners of Section 20.
- 2.) **East 1/4 Corner:** Fd. 5/8"Ø Iron Pin 20" deep with Information obtained from the County Engineer's office. Set 5/8"Ø rebar with 2"Ø aluminum cap PLS 19211 overtop to perpetuate the monument.

PLAN - VIEW

(Show a minimum of three reference ties to durable physical objects, relevant monuments and physical conditions that will enable recovery of the corner.)



1.) **Southwest Corner SE 1/4 SE 1/4 Section 20-97-11**
 Set 5/8"Ø rebar w/2"Ø aluminum cap PLS 19211

2.) **East 1/4 Corner Section 20-97-11**
 Fd. 5/8"Ø Iron Pin 20" Deep
 Set 5/8"Ø rebar w/2"Ø aluminum cap PLS 19211 over top



I hereby certify that this land surveying document was prepared and the related survey work was performed by me or under my direct personal supervision and that I am a duly licensed Land Surveyor, under the laws of the State of Iowa.

Kirk D. Reicks 8-23-12
 Kirk D. Reicks Date:

License number 19211
 My license renewal date is December 31, 2012.
 Sheets covered by this seal: Individual sheet only

List Corners to be Indexed			
Corners	Section	Twp.	Range
SW-SE-SE	20	97	11
E 1/4	20	97	11

Project Number: 2011-149
 FB: Chickasaw County 4, Pgs. 57-58