

UNITED STATES PUBLIC LAND SURVEY CORNER CERTIFICATE

OF 20

Corner B:
Section 20-97-11
as referred to in
Engr. T.C. Book.

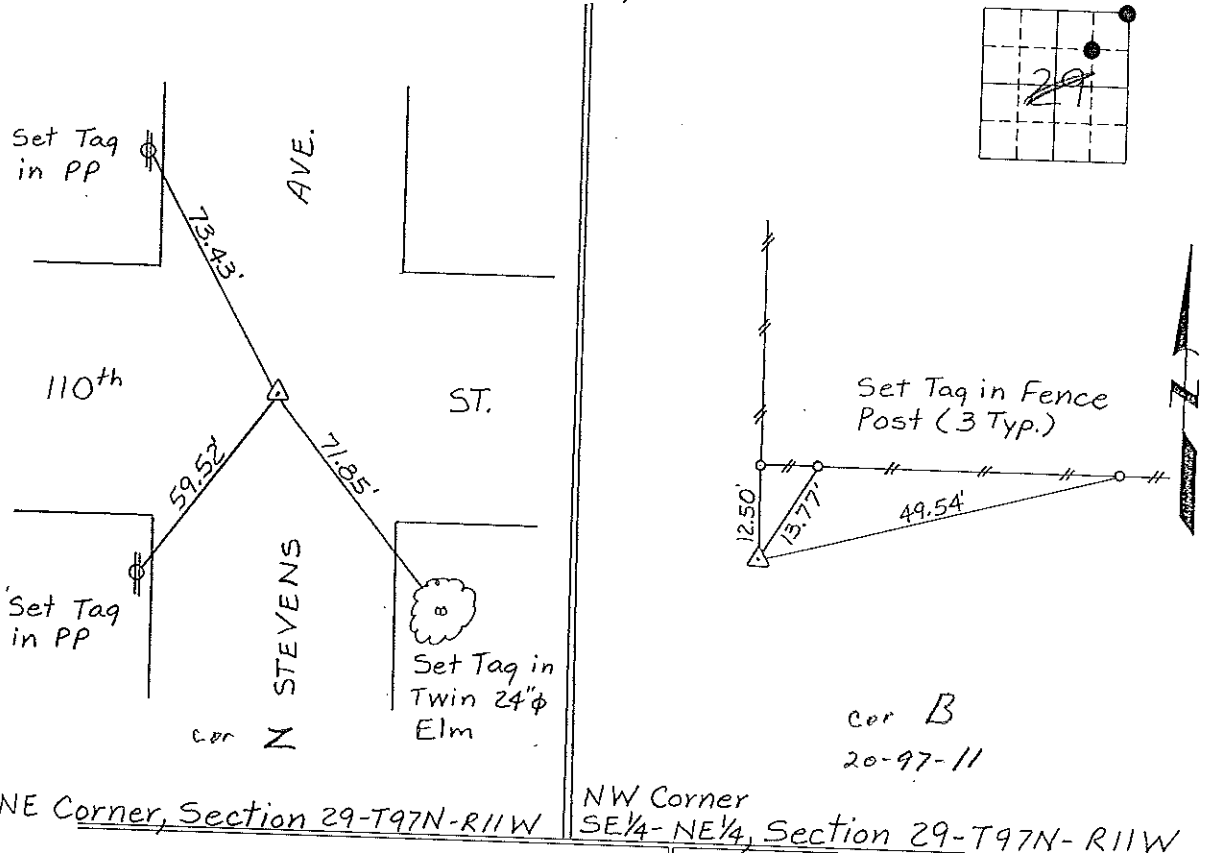
Land Survey Monuments situated in Section 29, Township 97 North, Range 11 West, of the Fifth Principal Meridian, Chickasaw County, Iowa.
Previously recorded in None in County Recorder's Office.
(book, page, document number, etc.)

(Show reason for preparing this certificate, the evidence and detailed procedures used in establishing the corner positions and monumentation found or placed.)

Monument Description and Remarks: NE Corner, Section 29-T97N-R11W:
Found 1/2" Iron Pipe.
NW Corner, SE 1/4-NE 1/4, Section 29-T97N-R11W: Set 1/2" Rebar
with cap.

PLAN - VIEW

(Show a minimum of three reference ties to durable physical objects, relevant monuments and physical conditions that will enable recovery of the corner.)



NE Corner, Section 29-T97N-R11W

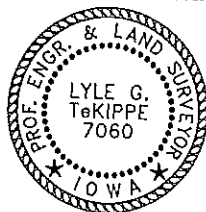
NW Corner
SE 1/4-NE 1/4, Section 29-T97N-R11W

I hereby certify that the survey work was completed and this certificate was prepared by me or under my direct personal supervision and that I am a duly registered land surveyor under the laws of the state of Iowa.

Signature: Lyle G. TeKippe
Lyle G. TeKippe

Date: 5-15-95 Reg. No. 7060
My Registration Renewal Date is December 31, 1996

Seal



List Corners to be Indexed			
Corners	Section	Twp.	Range
NE	29	97N	11W
Cor B 20-97-11			
NW Cor.			
SE 1/4-NE 1/4	29	97N	11W
? Cor X	29-97-11		

*Placed in
the book*