

2005 FEB 11 AM 9 23

CINDY MESSERSMITH
COUNTY RECORDER

Corner C
Section 25-97-12
As referred to in
Engr. Tie Book.

TeKIPPE ENGINEERING, P.C., 128 South Vine Street, West Union, Iowa 52175 Phone (563) 422-5131

UNITED STATES PUBLIC LAND SURVEY CORNER CERTIFICATE

OF

Land Survey Monuments situated in Section 30, Township 97 North, Range 11 West of the Fifth Principal Meridian, CHICKASAW County, Iowa. Previously recorded in none in County Recorder's Office.
(book, page, document number, etc.)

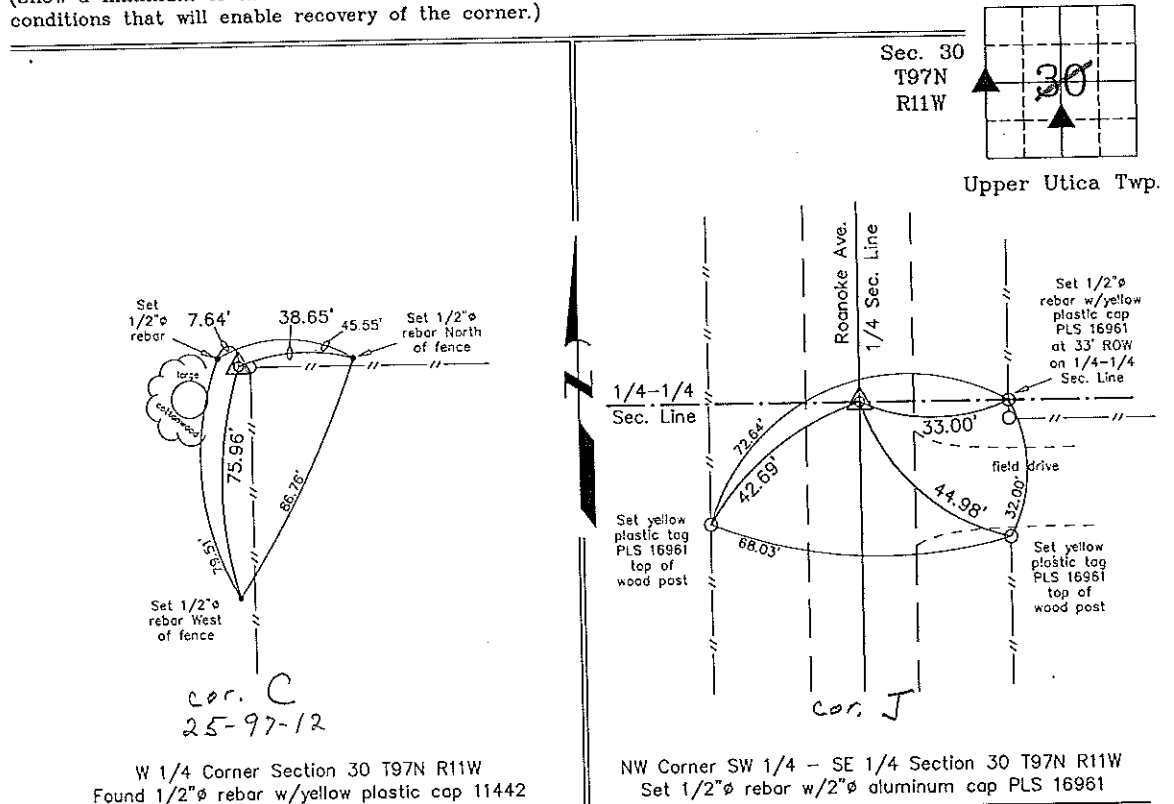
(Show reason for preparing this certificate, the evidence and detailed procedures used in establishing the corner positions and monumentation found or placed.)

Monument Description and Remarks: W 1/4 Corner Section 30 T97N R11W: Found 1/2"Ø rebar w/yellow plastic cap 11442 with information obtained from a Survey and Plat made by Lindsay Erdman recorded in the Chickasaw County Recorder's Office June 24, 1994 in Deeds Book 177, page 177.

NW Corner SW 1/4 - SE 1/4 Section 30 T97N R11W: Set 1/2"Ø rebar w/2"Ø aluminum cap PLS 16961 equidistant and on line between the Center of the Section and the S 1/4 Corner.

PLAN - VIEW

(Show a minimum of three reference ties to durable physical objects, relevant monuments and physical conditions that will enable recovery of the corner.)



I hereby certify that this land surveying document was prepared and the related survey work was performed by me or under my direct personal supervision and that I am a duly licensed Land Surveyor under the laws of the State of Iowa.
Michael J. Shimak February 10, 2005
Michael J. Shimak Date
License number 16961
My license renewal date is December 31, 2005.
Sheets covered by this seal: Individual

List Corners to be Indexed			
Corners	Section	Twp.	Range
W 1/4	30	97N	11W
NW-SW-SE	30	97N	11W

Project Number 05028.IS
FB. 46L PG. 30-32
X:\Section Corners\Sec. 30\30-97-11kr.dwg

County Engineer