

Corner A:
 Section 19-97-11
 As referred to in
 Engr. T.C. Book

FILED 2005 - 0262
 RECORDER'S OFFICE
 CHICKASAW COUNTY, IOWA
 2005 FEB 11 AM 9 24
 CINDY MESSERSMITH
 COUNTY RECORDER

TeKIPPE ENGINEERING, P.C., 128 South Vine Street, West Union, Iowa 52175 Phone (563) 422-5131

UNITED STATES PUBLIC LAND SURVEY CORNER CERTIFICATE

OF 19

Land Survey Monuments situated in Section 30, Township 97 North, Range 11 West of the Fifth Principal Meridian, CHICKASAW County, Iowa.

Previously recorded in none in County Recorder's Office.
 (book, page, document number, etc.)

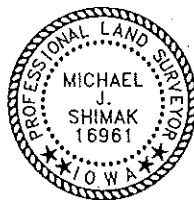
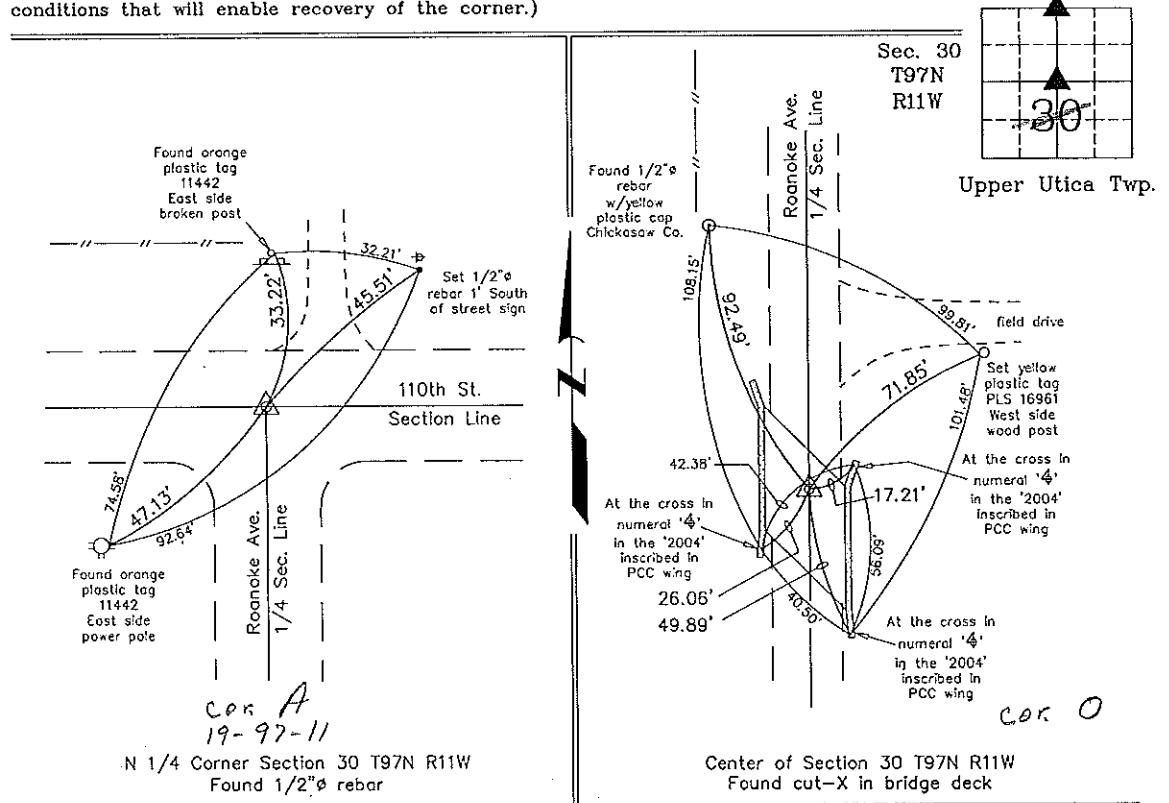
(Show reason for preparing this certificate, the evidence and detailed procedures used in establishing the corner positions and monumentation found or placed.)

Monument Description and Remarks: N 1/4 Corner Section 30 T97N R11W: Found 1/2"Ø rebar with information obtained from a Survey and Plat made by Lindsay Erdman recorded in the Chickasaw County Recorder's Office June 27, 1994 in Deeds Book 177, Page 177.

Center of Section 30 T97N R11W: Found cut-X on bridge deck with information obtained from the Chickasaw County Engineer's Office.

PLAN - VIEW

(Show a minimum of three reference ties to durable physical objects, relevant monuments and physical conditions that will enable recovery of the corner.)



I hereby certify that this land surveying document was prepared and the related survey work was performed by me or under my direct personal supervision and that I am a duly licensed Land Surveyor under the laws of the State of Iowa.

Michael J. Shimak February 10, 2005
 Michael J. Shimak Date
 License number 16961
 My license renewal date is December 31, 2005.
 Sheets covered by this seal: Individual

List Corners to be Indexed			
Corners	Section	Twp.	Range
N 1/4	30	97N	11W
Center	30	97N	11W

Project Number 05028.LS
 FB. 46L PG. 30-32

X:\Section Corners\Sec. 30\30-97-11cm.dwg

County Engineer's