

2005 FEB 11 AM 9 23

CINDY MESSERSMITH
COUNTY RECORDER

TEKIPPE ENGINEERING, P.C., 128 South Vine Street, West Union, Iowa 52175 Phone (563) 422-5131

UNITED STATES PUBLIC LAND SURVEY CORNER CERTIFICATE

OF

Land Survey Monuments situated in Section 30, Township 97 North, Range 11 West of the Fifth Principal Meridian, CHICKASAW County, Iowa.

Previously recorded in none in County Recorder's Office.
(book, page, document number, etc.)

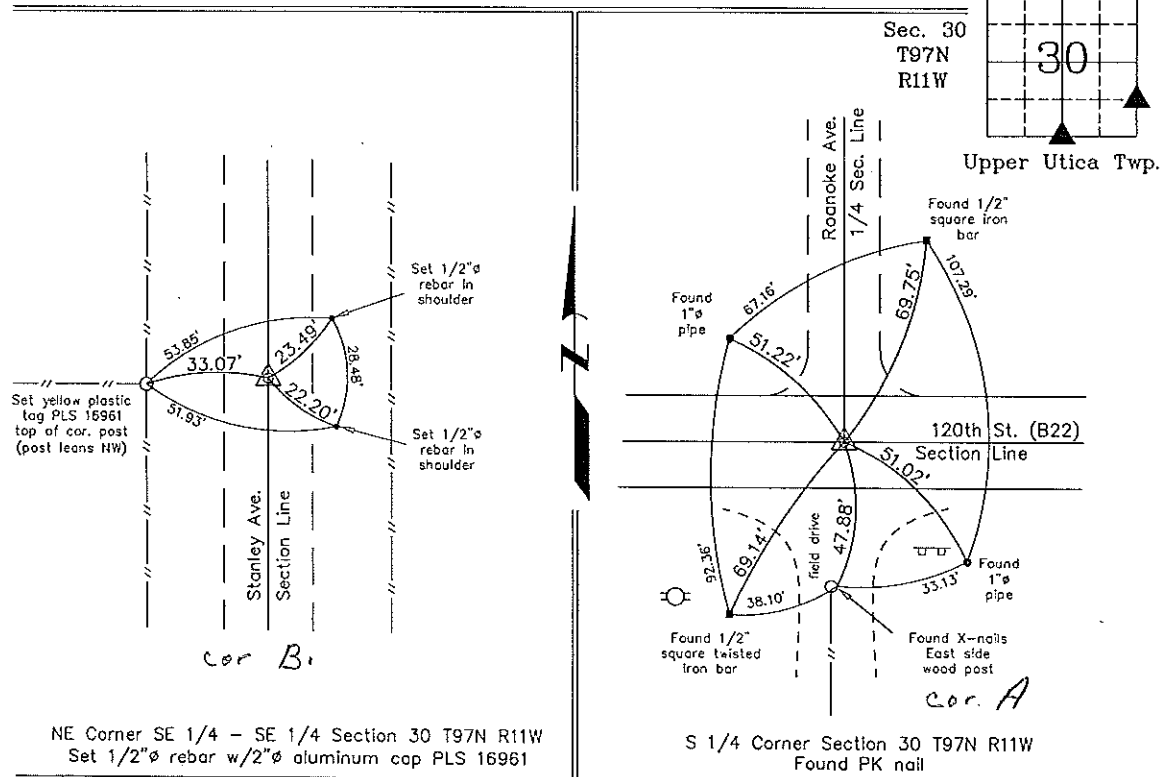
(Show reason for preparing this certificate, the evidence and detailed procedures used in establishing the corner positions and monumentation found or placed.)

Monument Description and Remarks: NE Corner SE 1/4 - SE 1/4 Section 30 T97N R11W:
Set 1/2"Ø rebar w/2"Ø aluminum cap PLS 16961 equidistant and on line between the
E 1/4 Corner and the SE Corner.

S 1/4 Corner Section 30 T97N R11W: Found PK nail with information obtained from a
Survey and Plat made by Lindsay Erdman recorded in the Chickasaw County Recorder's
Office June 27, 1994 in Deeds Book 177, Page 177.

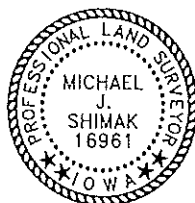
PLAN - VIEW

(Show a minimum of three reference ties to durable physical objects, relevant monuments and physical conditions that will enable recovery of the corner.)



NE Corner SE 1/4 - SE 1/4 Section 30 T97N R11W
Set 1/2"Ø rebar w/2"Ø aluminum cap PLS 16961

S 1/4 Corner Section 30 T97N R11W
Found PK nail



I hereby certify that this land surveying document was prepared and the related survey work was performed by me or under my direct personal supervision and that I am a duly licensed Land Surveyor under the laws of the State of Iowa.

Michael J. Shimak February 10, 2005
Michael J. Shimak Date

License number 16961
My license renewal date is December 31, 2005.
Sheets covered by this seek: Individual

List Corners to be Indexed			
Corners	Section	Twp.	Range
NE-SE-SE	30	97N	11W
S 1/4	30	97N	11W

Project Number 05028.LS
FB. 46L FC. 30-32

X:\Section Corners\Sec. 30\30-97-11w.dwg

County Engineer