

Prepared by & Return to: Herold - Reicks Surveying, 10 East Main Street, New Hampton, IA 50659, Ph. 641-394-2725

UNITED STATES PUBLIC LAND SURVEY CORNER CERTIFICATE

Land Survey Monuments situated in Section **31**, Township **97 North**, Range **11 West** of the Fifth Principal Meridian, **Chickasaw County, Iowa**. Previously not recorded in the County Recorder's office.

This certificate is being prepared in compliance with Iowa Code Chapter 355.11 because:

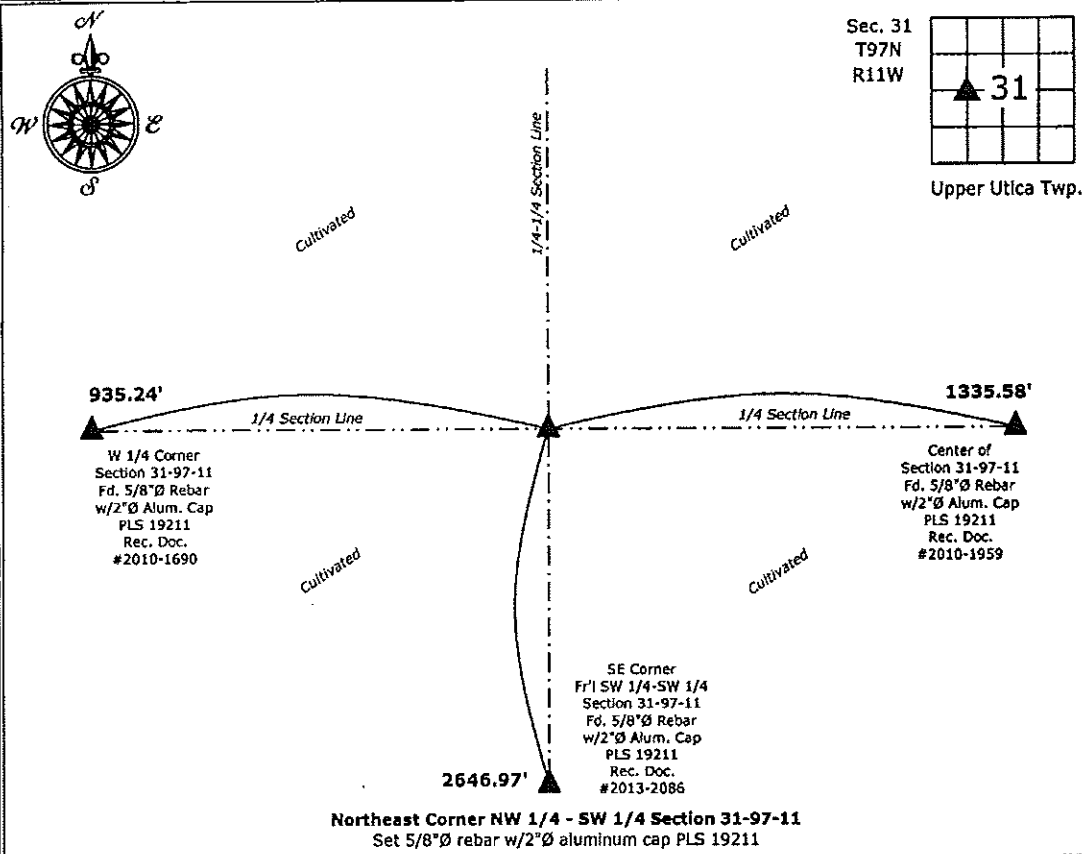
- There is no certificate on file for this corner.
- There are no longer three valid ties of record.
- There are changes to reference ties of record.
- There is change of monumentation of record.
- To clarify description of record monument (ties).

Monument Description and Remarks:

Northeast Corner NW 1/4 - SW 1/4: Set 5/8"Ø rebar with 2"Ø aluminum cap PLS 19211 from the Standard Bureau of Land Management Method, by the average of the distances of the original GLO survey notes between the Northwest Corner and the North Quarter Corner, and the Southwest Corner and the South Quarter Corner. This average was then utilized as a single proration of the distance between the West Quarter Corner and the Center of Section in order to establish the Corner position. Buried monument 18" deep in a cultivated field.

PLAN - VIEW

(Show a minimum of three reference ties to durable physical objects, relevant monuments and physical conditions that will enable recovery of the corner.)



I hereby certify that this land surveying document was prepared and the related survey work was performed by me or under my direct personal supervision and that I am a duly licensed Land Surveyor under the laws of the State of Iowa.

Kirk D. Reicks 8-28-14
 Kirk D. Reicks Date:
 License number 19211
 My license renewal date is December 31, 2014.
 Sheets covered by this seal: Individual sheet only

List Corners to be Indexed			
Corners	Section	Twp.	Range
NE-NW-SW	31	97	11
Project Number: 2014-168			
FB: Chickasaw County 6, Pg. 15			

File: S:_CAD Projects\County Control Systems\CHICKASAW\CHICK-7.dwg, 8/29/2014 3:22:45 PM