

*Herold - Reicks Surveying, 10 East Main Street, New Hampton, IA 50655, Ph. 641-394-2725, Fax. 641-394-2718*

### UNITED STATES PUBLIC LAND SURVEY CORNER CERTIFICATE

Land Survey Monuments situated in Section 31, Township 97 North, Range 11 West of the Fifth Principal Meridian, Chickasaw County, Iowa. 1.) & 2.) Not previously recorded in the County Recorder's office.

This certificate is being prepared in compliance with Iowa Code Chapter 355.11 because:



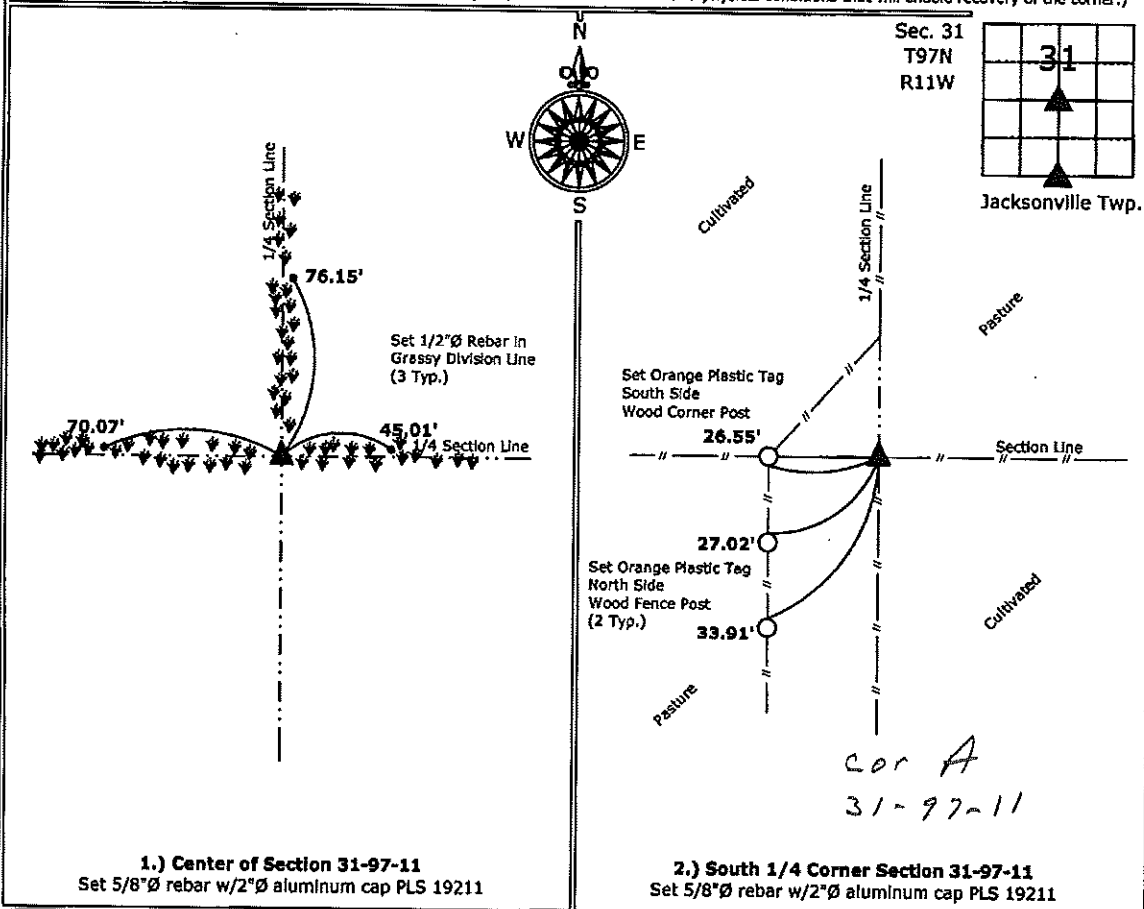
- 1.) & 2.)  There are no certificates on file for these corners.
- There are no longer three valid ties of record.
- There are changes to reference ties of record.
- There is change of monumentation of record.
- To clarify description of record monument (ties).

Monument Description and Remarks:

- 1.) **Center of Section:** Set 5/8"Ø with 2"Ø aluminum cap PLS 19211 at the intersection of Quarter Section Lines.
- 2.) **South 1/4 Corner:** Set 5/8"Ø with 2"Ø aluminum cap PLS 19211 at the intersection of possession line fences.

#### PLAN - VIEW

(Show a minimum of three reference ties to durable physical objects, relevant monuments and physical conditions that will enable recovery of the corner.)



1.) **Center of Section 31-97-11**  
 Set 5/8"Ø rebar w/2"Ø aluminum cap PLS 19211

2.) **South 1/4 Corner Section 31-97-11**  
 Set 5/8"Ø rebar w/2"Ø aluminum cap PLS 19211



I hereby certify that this land surveying document was prepared and the related survey work was performed by me or under my direct personal supervision and that I am a duly licensed Land Surveyor under the laws of the State of Iowa.

*Kirk D. Reicks* 11-30-10  
 Kirk D. Reicks Date:

License number 19211  
 My license renewal date is December 31, 2010.  
 Sheets covered by this seal: Individual sheet only

#### List Corners to be Indexed

Corners	Section	Twp.	Range
CTR	31	97	11
S 1/4	31	97	11

Project Number: 2010-102

FB: Chickasaw County 2, Pgs. 54-55