

Herold - Reicks Surveying, 10 East Main Street, New Hampton, IA 50659, Ph. 641-394-2725, Fax: 641-394-2718

UNITED STATES PUBLIC LAND SURVEY CORNER CERTIFICATE

Land Survey Monuments situated in Section **32**, Township **97** North, Range **11** West of the Fifth Principal Meridian, **Chickasaw** County, Iowa. Previously not recorded in County Recorder's office.

This certificate is being prepared in compliance with Iowa Code Chapter 355.11 because:

1. & 2.) There is no certificate on file for this corner.
 There are no longer three valid ties of record.
 There are changes to reference ties of record.
 There is change of monumentation of record.
 To clarify description of record monument (ties).

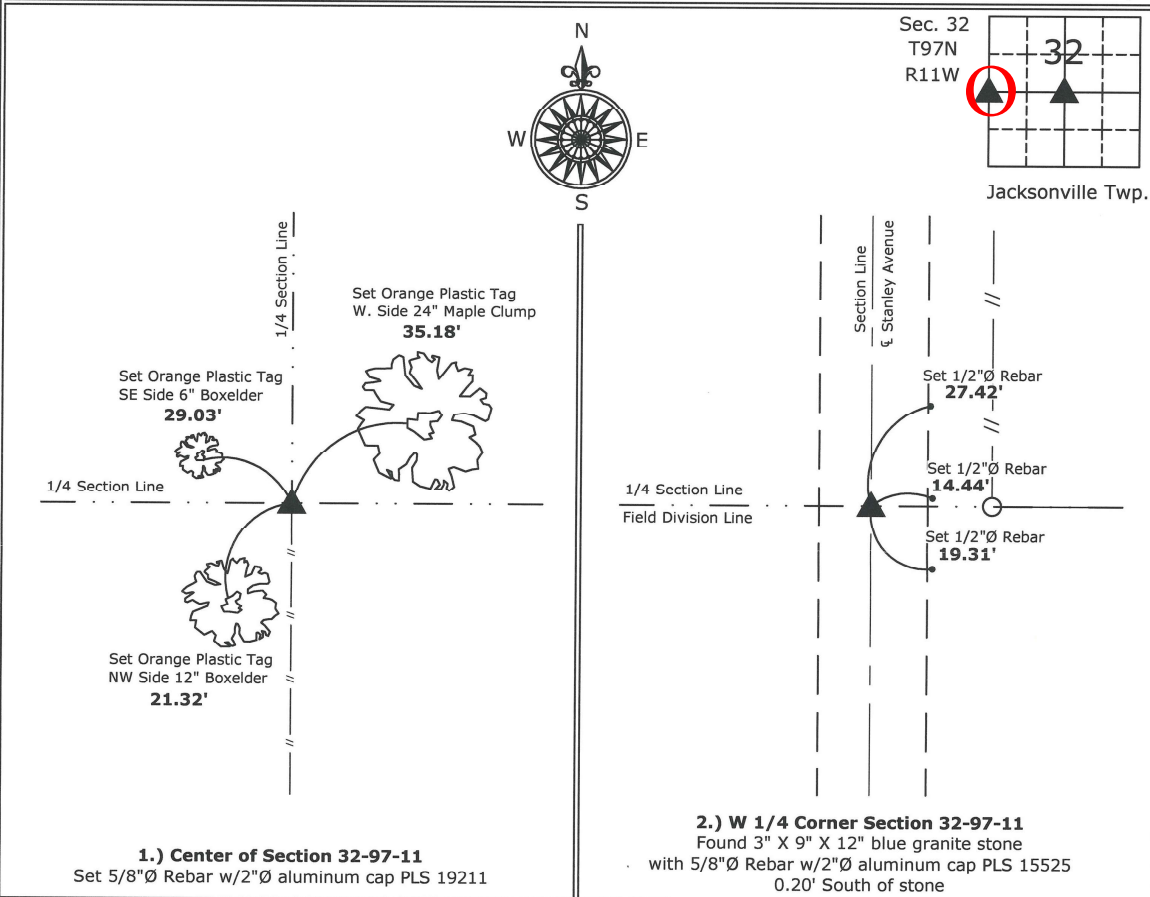
Monument Description and Remarks:

1.) Center of Section: Set 5/8"Ø rebar w/2"Ø aluminum cap PLS 19211 at the intersection of Quarter Section Lines.

2.) W 1/4 Corner: Found 3" X 9" X 12" blue granite stone with 5/8"Ø rebar w/2"Ø aluminum cap PLS 15525 0.20' South of stone, Corner found with information obtained from a Survey and Plat made by Paul R. Herold, Doc. #2008-1597, on file in the Chickasaw County Recorder's office, New Hampton, IA.

PLAN - VIEW

(Show a minimum of three reference ties to durable physical objects, relevant monuments and physical conditions that will enable recovery of the corner.)



I hereby certify that this land surveying document was prepared and the related survey work was performed by me or under my direct personal supervision and that I am a duly licensed Land Surveyor under the laws of the State of Iowa.

Kirk D. Reicks 5-14-10
Kirk D. Reicks Date:

License number 19211
My license renewal date is December 31, 2010.
Sheets covered by this seal: Individual sheet only

List Corners to be Indexed			
Corners	Section	Twp.	Range
CENTER	32	97	11
W 1/4	32	97	11

Project Number: 2009-134
FB: Chickasaw County 2, Pg. 22

File: S:\Projects\2009-134\dwg\2009-134.dwg, 5/14/2010 4:13:59 PM