

Corner C:
 Section 32-97-11
 As referred to in
 Engr Tie Book

Prepared by: Erdman Engineering, P.C., 708 Commerce Drive, P.O. Box 246, Decorah, Iowa 52101 (563) 382-4194

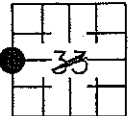
United States Public Land Survey Corner Certificate
 of 32

Land Survey Monuments situated in Section 32, Township 97, Range 11 West of the 5th Principal Meridian in Chickasaw County, Iowa. Previously recorded in does not apply in the county Recorder's Office.

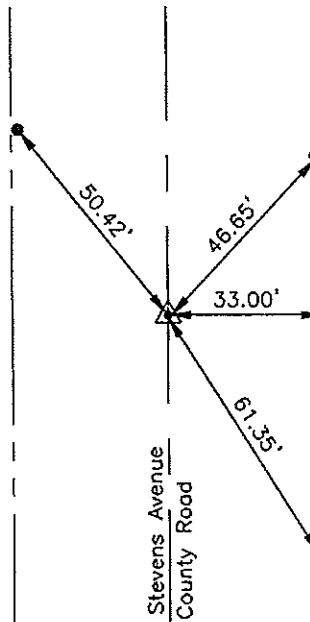
Monument Description and Remarks: This certificate is prepared in accordance with Section 193C of the Code of Iowa. No previous certificate has been filed for this corner location. Based on Chickasaw County Engineer's Reference Ties we found three steel bars with a Chickasaw County yellow plastic cap that had been used previously as tie markers. From these ties we found a steel bar with Chickasaw County yellow plastic cap at the approximate centerline of the county road. Chickasaw County Engineer's Refiner Ties show that an I.P. was reset in 2002. We used the bar with cap as the W 1/4 Corner of Section 33, Township 97 North, Range 11 West.

Plan-View

Cor C
 sec 32



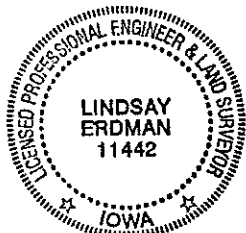
Found steel bar with Chickasaw County yellow plastic cap



Found steel bar with Chickasaw County yellow plastic cap

Set 5/8" diameter steel pipe with yellow plastic cap #111442

Found steel bar with Chickasaw County yellow plastic cap



Cor. C
 32-97-11

I hereby certify that this land surveying document was prepared and the related survey work was performed by me or under my direct personal supervision and that I am a duly licensed Land Surveyor under the laws of the State of Iowa.

Signature Lindsay Erdman
 Lindsay Erdman, P.E. and P.L.S. Iowa License Number 11442

Date: 3/24/06

My license renewal date is December 31, 2008

Corner(s) to be Indexed

Corner	Section	Township	Range
W 1/4	33	97	11