

Chickasaw Co. Recorder
Cindy Messersmith
Fee Book 2008-1670

08/29/2008 @0106PM
SCC SEC COR CERT
Book: Page: # Pages: 1
Total Fees: \$7.00

Herold - Reicks Surveying, 25 1/2 East Main Street, Suite 204, New Hampton, IA 50659, Ph. 641-394-2725

UNITED STATES PUBLIC LAND SURVEY CORNER CERTIFICATE

Land Survey Monuments situated in Section **32**, Township **97** North, Range **11** West of the Fifth Principal Meridian, **Chickasaw** County, Iowa. Not previously recorded in the **Chickasaw** County Recorder's office.

This certificate is being prepared in compliance with Iowa Code Chapter 355.11 because:

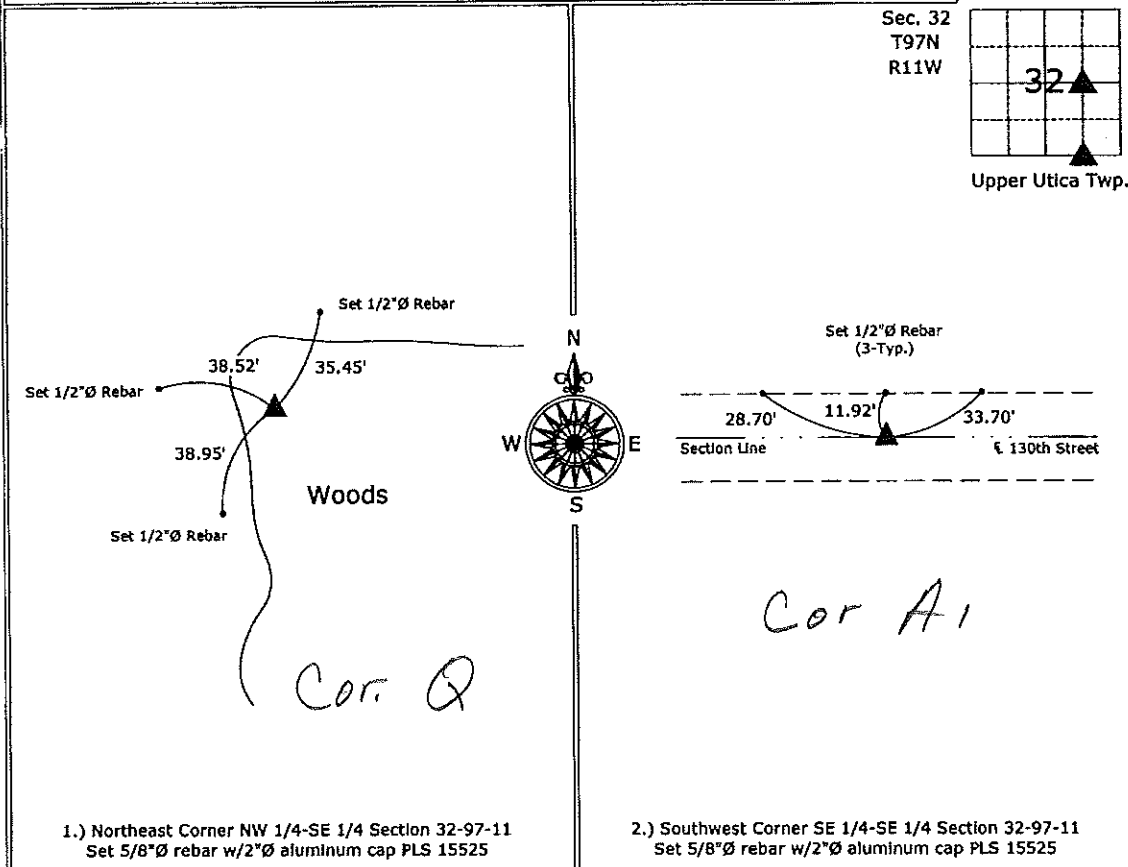
- There is no certificate on file for these corners.
- There are no longer three valid ties of record.
- There are changes to reference ties of record.
- There is change of monumentation of record.
- To clarify description of record monument (ties).

Monument Description and Remarks:

- 1.) Northeast Corner NW 1/4-SE 1/4 Section 32-97-11: Set 5/8"Ø rebar w/2"Ø aluminum cap PLS 15525 equidistant and on line between the Center and the East 1/4 Corner of the Section.
- 2.) Southwest Corner SE 1/4-SE 1/4 Section 32-97-11: Set 5/8"Ø rebar w/2"Ø aluminum cap PLS 15525 equidistant and on line between the S 1/4 Corner and the SE Corner of the Section.

PLAN - VIEW

(Show a minimum of three reference ties to durable physical objects, relevant monuments and physical conditions that will enable recovery of the corner.)



1.) Northeast Corner NW 1/4-SE 1/4 Section 32-97-11
Set 5/8"Ø rebar w/2"Ø aluminum cap PLS 15525

2.) Southwest Corner SE 1/4-SE 1/4 Section 32-97-11
Set 5/8"Ø rebar w/2"Ø aluminum cap PLS 15525



I hereby certify that this land surveying document was prepared and the related survey work was performed by me or under my direct personal supervision and that I am a duly licensed Land Surveyor under the laws of the State of Iowa.

Paul R. Herold 8-29-08
Paul R. Herold Date:
License number 15525
My license renewal date is December 31, 2008.
Sheets covered by this seal: Individual sheet only

List Corners to be Indexed			
Corners	Section	Twp.	Range
NE-NW-SE	32	97	11
SW-SE-SE	32	97	11

Project Number: 2008-081
FB: Chickasaw County 3, Pgs. 1-3

Pic: S:\Projects\2008\2008-081\dwg_8/28/2008-081.dwg, 8/28/2008 06:56:43