

DOCUMENT No. **00887** FILED FOR RECORD THE 12th DAY OF November, 1997 AT 8:36 O'CLOCK A.M. BOOK 165 DEEDS PAGE 418
 RECORDING FEE \$ 6.00 STATE OF IOWA, CHICKASAW COUNTY, Litha N. Goss Recorder
 TRANSFER FEE \$ _____ BY Chris A. Holligan Deputy

Corner B.
 Section 32-97-11
 As referred to in
 Engr. Tie Book

Prepared by: Erdman Engineering P.C. 708 Commerce Drive, P.O. Box 246, Decorah Iowa, 52101
 Phone (319)382-4194, Fax (319)382-3623

United States Public Land Survey Corner Certificate

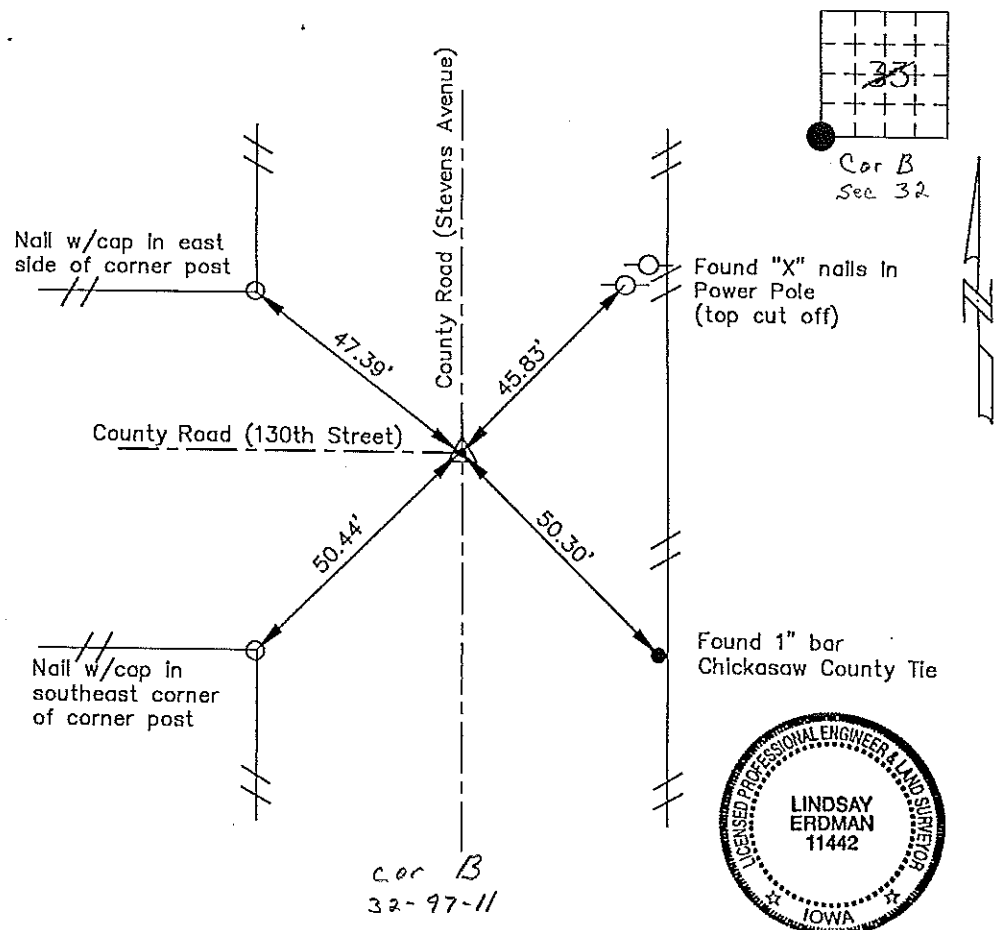
32 of

Land Survey Monuments situated in Section 33 Township 97 Range 11 of the Fifth Principle Meridian,
Chickasaw County, Iowa. Previously recorded in does not apply In County Recorders Office.

(Show reason for preparing this certificate, the evidence and detailed procedures used in establishing the corner positions and monumentation found or placed.)

Monument Description and Remarks: This certificate is prepared in accordance with Section 355.11 of the 1995 Code of Iowa. No previous certificate has been filed for this corner location. Based on Chickasaw County Engineer's Reference Ties we found a 1" bar, used as a tie marker, from this we found a bolt with a round head, matching the description from the ties, at the approximate C.C. of the County Roads, at the Southwest Corner of Section 33, Township 97 North, Range 11 West of the 5th P.M.

Plan-View
 (Show a minimum of three reference ties to durable physical objects, relevant monuments and physical conditions that will enable recovery of the corner.)



I hereby certify that the survey work was completed and this certificate was prepared by me or under by direct supervision and that I am a duly registered land surveyor under the laws of the State of Iowa.

Signature Lindsay Erdman
 Lindsay Erdman, P.E. and L.S.

Date: 11/11/97 Reg. No. 11442

My license renewal date is December 31, 1998

Corners	Section	Twp.	Range
SW	33	97	11