

Chickasaw Co. Recorder
 Cindy Messersmith
Fee Book 2008-1669
 08/29/2008 @0104PM
 SCC SEC COR CERT
 Book: Page: # Pages: 1
 Total Fees: \$7.00

Corner A:
 Section 29-97-11
 As referred to in
 Engr. The Book.

Herold - Reicks Surveying, 25 1/2 East Main Street, Suite 204, New Hampton, IA 50658, Ph. 641-994-2725

UNITED STATES PUBLIC LAND SURVEY CORNER CERTIFICATE

Land Survey Monuments situated in Section ²⁹ 32, Township 97 North, Range 11 West of the Fifth Principal Meridian, Chickasaw County, Iowa. 1.) Previously recorded in Bk. 158, Pg. 71, 2.) Previously not Recorded, in the Chickasaw County Recorder's office.

This certificate is being prepared in compliance with Iowa Code Chapter 355.11 because:

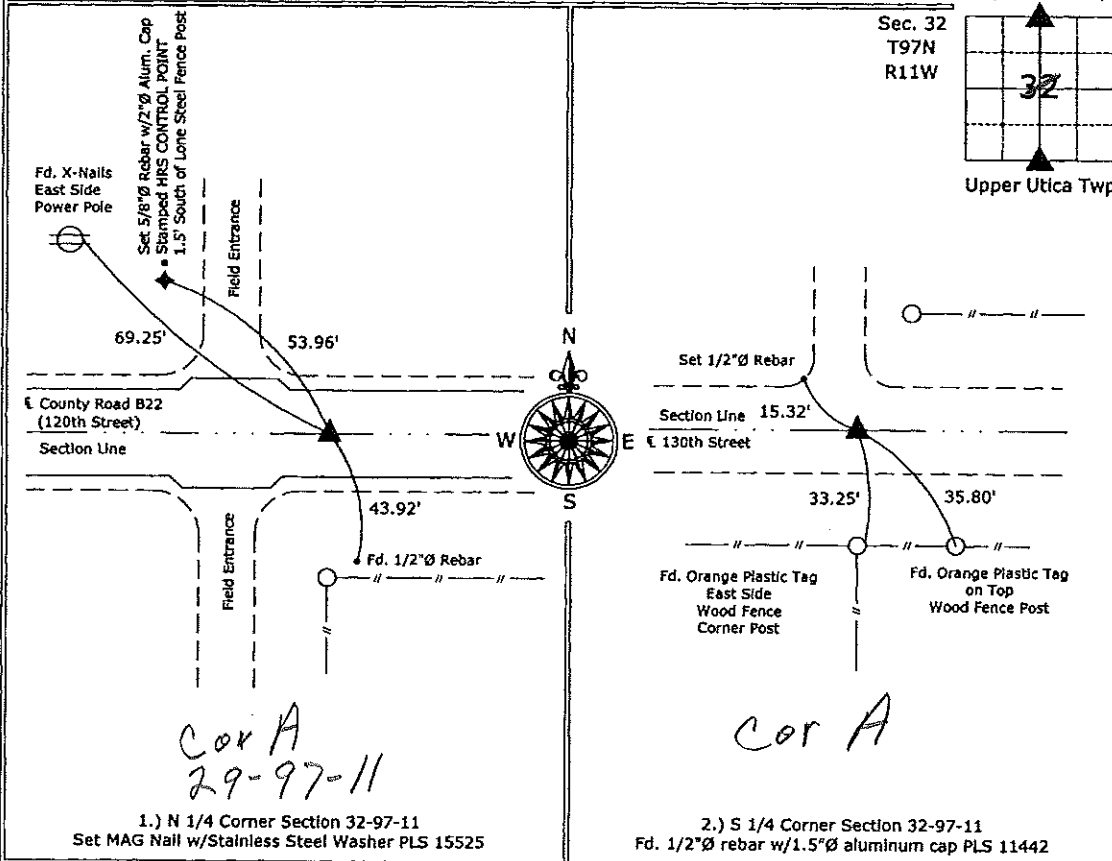
- 2.) There is no certificate on file for this corner.
- 1.) There are no longer three valid ties of record.
- 1.) There are changes to reference ties of record.
- 1.) There is change of monumentation of record.
- To clarify description of record monument (ties).

Monument Description and Remarks:

- 1.) N 1/4 Corner Section 32-97-11: Set MAG Nail w/Stainless Steel Washer PLS 15525 from ties and magnetic reading, only one tie from the original section corner certificate remains, the Chickasaw County Engineer's Office added additional ties prior to the HMA overlay project, Corner re-established utilizing those ties and the magnetic reading.
- 2.) S 1/4 Corner Section 32-97-11: Fd. 1/2"Ø rebar w/1.5"Ø aluminum cap PLS 11442, Corner recovered from information found on a survey and plat recorded as Doc. #2002-2996, on file in the Chickasaw County Recorder's Office.

PLAN - VIEW

(Show a minimum of three reference ties to durable physical objects, relevant monuments and physical conditions that will enable recovery of the corner.)



Cor A
 29-97-11

Cor A

1.) N 1/4 Corner Section 32-97-11
 Set MAG Nail w/Stainless Steel Washer PLS 15525

2.) S 1/4 Corner Section 32-97-11
 Fd. 1/2"Ø rebar w/1.5"Ø aluminum cap PLS 11442



I hereby certify that this land surveying document was prepared and the related survey work was performed by me or under my direct personal supervision and that I am a duly licensed Land Surveyor under the laws of the State of Iowa.

Paul R. Herold 8-29-08
 Paul R. Herold Date:

License number 15525
 My license renewal date is December 31, 2008.
 Sheets covered by this seal: Individual sheet only

List Corners to be Indexed			
Corners	Section	Twp.	Range
N 1/4	32	97	11
S 1/4	32	97	11

Project Number: 2008-081
 FB: Chickasaw County 3, Pgs. 1-3

File: S:\Projects\2008\2008-081\dwg\8/28/2008 06:56:49

UNITED STATES PUBLIC LAND SURVEY CORNER CERTIFICATE

OF

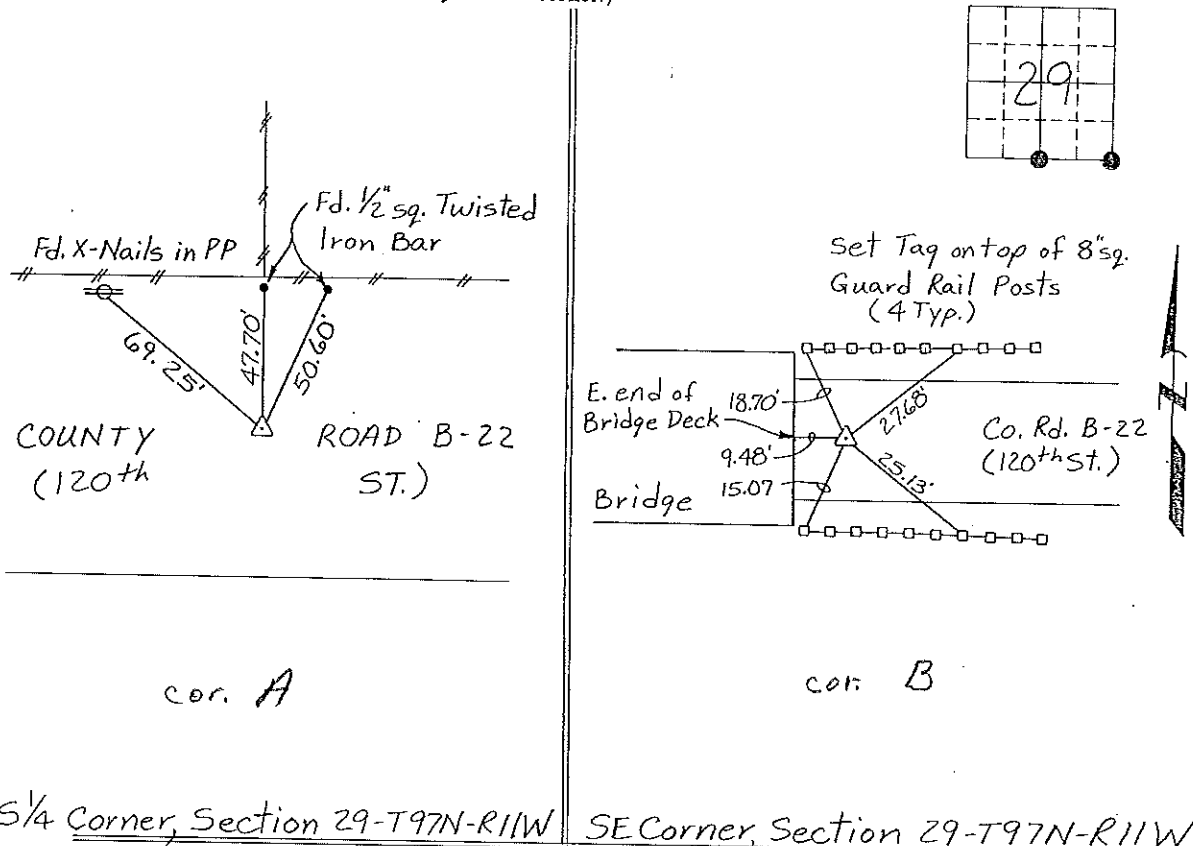
Land Survey Monuments situated in Section 29, Township 97 North, Range 11 West, of the Fifth Principal Meridian, Chickasaw County, Iowa.
 Previously recorded in None in County Recorder's Office.
(book, page, document number, etc.)

(Show reason for preparing this certificate, the evidence and detailed procedures used in establishing the corner positions and monumentation found or placed.)

Monument Description and Remarks: S¹/₄ Corner, Section 29-T97N-R11W:
Found PK Nail.
SE Corner, Section 29-T97N-R11W: Fd. PK Nail.

PLAN - VIEW

(Show a minimum of three reference ties to durable physical objects, relevant monuments and physical conditions that will enable recovery of the corner.)



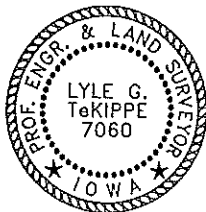
S¹/₄ Corner, Section 29-T97N-R11W SE Corner, Section 29-T97N-R11W

I hereby certify that the survey work was completed and this certificate was prepared by me or under my direct personal supervision and that I am a duly registered land surveyor under the laws of the state of Iowa.

Signature: Lyle G. TeKippe
 Lyle G. TeKippe

Date: 5-15-95 Reg. No. 7060
 My Registration Renewal Date is December 31, 1998

Seal



List Corners to be Indexed			
Corners	Section	Twp.	Range
S ¹ / ₄	29	97N	11W
Cor A	29-97-11		
SE	29	97N	11W
Cor B	29-97-11		

Placed in file
29-97-11