



Prepared by & Return to: Herold - Reicks Surveying, 10 East Main Street, New Hampton, IA 50659, Ph. 641-394-2725

### United States Public Land Survey Corner Certificate

Land Survey Monument situated in  
 Section 33, Township 97 North, Range 11 West of the Fifth Principal Meridian, Chickasaw County, Iowa.  
 On file in Document #2018-2045 in the County Recorder's office.

This certificate is being prepared in compliance with Iowa Code Chapter 355.11 because:

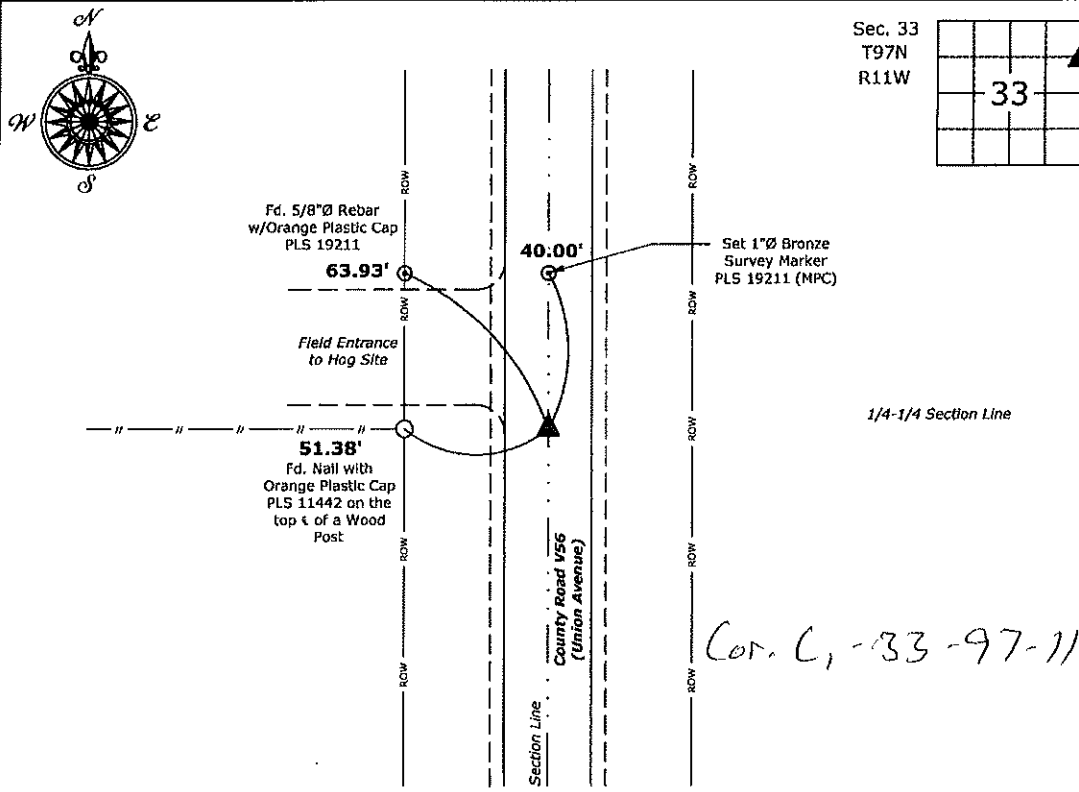
- There is no certificate on file for this corner.
- There are no longer three valid ties of record.
- There are changes to reference ties of record.
- There is change of monumentation of record.
- To clarify description of record monument (ties).

**Monument Description and Remarks:**

**Southeast Corner NE 1/4-NE 1/4:** Set 1"Ø Bronze Survey Marker PLS 19211 at previous location (Found MAG Nail with Stainless Steel Washer PLS 11442) with coordinates of the Corner obtained prior to highway reconstruction, Project No. FM-C019(89)--55-19.

### Plan View

(Show a minimum of three reference ties to durable physical objects, relevant monuments and physical conditions that will enable recovery of the corner.)



Cor. C, -33-97-11

**Southeast Corner NE 1/4-NE 1/4 of Section 33-97-11**  
 Set Ø 1"Ø Bronze Survey Marker PLS 19211



I hereby certify that this land surveying document was prepared and the related survey work was performed by me or under my direct personal supervision and that I am a duly licensed Land Surveyor under the laws of the State of Iowa.  
*Kirk D. Reicks* 6-17-20  
 Kirk D. Reicks Date:  
 License number 19211  
 My license renewal date is December 31, 2020.  
 Sheets covered by this seal: Individual sheet only

List Corner to be Indexed			
Corner	Section	Twp.	Range
SE-NE-NE	33	97	11
Project Number: 2019-810			
FB: 2019 Construction, Pgs. 14-36			

File: S:\\_Projects - NHO\County Control Systems - NHO\CHICKASAW\CHICK-7\CHICK-7 - 2020.dwg, 6/16/2020 11:13:10 AM



Prepared by: Erdman Engineering, P.C., 708 Commerce Drive, P.O. Box 246, Decorah, Iowa, (563)382-4194

UNITED STATES PUBLIC LAND SURVEY CORNER CERTIFICATE  
 OF

Land Survey Monuments situated in Section 33, Township 97 North, Range 11 West, of  
 the Fifth Principal Meridian, Chickasaw County, Iowa, Previously recorded in does not apply in the  
 County Recorder's Office.

Monument Description and Remarks:

This certificate is prepared in accordance with Section 355.11 of the Code of Iowa. No previous certificates have been filed for these corner locations.

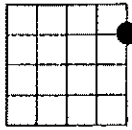
ENE 1/8 Corner: We found no record of the ENE  $\frac{1}{8}$  Corner being set. We found no evidence of a monument in the field other than the county road and a fence line running west. We found the NE Corner and the E  $\frac{1}{4}$  Corner. We set a  $\frac{1}{2}$ " diameter steel bar with 1  $\frac{1}{2}$ " aluminum cap #11442 on line and midway between the NE Corner and the E  $\frac{1}{4}$  Corner as the ENE  $\frac{1}{8}$  Corner of Section 33, Township 97 North, Range 11 West.

NE 1/16 Corner: We found no record of the NE  $\frac{1}{16}$  Corner being set. We found no evidence of a monument in the field other than a fence line running east. We found the NE Corner, N  $\frac{1}{4}$  Corner, NNE  $\frac{1}{8}$  Corner, E  $\frac{1}{8}$  Corner and the Center Section. We set the ENE  $\frac{1}{8}$  Corner and computed the location of the N  $\frac{1}{8}$  Corner. We set a  $\frac{1}{2}$ " diameter steel bar with 1  $\frac{1}{2}$ " aluminum cap #11442 at the intersection of the lines from the midpoints of the four sides of the Northeast Quarter as the NE  $\frac{1}{16}$  Corner of Section 33, Township 97 North, Range 11 West.

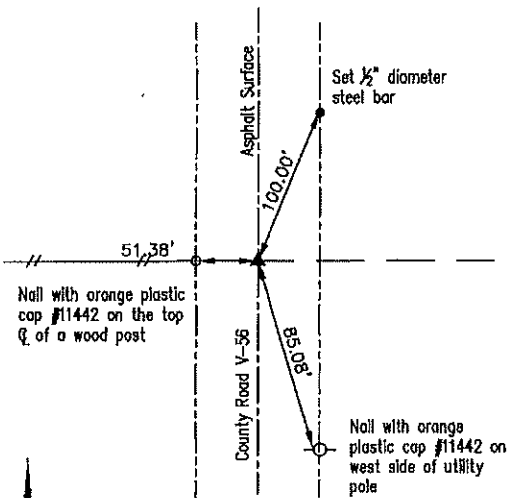
PLAN-VIEW  
 (NOT TO SCALE)

ENE 1/8 CORNER

Set  $\frac{1}{2}$ " diameter steel  
 bar with 1  $\frac{1}{2}$ " aluminum  
 cap #11442



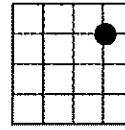
SECTION 33



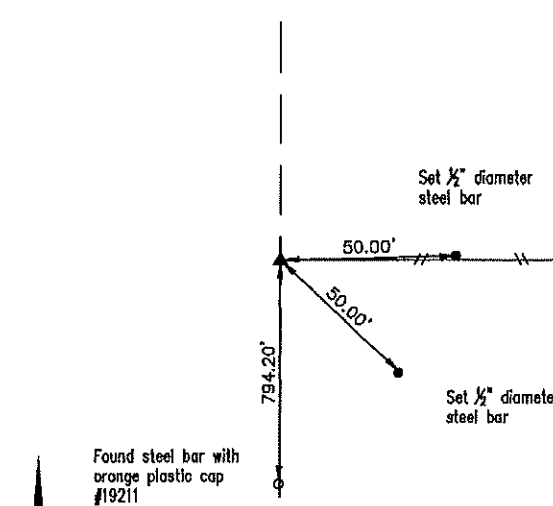
Cor C<sub>1</sub>  
 33-97-11

NE 1/16 CORNER

Set  $\frac{1}{2}$ " diameter steel  
 bar with 1  $\frac{1}{2}$ " aluminum  
 cap #11442



SECTION 33



Cor Z  
 33-97-11

I hereby certify that this land surveying document was prepared and the related survey work was performed by me or under my direct personal supervision and that I am a duly licensed Land Surveyor under the laws of the State of Iowa.

*Lindsay Erdman* 12/14/18  
 Date

Lindsay Erdman, P.E. & P.L.S.  
 Licensed Professional Land Surveyor  
 Iowa License Number 11442  
 My License renewal date is December 31, 2018  
 Pages or sheets covered by this seal: THIS SHEET ONLY

List Corner(s) to be Indexed

Corner(s)	Section	Township	Range
ENE 1/8	33	97N	11W
NE 1/16	33	97N	11W

**ERDMAN**  
**ENGINEERING, P.C.**  
 CIVIL ENGINEERING & LAND SURVEYING  
 Decorah, Iowa

