

Chickasaw Co. Recorder  
 Cindy Messersmith  
**Fee Book 2014-0680**  
 05/28/2014 @ 02:41 PM  
 SEC COR CERT # Pages: 1  
 Book: Page: # Pages: 1  
 Total Fees: \$7.00

Prepared by & Return to: Harold - Reicks Surveying, 10 East Main Street, New Hampton, IA 50659, Ph. 641-394-2725

**UNITED STATES PUBLIC LAND SURVEY CORNER CERTIFICATE**

Land Survey Monuments situated in Section 33, Township 97 North, Range 11 West of the Fifth Principal Meridian, Chickasaw County, Iowa. Previously recorded in Doc. #2006-0619 in the County Recorder's office.

This certificate is being prepared in compliance with Iowa Code Chapter 355.11 because:

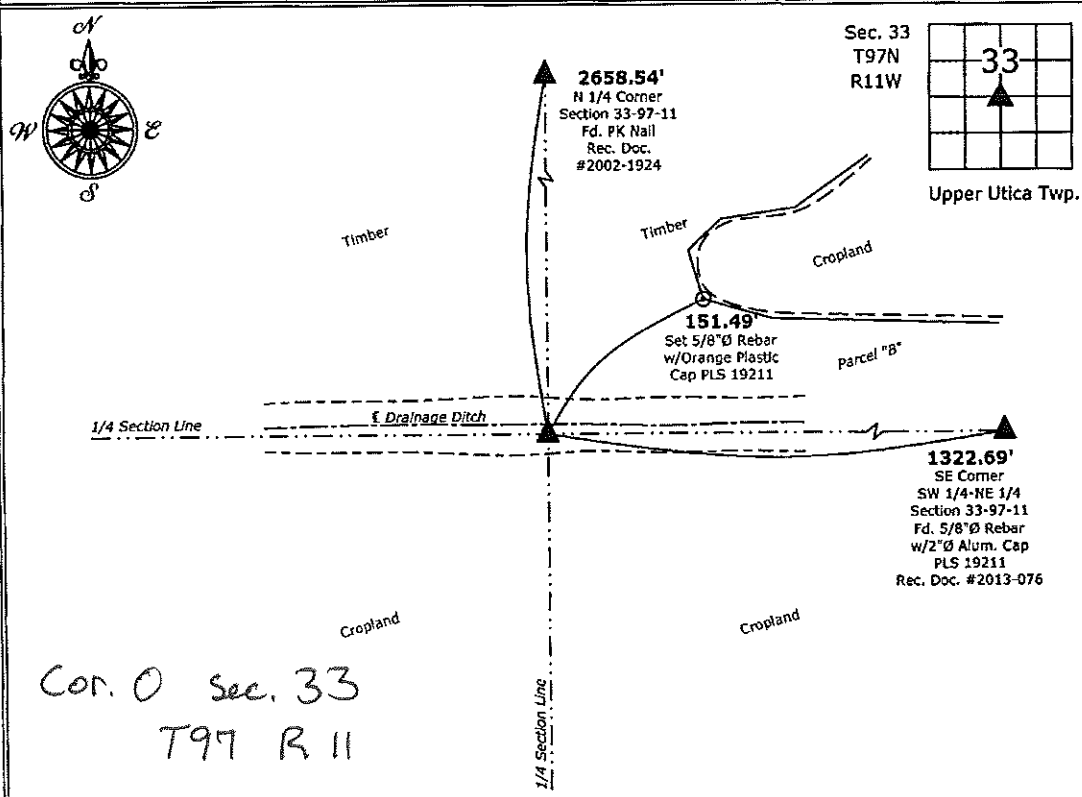
- There is no certificate on file for this corner.
- There are no longer three valid ties of record.
- There are changes to reference ties of record.
- There is change of monumentation of record.
- To clarify description of record monument (ties).

Monument Description and Remarks:

**Center of Section:** Set 5/8"Ø rebar w/2"Ø aluminum cap PLS 19211 at the record location as shown on a survey and plat recorded as Doc. #2012-2560. The adjacent landowner requested that we replace the corner because the previous monument was removed by field drainage tile construction activities.

**PLAN - VIEW**

(Show a minimum of three reference ties to durable physical objects, relevant monuments and physical conditions that will enable recovery of the corner.)



Cor. 0 sec. 33  
 T97 R 11

**Center of Section 33-97-11**  
 Set 5/8"Ø rebar w/2"Ø aluminum cap PLS 19211



I hereby certify that this land surveying document was prepared and the related survey work was performed by me or under my direct personal supervision and that I am a duly licensed Land Surveyor under the laws of the State of Iowa.  
*Kirk D. Reicks 5-28-14*  
 Kirk D. Reicks Date:  
 License number 19211  
 My license renewal date is December 31, 2014.  
 Sheets covered by this seal: Individual sheet only

List Corners to be Indexed			
Corners	Section	Twp.	Range
CTR	33	97	11
Project Number: 2012-222			
FB: Chickasaw, Pg. 17			

File: S:\\_CAD Projects\County Control Systems\CHICKASAW\CHICK-7.dwg, 5/14/2014 8:51:47 AM

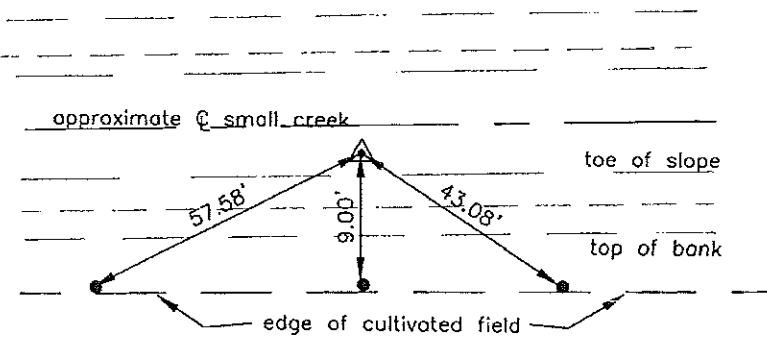
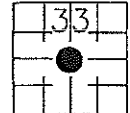
Prepared by: Erdman Engineering, P.C., 708 Commerce Drive, P.O. Box 246, Decorah, Iowa 52101 (563) 382-4194

United States Public Land Survey Corner Certificate  
 of

Land Survey Monuments situated in Section 33, Township 97, Range 11 West of  
 the 5th Principal Meridian in Chickasaw County, Iowa. Previously recorded in  
does not apply in the county Recorder's Office.

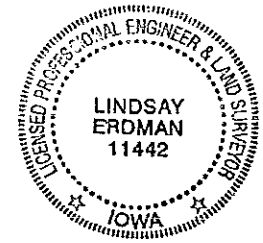
Monument Description and Remarks: This certificate is prepared in accordance with  
 Section 193C of the Code of Iowa. No previous certificate has been filed for this  
 corner location. We found no record of the Center Section being set. we found no  
 evidence of a monument in the field. We found the W 1/4 Corner, N 1/4 Corner, S 1/4 Corner  
 and the E 1/4 Corner. From these monuments we set a 3/4" diameter steel bar with 2"  
 aluminum cap #11442 at the intersection of the lines from the 1/4 Corners as the  
 Center of Section 33, Township 97 North, Range 11 West.

Plan-View



All ties are 3/4" diameter  
 steel pipes set near top  
 of bank at edge of  
 cultivated field

cor 0



I hereby certify that this land surveying document  
 was prepared and the related survey work was  
 performed by me or under my direct personal  
 supervision and that I am a duly licensed Land  
 Surveyor under the laws of the State of Iowa.

Signature Lindsay Erdman  
 Lindsay Erdman, P.E. and P.L.S. Iowa License Number 11442

Date: 3/24/06

My license renewal date is December 31, 2006

Corner(s) to be Indexed

Corner	Section	Township	Range
C.S.	33	97	11