



Prepared by & Return to: Herold - Reicks Surveying, 10 East Main Street, New Hampton, IA 50659, Ph. 641-394-2725

United States Public Land Survey Corner Certificate

Land Survey Monument situated in
 Section 34, Township 97 North, Range 11 West of the Fifth Principal Meridian, Chickasaw County, Iowa.
 On file in Document #2002-0204 in the County Recorder's office.

This certificate is being prepared in compliance with Iowa Code Chapter 355.11 because:

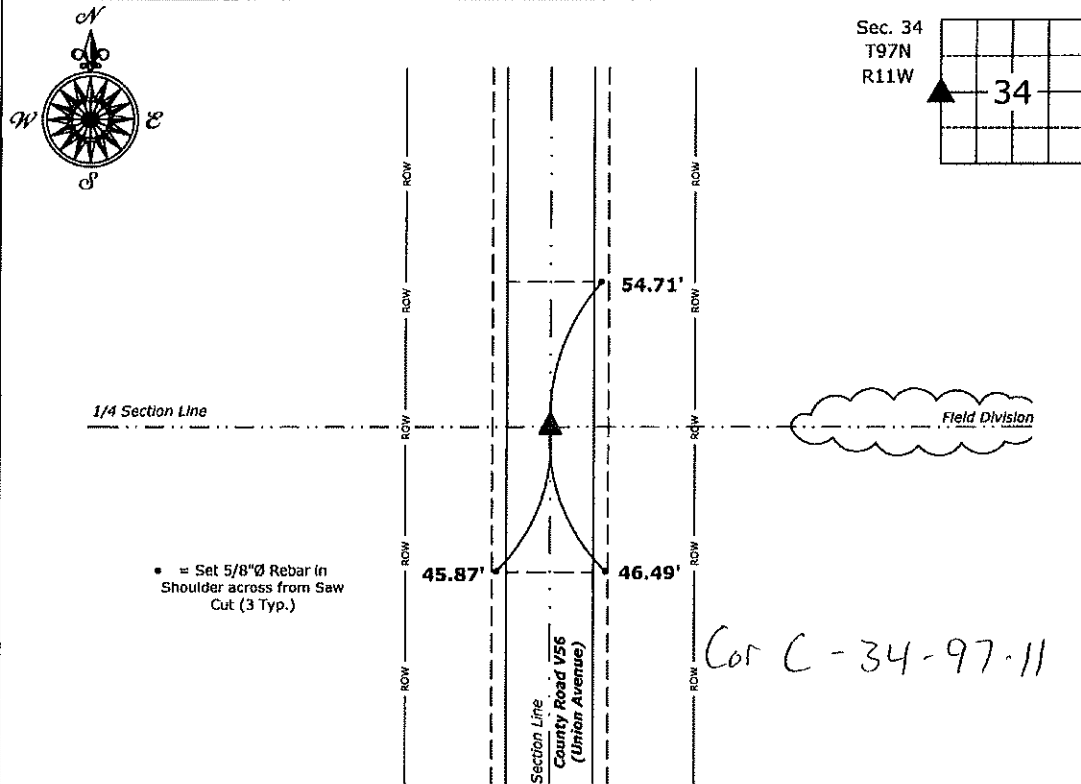
- There is no certificate on file for this corner.
- There are no longer three valid ties of record.
- There are changes to reference ties of record.
- There is change of monumentation of record.
- To clarify description of record monument (ties).

Monument Description and Remarks:

West 1/4 Corner: Set 1"Ø Bronze Survey Marker PLS 19211 at previous location (Found PK Nail) with coordinates of the Corner obtained prior to highway reconstruction, Project No. FM-C019(89)--55-19.

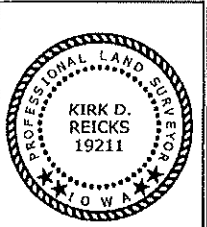
Plan View

(Show a minimum of three reference ties to durable physical objects, relevant monuments and physical conditions that will enable recovery of the corner.)



West 1/4 Corner of Section 34-97-11
 Set 1"Ø Bronze Survey Marker PLS 19211

Cor C - 34 - 97 - 11



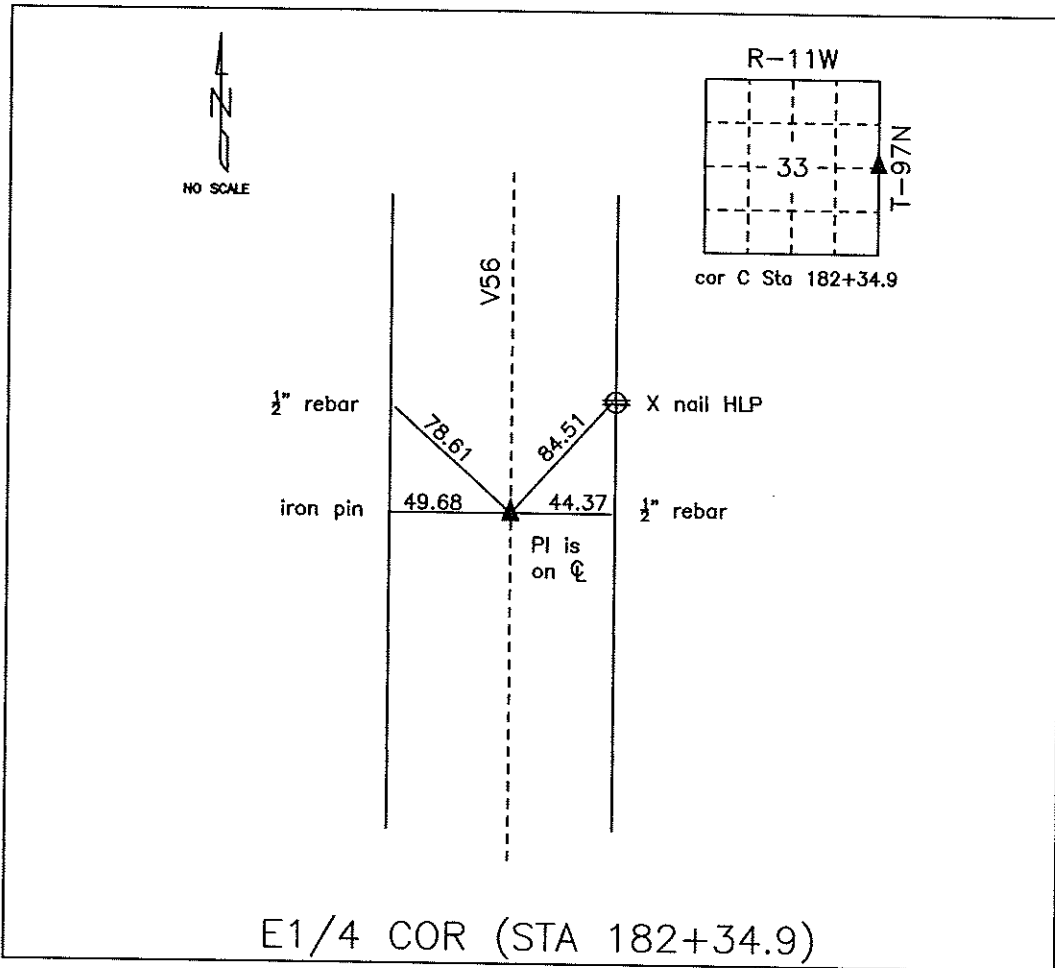
I hereby certify that this land surveying document was prepared and the related survey work was performed by me or under my direct personal supervision and that I am a duly licensed Land Surveyor under the laws of the State of Iowa.
Kirk D. Reicks 6-17-20
 Kirk D. Reicks Date:
 License number 19211
 My license renewal date is December 31, 2020.
 Sheets covered by this seal: Individual sheet only

List Corner to be Indexed			
Corner	Section	Twp.	Range
W 1/4	34	97	11
Project Number: 2019-810			
FB: 2019 Construction, Pgs. 14-36			

File: S:_projects - NHO\County Control Systems - NHO\CHICKASAW\CHICK-7-2020.dwg, 6/16/2020 11:12:58 AM

COUNTY ENGINEER'S SECTION CORNER PRESERVATION RECORD

LAND SURVEY MONUMENT LOCATED IN SECTION 33, TOWNSHIP 97 N
NORTH, RANGE 11 W, OF THE 5TH P.M. Chickasaw COUNTY, IOWA
PREVIOUSLY RECORDED Bk 2002 - Pg 0204



MONUMENT DESCRIPTION AND NARRATIVE Found PK nail in HMA mat

From Chickasaw County Project plans SN-188(9) found PI on center line. Information was also found
in the county engineer tie book.

All ties are GPS surveyed.

I AM NOT A REGISTERED LAND SURVEYOR UNDER THE LAWS OF THE STATE OF IOWA

JIM FOSTER CHICKASAW CO. DATE: 08/03/10

Prepared by & Return to: Harold - Reicks Surveying, 10 East Main Street, New Hampton, IA 50658, Ph. 641-394-2725

UNITED STATES PUBLIC LAND SURVEY CORNER CERTIFICATE

Land Survey Monuments situated in Section ²⁸ 33, Township 97 North, Range 11 West of the Fifth Principal Meridian, Chickasaw County, Iowa. Not previously recorded in the County Recorder's office.

This certificate is being prepared in compliance with Iowa Code Chapter 355.11 because:

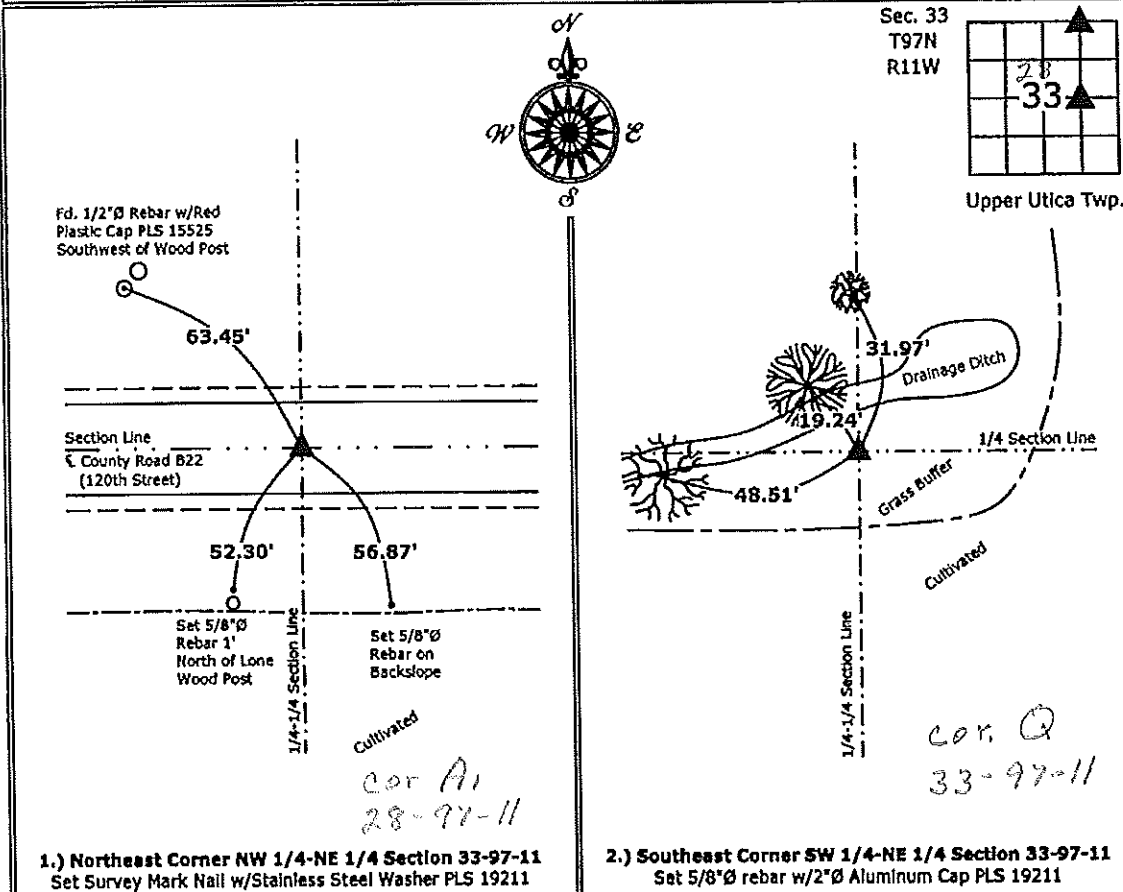
1 & 2 There is no certificate on file for this corner.
 There are no longer three valid ties of record.
 There are changes to reference ties of record.
 There is change of monumentation of record.
 To clarify description of record monument (ties).

Monument Description and Remarks:

- Northeast Corner NW 1/4-NE 1/4:** Set Survey Mark Nail w/Stainless Steel Washer PLS 19211 equidistant and online between the North 1/4 and Northeast Corners of Section 33.
- Southeast Corner SW 1/4-NE 1/4:** Set 5/8"Ø rebar with 2"Ø Aluminum Cap PLS 19211 equidistant and online between the East 1/4 Corner and Center of Section 33.

PLAN - VIEW

(Show a minimum of three reference ties to durable physical objects, relevant monuments and physical conditions that will enable recovery of the corner.)



1.) Northeast Corner NW 1/4-NE 1/4 Section 33-97-11
 Set Survey Mark Nail w/Stainless Steel Washer PLS 19211

2.) Southeast Corner SW 1/4-NE 1/4 Section 33-97-11
 Set 5/8"Ø rebar w/2"Ø Aluminum Cap PLS 19211



I hereby certify that this land surveying document was prepared and the related survey work was performed by me or under my direct personal supervision and that I am a duly licensed Land Surveyor under the laws of the State of Iowa.

Kirk D. Reicks 1-11-13
 Kirk D. Reicks Date:
 License number 19211

My license renewal date is December 31, 2014.

List Corners to be Indexed			
Corners	Section	Twp.	Range
NE-NW-NE	33	97	11
SE-SW-NE	33	97	11

Project Number: 2012-222

2002 JAN 23 AM 9 01

CINDY MESSERSMITH
COUNTY RECORDER

Corner C:
Section 33-97-11
As referred to in
Engr. Tie Book

TEKIPPE ENGINEERING, P.C., 128 South Vine Street, West Union, Iowa 52175 Phone (563) 422-5131

UNITED STATES PUBLIC LAND SURVEY CORNER CERTIFICATE

OF 33

Land Survey Monuments situated in Section 34, Township 97 North, Range 11 West of the Fifth Principal Meridian, CHICKASAW County, Iowa.

Previously recorded in none in County Recorder's Office.
(book, page, document number, etc.)

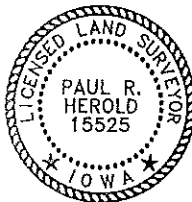
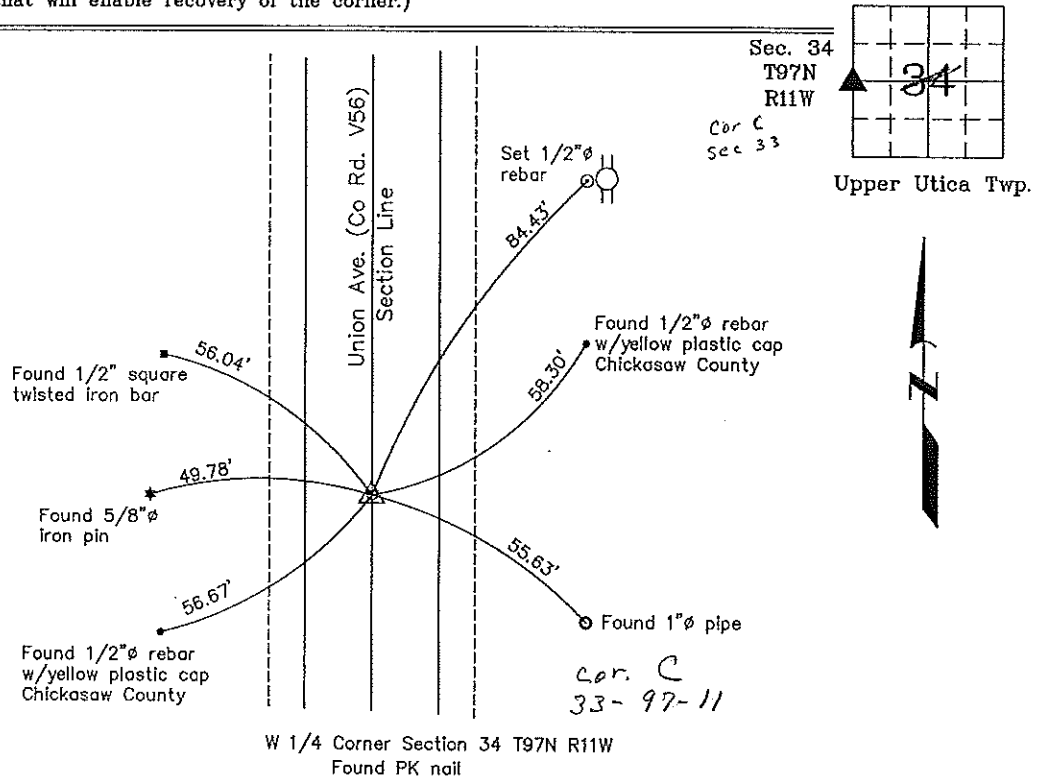
(Show reason for preparing this certificate, the evidence and detailed procedures used in establishing the corner positions and monumentation found or placed.)

Monument Description and Remarks: W 1/4 Corner Section 34 T97N R11W: Found PK nail with information obtained from the Chickasaw County Engineer's Office in Field Book Upper Utica Twp., Section 33, Corner 'C'.

PLAN - VIEW

Project Number 01245.LS
FB. 461 PG. 54-58

(Show a minimum of three reference ties to durable physical objects, relevant monuments and physical conditions that will enable recovery of the corner.)



I hereby certify that this land surveying document was prepared and the related survey work was performed by me or under my direct personal supervision and that I am a duly licensed Land Surveyor under the laws of the State of Iowa.

Paul R. Herold 1-22-02
Date

Paul R. Herold
License number 15525
My license renewal date is December 31, 2002.
Sheets covered by this seal: Individual

List Corners to be Indexed			
Corners	Section	Twp.	Range
W 1/4	34	97N	11W

Entered 1-29-02

County Engineer's