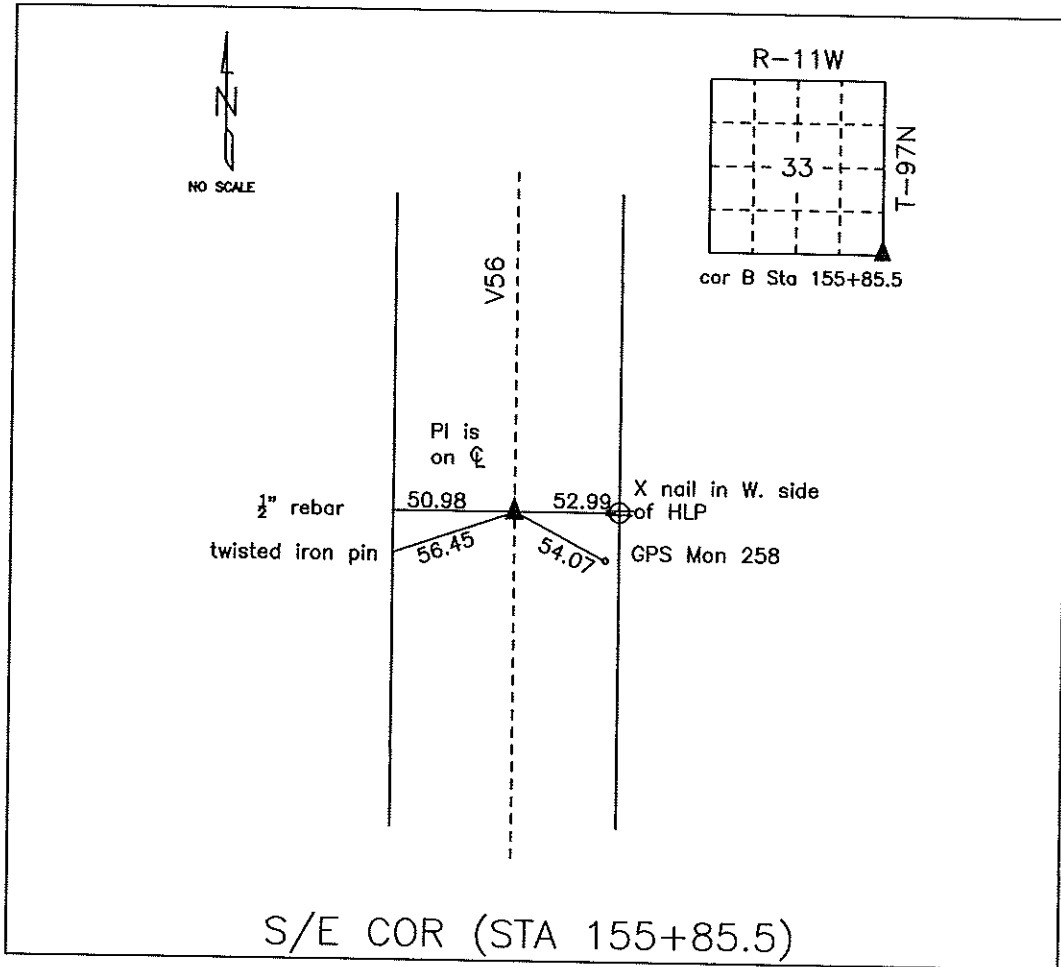


COUNTY ENGINEER'S SECTION CORNER PRESERVATION RECORD

LAND SURVEY MONUMENT LOCATED IN SECTION 33, TOWNSHIP 97 N
 NORTH, RANGE 11 W, OF THE 5TH P.M. Chickasaw COUNTY, IOWA
 PREVIOUSLY RECORDED Bk 2003 - Pg 0283



MONUMENT DESCRIPTION AND NARRATIVE Found PK nail in HMA mat

From Chickasaw County Project plans SN-188(9) found PI on center line. Information was also found
in the county engineer tie book.

All ties are GPS surveyed.

I AM NOT A REGISTERED LAND SURVEYOR UNDER THE LAWS OF THE STATE OF IOWA

JIM FOSTER CHICKASAW CO. DATE: 08/03/10