

TeKIPPE ENGINEERING, P.C., 128 South Vine Street, West Union, Iowa 52175 Phone (563) 422-5131

UNITED STATES PUBLIC LAND SURVEY CORNER CERTIFICATE
 OF

Land Survey Monuments situated in Section 28, Township 97 North, Range 11 West of the Fifth Principal Meridian, CHICKASAW County, Iowa.
 Previously recorded in none in County Recorder's Office.
 (book, page, document number, etc.)

(Show reason for preparing this certificate, the evidence and detailed procedures used in establishing the corner positions and monumentation found or placed.)

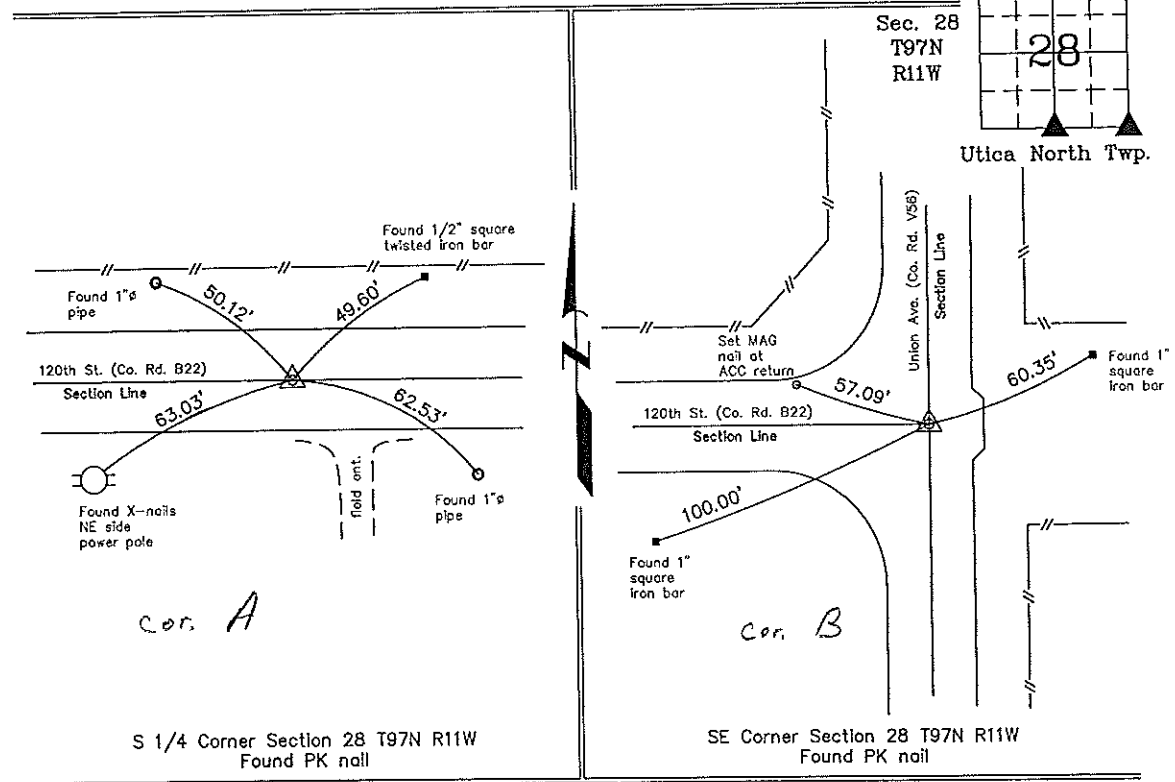
Monument Description and Remarks: S 1/4 Corner Section 28 T97N R11W: Found PK nail with information obtained from the Chickasaw County Engineer's Office in Field Book Utica North Twp. Corner Ties, Section 28, Corner 'A'.

SE Corner Section 28 T97N R11W: Found PK nail with information obtained from the Chickasaw County Engineer's Office in Field Book Utica North Twp. Corner Ties, Section 28, Corner 'B'.

PLAN - VIEW

Project Number 02179.1S
 FB. 46J PG. 22-23

(Show a minimum of three reference ties to durable physical objects, relevant monuments and physical conditions that will enable recovery of the corner.)



I hereby certify that this land surveying document was prepared and the related survey work was performed by me or under my direct personal supervision and that I am a duly licensed Land Surveyor under the laws of the State of Iowa.
Paul R. Herold 8-7-02
 Paul R. Herold Date
 License number 15525
 My license renewal date is December 31, 2002.
 Sheets covered by this seal: Individual

List Corners to be Indexed			
Corners	Section	Twp.	Range
S 1/4	28	97N	11W
SE	28	97N	11W

File 8-7-02
 X:\Section Corners\Sec. 28\28-97-11wy.dwg