

Prepared by & Return to: Harold - Reicks Surveying, 10 East Main Street, New Hampton, IA 50658, Ph. 641-954-2725

UNITED STATES PUBLIC LAND SURVEY CORNER CERTIFICATE

Land Survey Monuments situated in Section ²⁸33, Township 97 North, Range 11 West of the Fifth Principal Meridian, Chickasaw County, Iowa. Not previously recorded in the County Recorder's office.

This certificate is being prepared in compliance with Iowa Code Chapter 355.11 because:

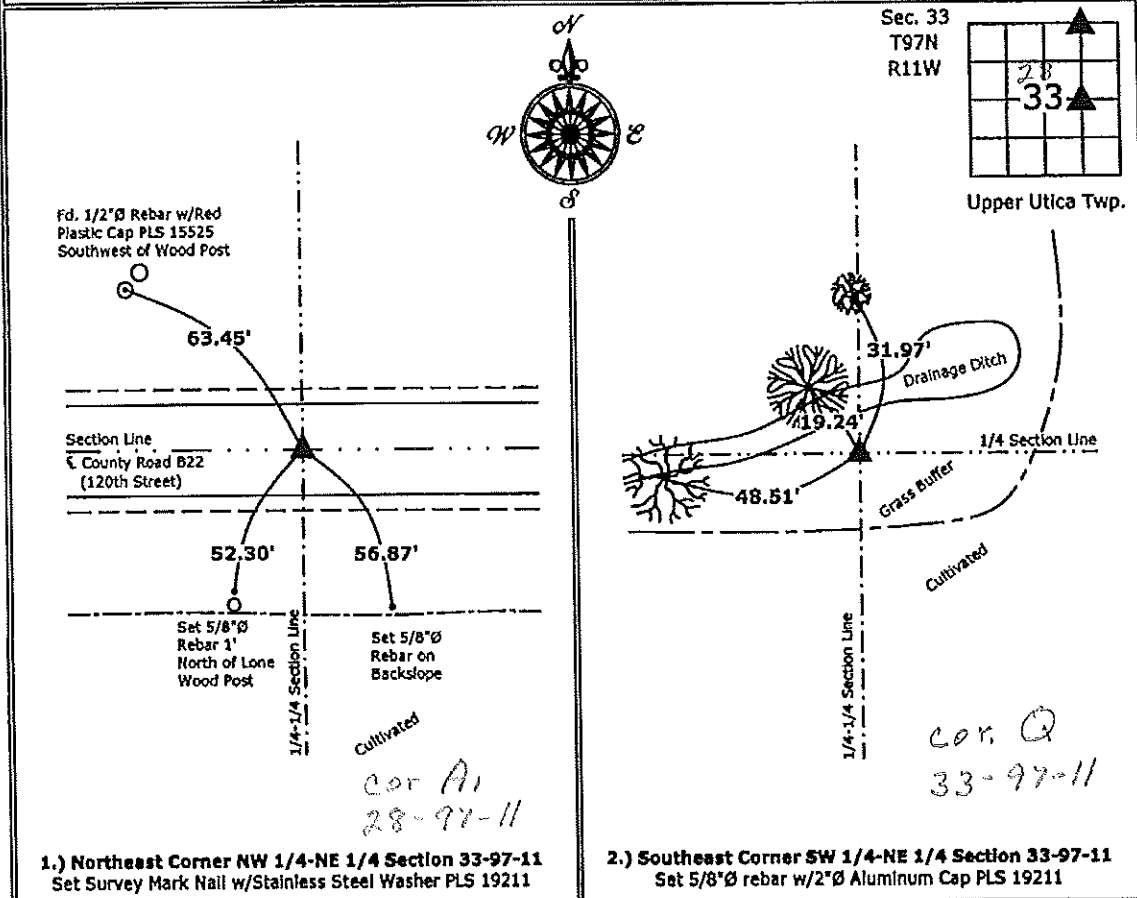
1 & 2 There is no certificate on file for this corner.
 There are no longer three valid ties of record.
 There are changes to reference ties of record.
 There is change of monumentation of record.
 To clarify description of record monument (ties).

Monument Description and Remarks:

- Northeast Corner NW 1/4-NE 1/4:** Set Survey Mark Nail w/Stainless Steel Washer PLS 19211 equidistant and online between the North 1/4 and Northeast Corners of Section 33.
- Southeast Corner SW 1/4-NE 1/4:** Set 5/8"Ø rebar with 2"Ø Aluminum Cap PLS 19211 equidistant and online between the East 1/4 Corner and Center of Section 33.

PLAN - VIEW

(Show a minimum of three reference ties to durable physical objects, relevant monuments and physical conditions that will enable recovery of the corner.)



1.) Northeast Corner NW 1/4-NE 1/4 Section 33-97-11
 Set Survey Mark Nail w/Stainless Steel Washer PLS 19211

2.) Southeast Corner SW 1/4-NE 1/4 Section 33-97-11
 Set 5/8"Ø rebar w/2"Ø Aluminum Cap PLS 19211



I hereby certify that this land surveying document was prepared and the related survey work was performed by me or under my direct personal supervision and that I am a duly licensed Land Surveyor under the laws of the State of Iowa.

Kirk D. Reicks 1-11-13
 Kirk D. Reicks Date:

License number 19211
 My license renewal date is December 31, 2014.

List Corners to be Indexed			
Corners	Section	Twp.	Range
NE-NW-NE	33	97	11
SE-SW-NE	33	97	11

Project Number: 2012-222