

prepared by & Return to: Harold - Reicks Surveying, 10 East Main Street, New Hampton, IA 50659, Ph. 641-394-2725

### UNITED STATES PUBLIC LAND SURVEY CORNER CERTIFICATE

Land Survey Monuments situated in Section **33**, Township **97 North**, Range **11 West** of the Fifth Principal Meridian, **Chickasaw** County, Iowa. Not previously recorded in the County Recorder's office.

This certificate is being prepared in compliance with Iowa Code Chapter 355.11 because:

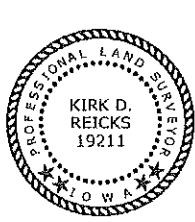
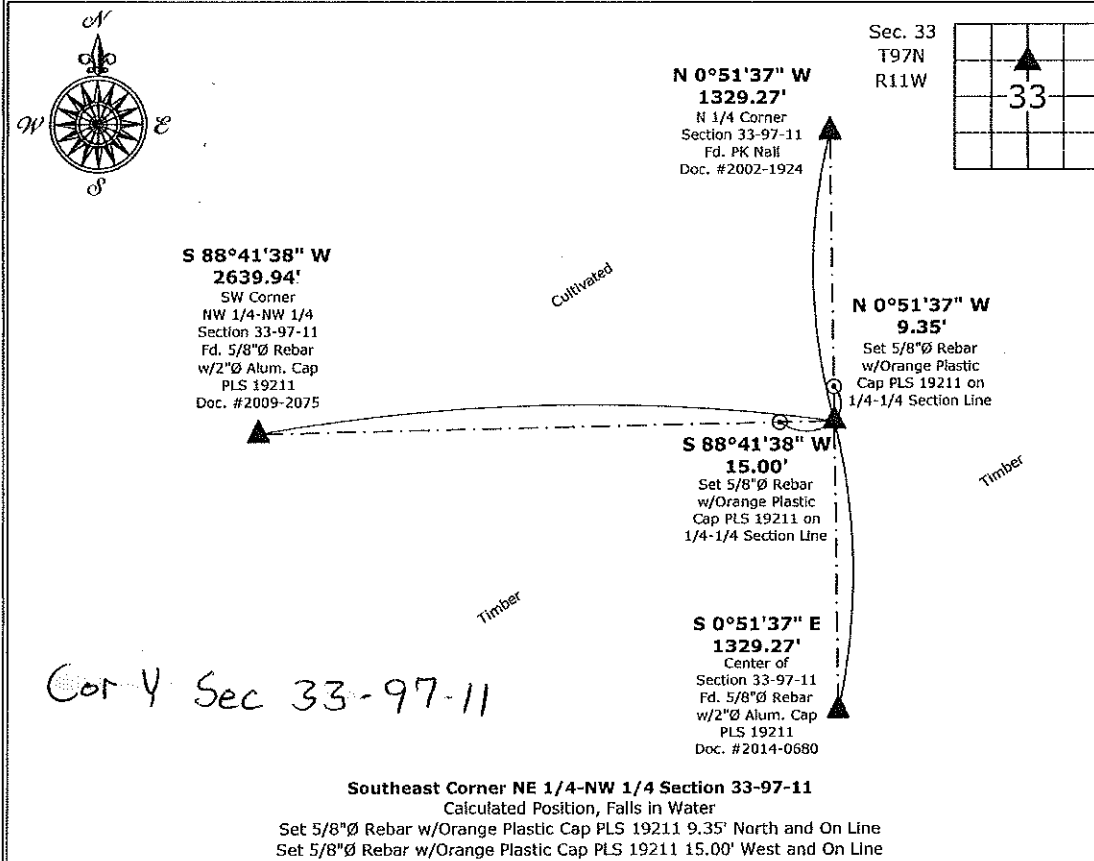
- There is no certificate on file for this corner.
- There are no longer three valid ties of record.
- There are changes to reference ties of record.
- There is change of monumentation of record.
- To clarify description of record monument (ties).

Monument Description and Remarks:

**Southeast Corner NE 1/4-NW:** Calculated Position equidistant and on line between the North 1/4 Corner and Center of said Section. Position Falls in Water. Set 5/8"Ø rebar w/orange plastic cap PLS 19211 9.35' North and On Line and 15.00' West and On Line both as witness to said Corner.

#### PLAN - VIEW

(Show a minimum of three reference ties to durable physical objects, relevant monuments and physical conditions that will enable recovery of the corner.)



I hereby certify that this land surveying document was prepared and the related survey work was performed by me or under my direct personal supervision and that I am a duly licensed Land Surveyor under the laws of the State of Iowa.

*Kirk D. Reicks 7-18-16*  
 Kirk D. Reicks Date:  
 License number 19211  
 My license renewal date is December 31, 2016.  
 Sheets covered by this seal: Individual sheet only

List Corners to be Indexed			
Corners	Section	Twp.	Range
SE-NE-NW	33	97	11
Project Number: 2016-063			
FB: Chickasaw County 7, Pg. 62			

File: S:\\_CSD Projects\County Control Systems\CHICKASAW\CHICK-7\CHICK-7.dwg, 7/14/2016 12:15:45 PM