

Corner A:
 Section 27-97-11
 As recorded to in
 Engg. Field Book

FILED 2002-0200
 RECORDER'S OFFICE
 CHICKASAW COUNTY, IOWA
 2002 JAN 23 AM 9 00
 CINDY MESSERSMITH
 COUNTY RECORDER

TEKIPPE ENGINEERING, P.C., 128 South Vine Street, West Union, Iowa 52175 Phone (563) 422-6131

UNITED STATES PUBLIC LAND SURVEY CORNER CERTIFICATE

OF

Land Survey Monuments situated in Section 34, Township 97 North, Range 11 West of the Fifth Principal Meridian, CHICKASAW County, Iowa.
 Previously recorded in none in County Recorder's Office.
(book, page, document number, etc.)

(Show reason for preparing this certificate, the evidence and detailed procedures used in establishing the corner positions and monumentation found or placed.)

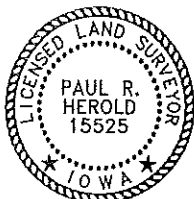
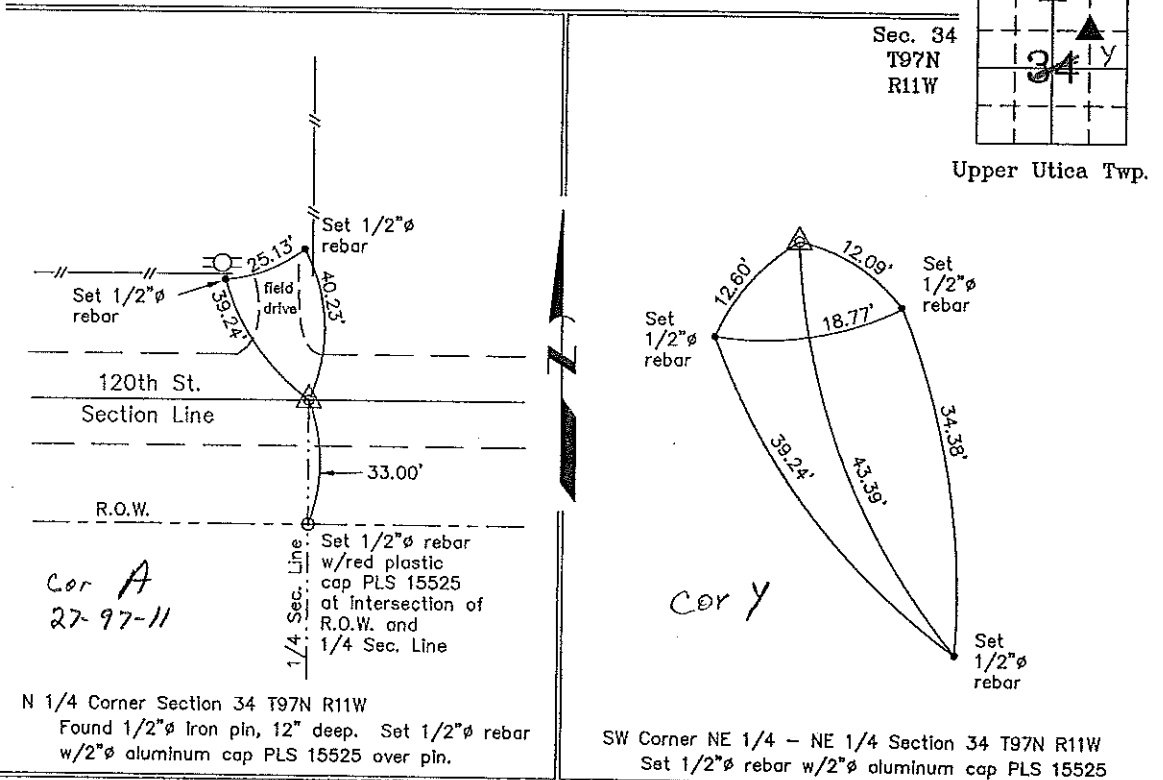
Monument Description and Remarks: N 1/4 Corner Section 34 T97N R11W: Found 1/2"Ø iron pin, 12" deep, with information obtained from the Chickasaw County Engineer's Office in Field Book Upper Utica Twp., Section 27, Corner 'A'. Set 1/2"Ø rebar w/2"Ø aluminum cap PLS 15525 over pin.

SW Corner NE 1/4 - NE 1/4 Section 34 T97N R11W: Set 1/2"Ø rebar w/2"Ø aluminum cap PLS 15525 at the intersection of 1/4-1/4 Section Lines after the standard mathematical subdivision of the Section.

PLAN - VIEW

Project Number 01245.LS
 FB. 461 PG. 54-58

(Show a minimum of three reference ties to durable physical objects, relevant monuments and physical conditions that will enable recovery of the corner.)



I hereby certify that this land surveying document was prepared and the related survey work was performed by me or under my direct personal supervision and that I am a duly licensed Land Surveyor under the laws of the State of Iowa.

Paul R. Herold 1-22-02
 Paul R. Herold Date
 License number 15525
 My license renewal date is December 31, 2002.
 Sheets covered by this seal: Individual

List Corners to be Indexed			
Corners	Section	Twp.	Range
N 1/4	34	97N	11W
SW-NE-NE	34	97N	11W

Entered 1-29-02

County Engineers
 Copy