

Corner A
 Section 26-97-11
 As referred to in
 Engr. Tax Book

FILED 2002 = 2055
 RECORDER'S OFFICE
 CHICKASAW COUNTY, IOWA
 2002 AUG 26 AM 9 27
 CHIDY MESSERSMITH
 COUNTY RECORDER

TEKIPPE ENGINEERING, P.C., 128 South Vine Street, West Union, Iowa 52175 Phone (663) 422-5131

UNITED STATES PUBLIC LAND SURVEY CORNER CERTIFICATE

OF 26
 Land Survey Monuments situated in Section 25, Township 97 North, Range 11 West of the Fifth Principal Meridian, CHICKASAW County, Iowa.
 Previously recorded in none in County Recorder's Office.
 (book, page, document number, etc.)

(Show reason for preparing this certificate, the evidence and detailed procedures used in establishing the corner positions and monumentation found or placed.)

Monument Description and Remarks: N 1/4 Corner Section 35 T97N R11W: Found 1/2" iron pin.

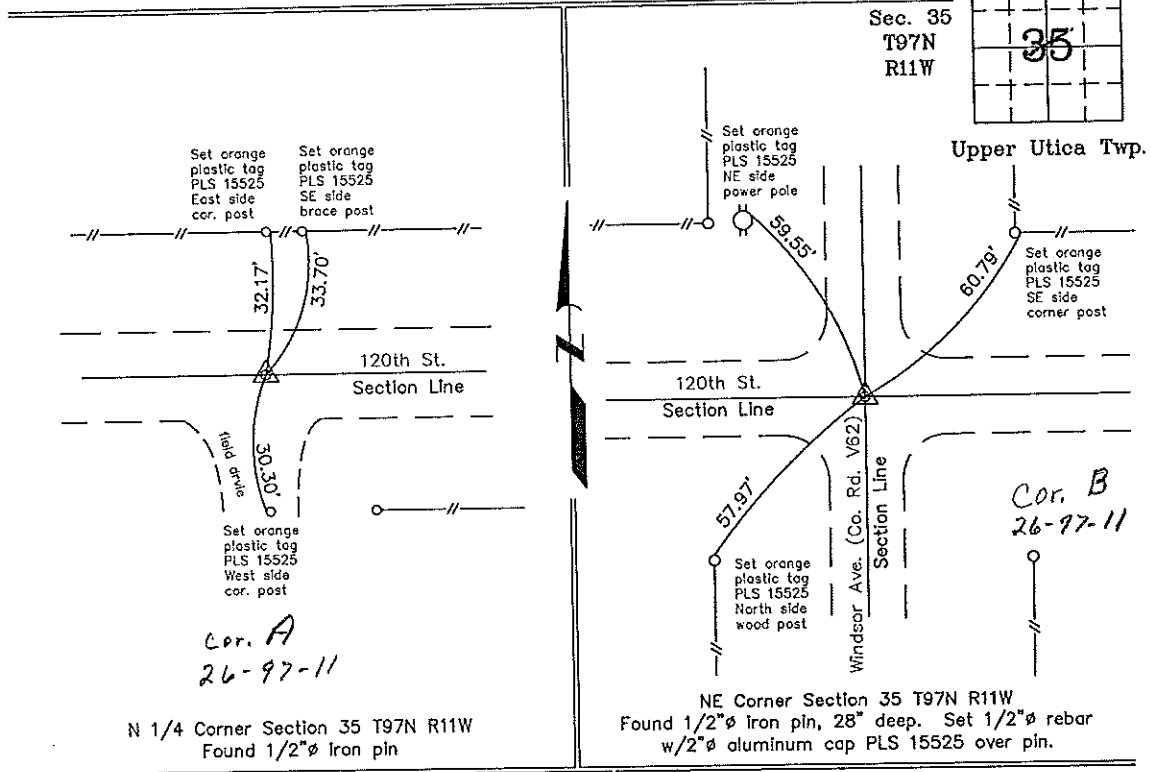
NE Corner Section 35 T97N R11W: Found 1/2" iron pin, 28" deep. Set 1/2" rebar w/2" aluminum cap PLS 15525 over pin.

NOTE: Both Corners were found with information obtained from a Survey and Plat made by L. P. Erdman recorded in the Chickasaw County Recorder's Office, September 29, 1978, in Book 118, Page 308.

PLAN - VIEW

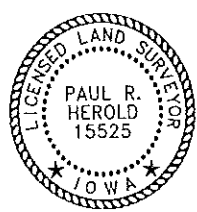
Project Number 02198.1S
 FB. 461 PG. 77-78

(Show a minimum of three reference ties to durable physical objects, relevant monuments and physical conditions that will enable recovery of the corner.)



N 1/4 Corner Section 35 T97N R11W
 Found 1/2" iron pin

NE Corner Section 35 T97N R11W
 Found 1/2" iron pin, 28" deep. Set 1/2" rebar w/2" aluminum cap PLS 15525 over pin.



I hereby certify that this land surveying document was prepared and the related survey work was performed by me or under my direct personal supervision and that I am a duly licensed Land Surveyor under the laws of the State of Iowa.
 Paul R. Herold Date 8-22-02
 License number 15525
 My license renewal date is December 31, 2002.
 Sheets covered by this seal: Individual

List Corners to be Indexed			
Corners	Section	Twp.	Range
N 1/4	35	97N	11W
NE	35 25	97N	11W

Filed 9-4-02
 X:\Section Corners\Sec. 35\35-97-11ce.dwg

County Engineer's
 Seal