

Prepared by & Return to: Herold - Reicks Surveying, 10 East Main Street, New Hampton, IA 50659, Ph. 641-394-2725

### UNITED STATES PUBLIC LAND SURVEY CORNER CERTIFICATE

Land Survey Monuments situated in Section 36, Township 97 North, Range 11 West of the Fifth Principal Meridian, Chickasaw County, Iowa. 1.) Previously recorded in Doc. #2005-2063 in the County Recorder's office. 2.) Not previously recorded in the County Recorder's office.

This certificate is being prepared in compliance with Iowa Code Chapter 355.11 because:

- 2 There is no certificate on file for this corner.
- There are no longer three valid ties of record.
- There are changes to reference ties of record.
- 1 There is change of monumentation of record.
- To clarify description of record monument (ties).

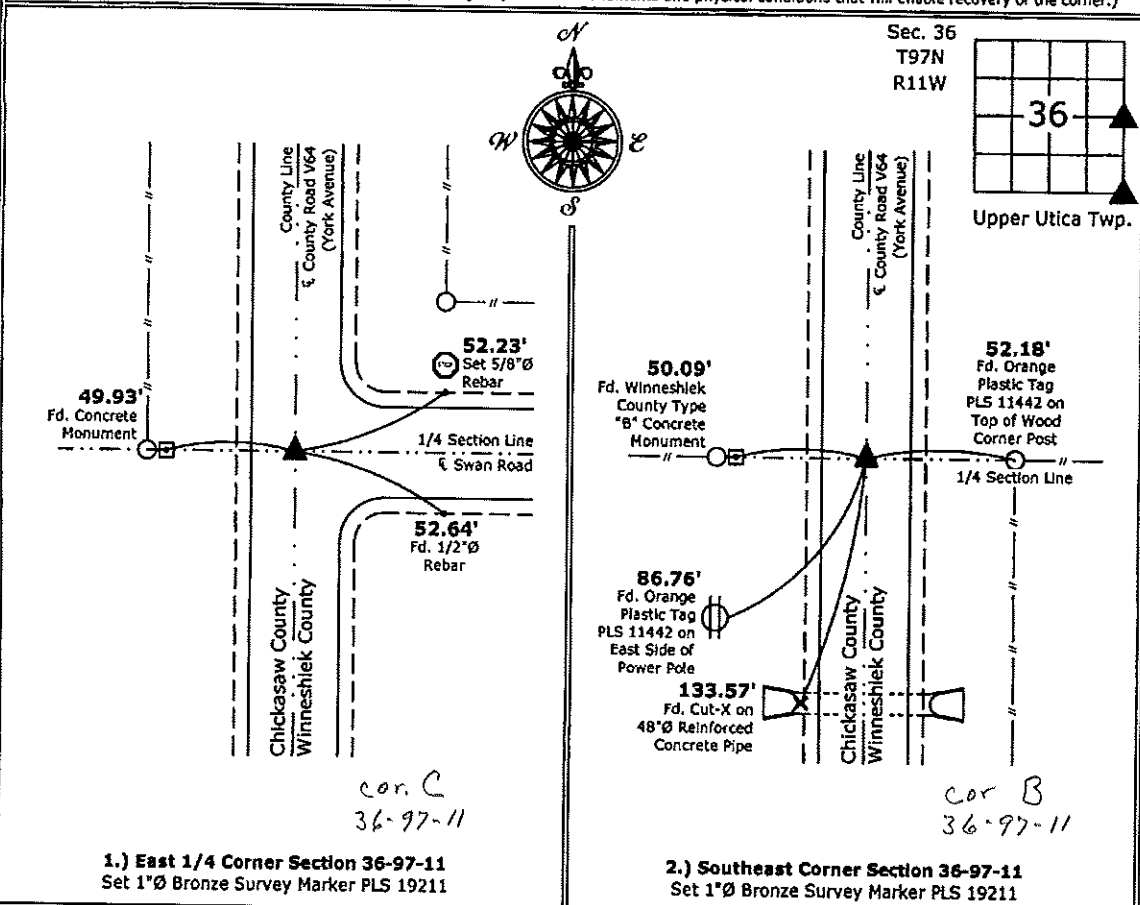
**Monument Description and Remarks:**

**1.) East 1/4 Corner:** Set 1"Ø Bronze Survey Marker PLS 19211 at previous location (Fd. Hinge Nail) by means of coordinates obtained prior to highway reconstruction, Project #STP-S-CO96-(99)--5E-96.

**2.) Southeast Corner:** Set 1"Ø Bronze Survey Marker PLS 19211 at previous location (Fd. Cut-X) by means of coordinates obtained prior to highway reconstruction, Project #STP-S-CO96-(99)--5E-96.

#### PLAN - VIEW

(Show a minimum of three reference ties to durable physical objects, relevant monuments and physical conditions that will enable recovery of the corner.)



I hereby certify that this land surveying document was prepared and the related survey work was performed by me or under my direct personal supervision and that I am a duly licensed Land Surveyor under the laws of the State of Iowa.

*Kirk D. Reicks 9-11-13*  
 Kirk D. Reicks Date:  
 License number 19211  
 My license renewal date is December 31, 2014.  
 Sheets covered by this seal: Individual sheet only

List Corners to be Indexed			
Corners	Section	Twp.	Range
E 1/4	36	97	11
SE	36	97	11

Project Number: 2013-004  
 FB: Chickasaw County 4, Pgs. 68-69

File: S:\\_C3D Projects\2013\2013-004 V64\2013-004.dwg, 9/5/2013 3:33:43 PM

Corner B:  
 Section 25-97-11  
 As referred to in  
 Engr. Title Book.

FILED 2005 - 2063  
 RECORDER'S OFFICE  
 CHICKASAW COUNTY, IOWA  
*Fee \$700*  
 2005 SEP 21 AM 8 36  
 CINDY HEDGERSMITH  
 COUNTY RECORDER

TeKIPPE ENGINEERING, P.C., 128 South Vine Street, West Union, Iowa 52175 Phone (683) 422-5131

UNITED STATES PUBLIC LAND SURVEY CORNER CERTIFICATE

OF  
 Land Survey Monuments situated in Section 36, Township 97 North, Range  
11 West of the Fifth Principal Meridian, CHICKASAW County, Iowa.  
 Previously recorded in none in County Recorder's Office.  
(book, page, document number, etc.)

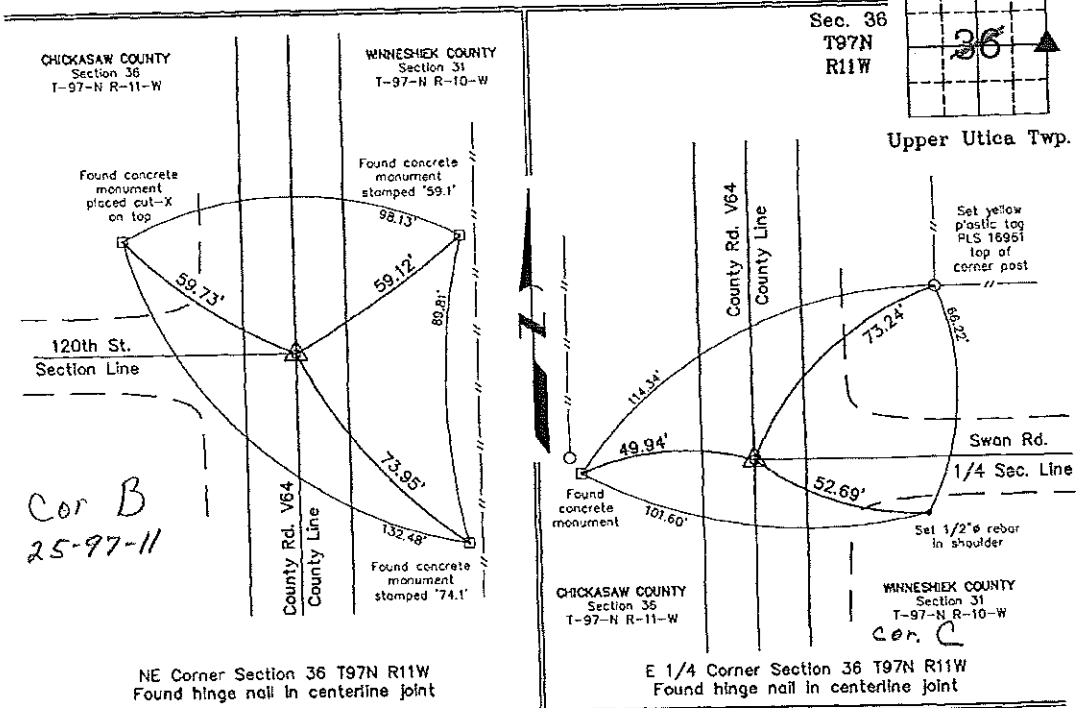
(Show reason for preparing this certificate, the evidence and detailed procedures used in establishing the corner positions and monumentation found or placed.)

Monument Description and Remarks: NE CORNER SECTION 36 T97N R11W: Found hinge nail in centerline joint.  
E 1/4 CORNER SECTION 36 T97N R11W: Found hinge nail in centerline joint.

NOTE: Both Corners were found with information obtained from a Survey and Plat made by L.P. Erdman recorded in the Chickasaw County Recorder's Office December 15, 1987 in Book 139, Page 378.

PLAN - VIEW

(Show a minimum of three reference ties to durable physical objects, relevant monuments and physical conditions that will enable recovery of the corner.)



Cor B  
 25-97-11

NE Corner Section 36 T97N R11W  
 Found hinge nail in centerline joint

E 1/4 Corner Section 36 T97N R11W  
 Found hinge nail in centerline joint



I hereby certify that this land surveying document was prepared and the related survey work was performed by me or under my direct personal supervision and that I am a duly licensed Land Surveyor under the laws of the State of Iowa.  
*Michael J. Shimak* September 21, 2005  
 Michael J. Shimak Date  
 License number 16961  
 My license renewal date is December 31, 2005.  
 Sheets covered by this seal: Individual

List Corners to be Indexed			
Corners	Section	Twp.	Range
NE	36	97N	11W
E 1/4	36	97N	11W

Project Number 05183.15  
 PB 46 PG. 50-51  
 X:\Section Corners\Sec. 36\36-97-11eo.dwg