

Corner B:
 Section 25-97-11
 As referred to in
 Engr. Tie Book.

FILED 2005 - 2063
 RECORDER'S OFFICE
 CHICKASAW COUNTY, IOWA
Fee \$700
 2005 SEP 21 AM 8 36
 CINDY HEDGERSMITH
 COUNTY RECORDER

TeKIPPE ENGINEERING, P.C., 128 South Vine Street, West Union, Iowa 52175 Phone (663) 422-5131

UNITED STATES PUBLIC LAND SURVEY CORNER CERTIFICATE

OF
 Land Survey Monuments situated in Section 36, Township 97 North, Range
11 West of the Fifth Principal Meridian, CHICKASAW County, Iowa.
 Previously recorded in none in County Recorder's Office.
(book, page, document number, etc.)

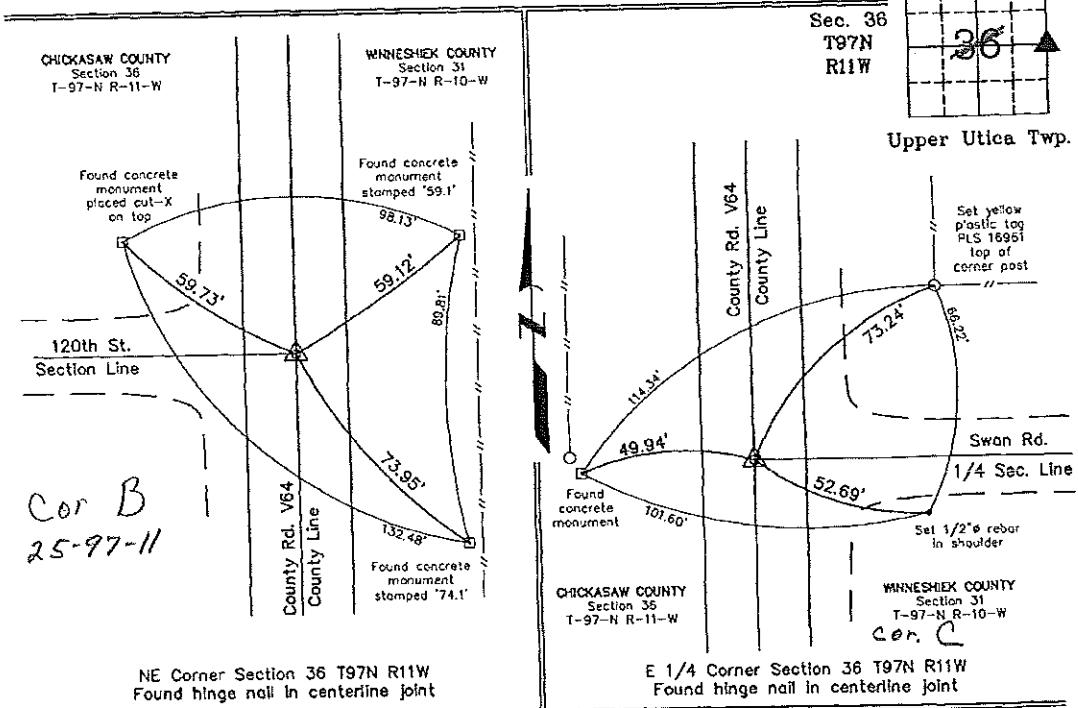
(Show reason for preparing this certificate, the evidence and detailed procedures used in establishing the corner positions and monumentation found or placed.)

Monument Description and Remarks: NE CORNER SECTION 36 T97N R11W: Found hinge nail in centerline joint.
E 1/4 CORNER SECTION 36 T97N R11W: Found hinge nail in centerline joint.

NOTE: Both Corners were found with information obtained from a Survey and Plat made by L.P. Erdman recorded in the Chickasaw County Recorder's Office December 15, 1987 in Book 139, Page 378.

PLAN - VIEW

(Show a minimum of three reference ties to durable physical objects, relevant monuments and physical conditions that will enable recovery of the corner.)



Cor B
 25-97-11



I hereby certify that this land surveying document was prepared and the related survey work was performed by me or under my direct personal supervision and that I am a duly licensed Land Surveyor under the laws of the State of Iowa.
Michael J. Shimak September 21, 2005
 Michael J. Shimak Date
 License number 16961
 My license renewal date is December 31, 2005.
 Sheets covered by this seal: Individual

List Corners to be Indexed			
Corners	Section	Twp.	Range
NE	36	97N	11W
E 1/4	36	97N	11W

Project Number 05183.15
 PB 46 PG. 50-51
 X:\Section Corners\Sec. 36\36-97-11eo.dwg