

Prepared by & Return to Herold - Reicks Surveying, 10 East Main Street, New Hampton, IA 50559, Ph. 641-394-2725

**UNITED STATES PUBLIC LAND SURVEY CORNER CERTIFICATE**

Land Survey Monuments situated in Section <sup>10</sup> 11, Township 96 North, Range 13 West of the Fifth Principal Meridian, Chickasaw County, Iowa. Previously recorded, Bk. 167, Pg. 426 in the County Recorder's office.

This certificate is being prepared in compliance with Iowa Code Chapter 355.11 because:

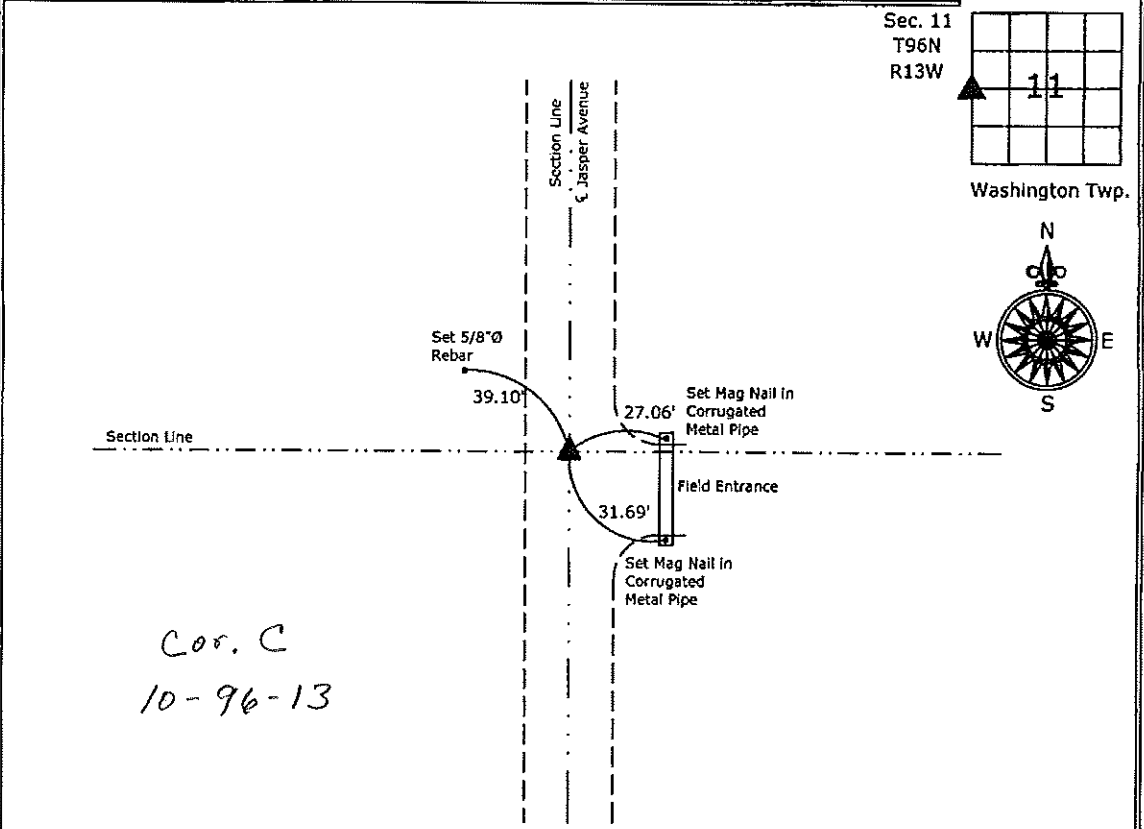
- There is no certificate on file for this corner.
- There are no longer three valid ties of record.
- There are changes to reference ties of record.
- There is change of monumentation of record.
- To clarify description of record monument (ties).

Monument Description and Remarks:

**West 1/4 Corner:** Found 1/2"Ø rebar with yellow plastic cap PLS 9018, from the previous Corner Certificate, all ties missing, added three new ties to update corner.

**PLAN - VIEW**

(Show a minimum of three reference ties to durable physical objects, relevant monuments and physical conditions that will enable recovery of the corner.)



Cor. C  
 10-96-13

**Northeast Corner Section 11-96-13**  
 Found 1/2"Ø rebar with yellow plastic cap PLS 9018



I hereby certify that this land surveying document was prepared and the related survey work was performed by me or under my direct personal supervision and that I am a duly licensed Land Surveyor under the laws of the State of Iowa.

*Paul R. Herold* 12-15-11  
 Paul R. Herold Date:  
 License number 19211  
 My license renewal date is December 31, 2012.  
 Sheets covered by this seal: Individual sheet only

List Corners to be Indexed			
Corners	Section	Twp.	Range
W 1/4	11	96	13
Project Number: 2011-128			
FB: Chickasaw County 4, Pgs. 12			

File: S:\\_C3D Projects\2011\2011-128\FRS\SCC Dwg\2011-128-SCC.dwg, 12/14/2011 2:27:13 PM

# UNITED STATES PUBLIC LAND SURVEY CORNER CERTIFICATE

OF

Land Survey Monuments situated in Section 11 3, Township 96 North, Range 13 West, of the Fifth Principal Meridian, Chickasaw County, Iowa.  
 Previously recorded in N/A in County Recorder's Office.

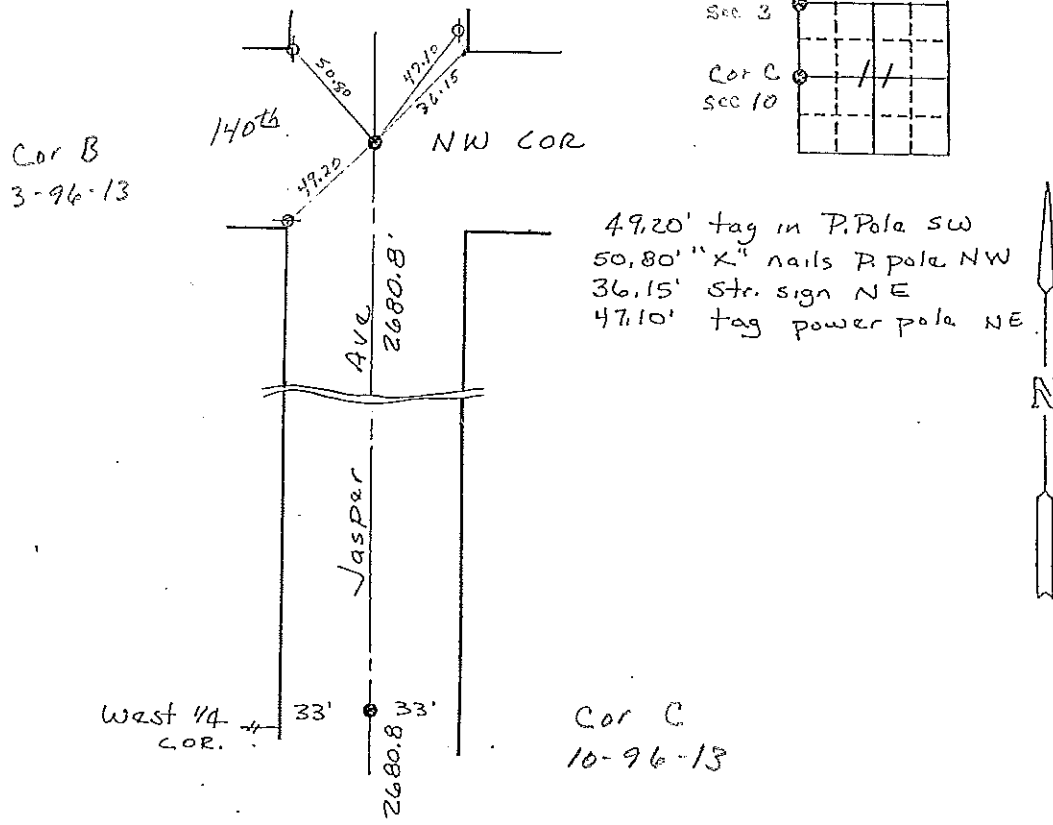
(book, page, document number, etc.)  
 (Show reason for preparing this certificate, the evidence and detailed procedures used in establishing the corner positions and monumentation found or placed.)

Monument Description and Remarks: Found iron pin at NW corner section.  
Set 1/2" rebar at West 1/4 cor. Set rebar at equal distance  
between NW cor. and SW cor. of section. County has show dim.  
to be equal. Pin set is on fence line to west. Set pin  
at split of N-S fences.

*Section 3-96-13  
 AS referred to in  
 Engr. TIC Book*

### PLAN - VIEW

(Show a minimum of three reference ties to durable physical objects, relevant monuments and physical conditions that will enable recovery of the corner.)



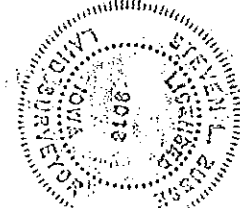
I hereby certify that the survey work was completed and this land surveying document was prepared by me or under my direct personal supervision and that I am a duly registered land surveyor under the laws of the state of Iowa

Signature: Steve Busse  
 Name typed or printed: STEVE BUSSE

Date: 5/19/98 Reg. No. 9018

My registration renewal date is December 31, 1998

SEAL



Corners	List Corners to be Indexed Section	Twp	Range
NW COR.	11	96	13
W 1/4 COR.	11	96	13

XX DOCUMENT No. 02401  
 C RECORDING FEE \$ 6.00  
 M TRANSFER FEE \$ —

FILED FOR RECORD THE 27th DAY OF May 1998 AT 8:30 O'CLOCK 167 M. BOOK Dec PAGE 426

STATE OF IOWA, CHICKASAW COUNTY.  
 By: Leitha N. Ross Recorder  
 LEITHA N. ROSS Deputy

**PLAT OF SURVEY  
 FOR  
 FRANCIS DEUTSCH**

Section 3-96-13  
 As referred to in  
 Engr. Title Book

DESCRIPTION OF PARCEL A IN THE NORTHWEST 1/4 OF SECTION 11, TOWNSHIP 96 NORTH, RANGE 13 WEST OF THE 5TH P.M., CHICKASAW COUNTY, IOWA DESCRIBED AS FOLLOWS:  
 BEGINNING AT A POINT ON THE SECTION LINE THAT IS SOUTH 0°00' WEST 510.80 FEET FROM THE NORTHWEST CORNER OF SAID SECTION 11; THENCE NORTH 90°00' EAST 392.00 FEET; THENCE SOUTH 0°00' WEST 842.00 FEET; THENCE SOUTH 90°00' WEST 842.00 FEET TO THE WEST LINE OF SAID NORTHWEST 1/4; THENCE NORTH 0°00' EAST 842.00 FEET TO THE POINT OF BEGINNING.  
 SAID PARCEL CONTAINS 7.58 ACRES, INCLUDING 0.64 ACRES IN RIGHT OF WAY.  
 NOTE: THE WEST LINE OF THE NORTHWEST 1/4 OF SECTION 11 WAS ASSUMED TO BEAR NORTH 0°00' EAST FOR THIS DESCRIPTION.

Cor B  
 3-96-13

POINT OF BEGINNING

NW COR. 11-96-13  
 F.D. IRON PIN

510.80'

N 90°00' E 392.00'

33' RIGHT OF WAY LINE

PARCEL A

CONTAINS 7.58 AC.  
 LESS ROW 0.64 AC.  
 6.94 AC.

N 0°00' E 842.00'

S 0°00' W 842.00'

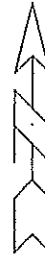
1328.0'

S 90°00' W 392.00'

WEST 1/4 COR.  
 SET 1/2' REBAR/CAP

Cor. C  
 10-96-13

PARCEL CONTAINS 0.11 AC. IN SW 1/4 NW 1/4 INCLUDING 0.01 AC. IN ROW AND 7.47 AC. IN NW 1/4 NW 1/4 INCLUDING 0.63 AC. IN ROW



NORTH LINE SW 1/4 NW 1/4

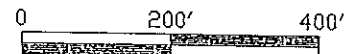
I HEREBY CERTIFY THAT THIS PLAT, MAP, SURVEY OR REPORT WAS MADE BY ME OR UNDER MY DIRECT PERSONAL SUPERVISION AND THAT I AM A DULY LICENSED LAND SURVEYOR UNDER THE LAWS OF THE STATE OF IOWA.

*Steve Busse*  
 STEVE BUSSE

DATE 5/19/98 IOWA REG. NO. 9018

MY LICENSE IS SUBJECT TO RENEWAL ON DEC 31, 1998

- ⊙ INDICATES CORNERS FOUND
- INDICATES 1/2" REBAR WITH CAP SET
- ## INDICATES EXISTING FENCE LINE



Scale 1" = 200'