

Prepared by & Return to: Herold - Recks Surveying, 10 East Main Street, New Hampton, IA 50659, Ph. 641-384-2725

**UNITED STATES PUBLIC LAND SURVEY CORNER CERTIFICATE**

Land Survey Monuments situated in Section **11**, Township **96** North, Range **13** West of the Fifth Principal Meridian, Chickasaw County, Iowa. **1., 2.)** Not previously recorded in the County Recorder's office.

This certificate is being prepared in compliance with Iowa Code Chapter 355.11 because:

- 1., 2.) There is no certificate on file for this corner.
- There are no longer three valid ties of record.
- There are changes to reference ties of record.
- There is change of monumentation of record.
- To clarify description of record monument (ties).

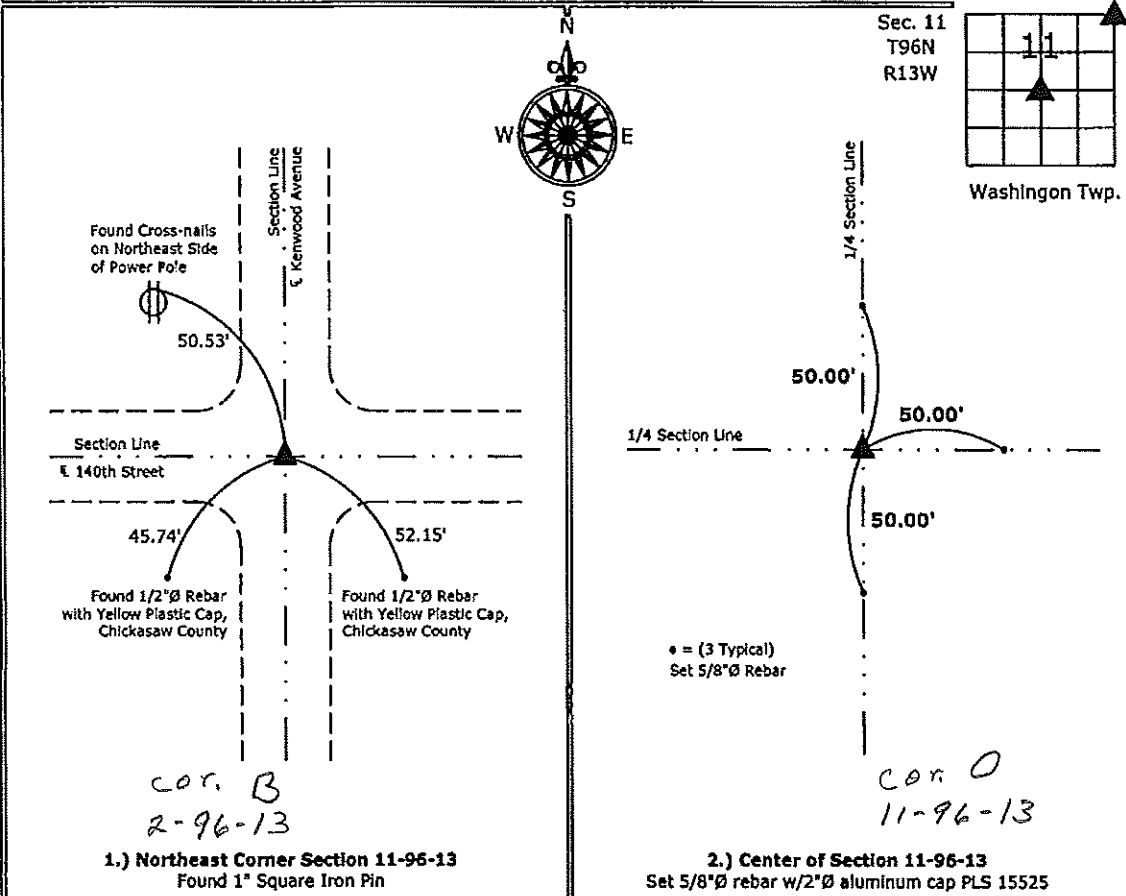
Monument Description and Remarks:

**1.) Northeast Corner:** Found 1" square iron pin, from ties obtained from the County Engineers Office in field book Washington Township Section 2, Corner "B".

**2.) Center of Section:** Set 5/8"Ø rebar with 2"Ø aluminum Cap PLS 15525 at the intersection of the Quarter Section lines.

**PLAN - VIEW**

(Show a minimum of three reference ties to durable physical objects, relevant monuments and physical conditions that will enable recovery of the corner.)



**1.) Northeast Corner Section 11-96-13**  
 Found 1" Square Iron Pin

**2.) Center of Section 11-96-13**  
 Set 5/8"Ø rebar w/2"Ø aluminum cap PLS 15525



I hereby certify that this land surveying document was prepared and the related survey work was performed by me or under my direct personal supervision and that I am a duly licensed Land Surveyor under the laws of the State of Iowa.

*Paul R. Herold* 12-15-11  
 Paul R. Herold Date:  
 License number 15525  
 My license renewal date is December 31, 2012.  
 Sheets covered by this seal: Individual sheet only

List Corners to be Indexed			
Corners	Section	Twp.	Range
NE	11	96	13
CTR	11	96	13

Project Number: 2011-128

FB: Chickasaw County 4, Pgs. 12