

Prepared by & Return to: Herold - Reicks Surveying, 10 East Main Street, New Hampton, IA 50659, Ph. 641-394-2725

UNITED STATES PUBLIC LAND SURVEY CORNER CERTIFICATE

Land Survey Monuments situated in Section ²11, Township 96 North, Range 13 West of the Fifth Principal Meridian, Chickasaw County, Iowa. 1.) & 2.) Not previously recorded in the County Recorder's office.

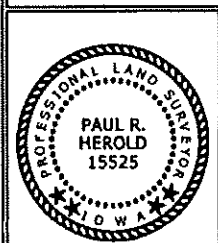
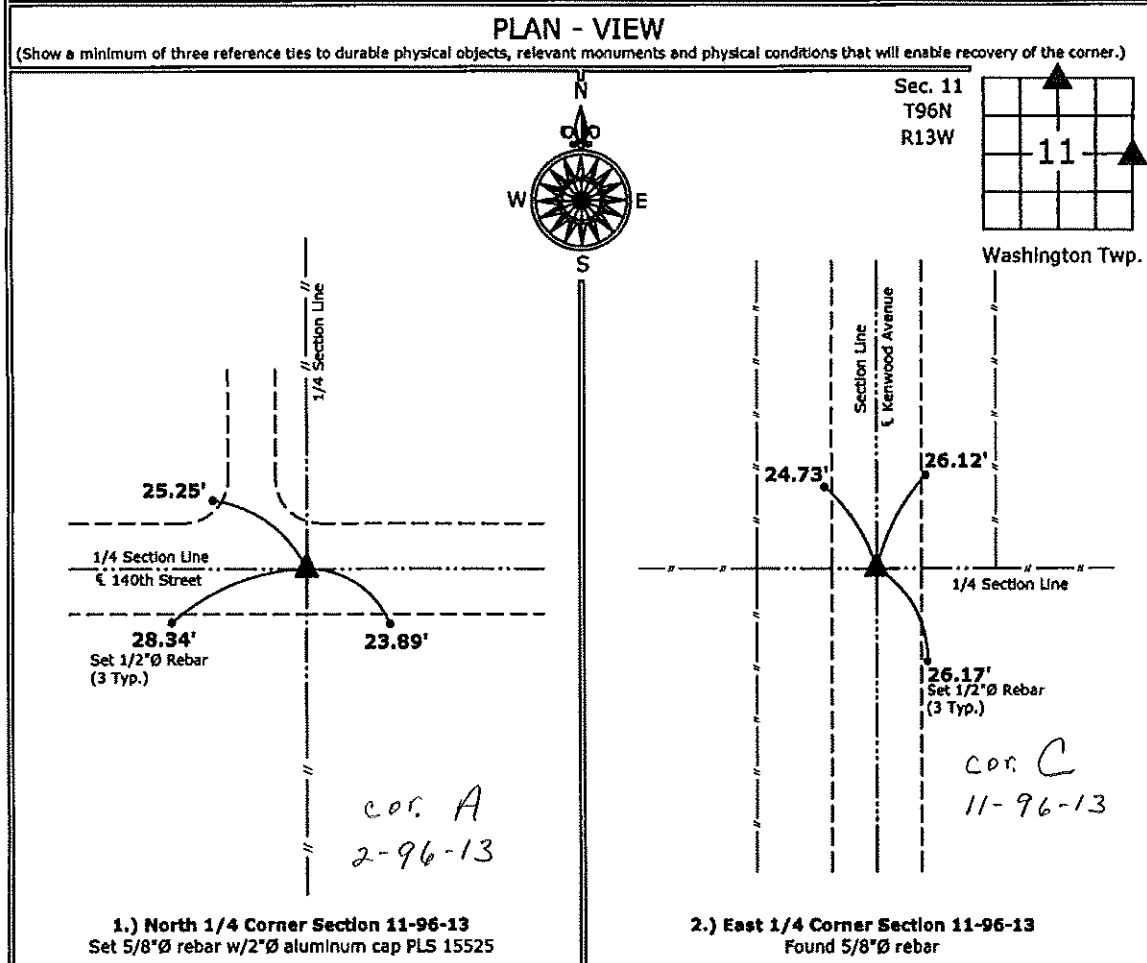
This certificate is being prepared in compliance with Iowa Code Chapter 355.11 because:

1.) & 2.) There are no certificates on file for these corners.
 There are no longer three valid ties of record.
 There are changes to reference ties of record.
 There is change of monumentation of record.
 To clarify description of record monument (ties).

Monument Description and Remarks:

1.) **North 1/4 Corner:** Set 5/8"Ø rebar with 2"Ø aluminum cap PLS 15525 in the center of the road on the line fences North and South, the corner monument indicated in the County Engineer's notes was not found.

2.) **East 1/4 Corner:** Found 5/8"Ø rebar with information obtained from the County Engineer's office.



I hereby certify that this land surveying document was prepared and the related survey work was performed by me or under my direct personal supervision and that I am a duly licensed Land Surveyor under the laws of the State of Iowa.

Paul R. Herold 9-23-11
 Paul R. Herold Date:

License number 15525
 My license renewal date is December 31, 2012.
 Sheets covered by this seal: Individual sheet only

List Corners to be Indexed			
Corners	Section	Twp.	Range
N 1/4	11	96	13
E 1/4	11	96	13

Project Number: 2011-096
 FB: Chickasaw County 4, Pgs. 12-13