

Instrument #: 2022-1886
 10/14/2022 03:34:21 PM Total Pages: 1
 SCC SECTION CORNER CERTIFICATES
 Recording Fee: \$ 7.00
 Shirley Troyna, Recorder, Chickasaw County Iowa



Prepared by: Kyle A. Johnson Address: 1900 MEDICAL ARTS AVE S, SUITE 100 SARTELL, MN Phone: 1-888-937-5150

UNITED STATES PUBLIC LAND SURVEY CORNER CERTIFICATE FOR

Land survey monuments situated in Section 13, Township 96 NORTH
 Range 13 WEST, of the Fifth Principal Meridian, CHICKASAW County, Iowa.
 Previously Recorded in _____ in County Recorder's Office.

(Show reason for preparing this certificate, the evidence and detailed procedures used in establishing the corner positions and monumentation found or placed.)

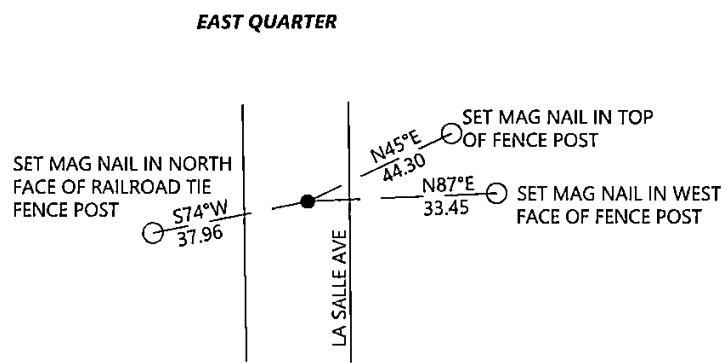
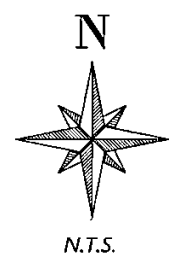
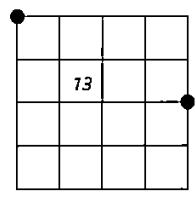
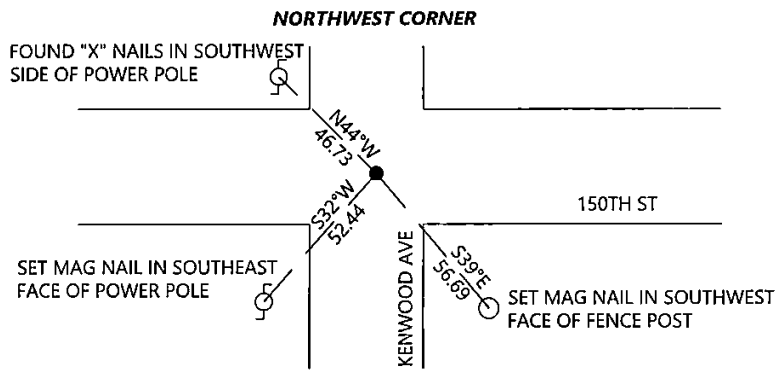
MONUMENT DESCRIPTION AND REMARKS:

EAST QUARTER: Westwood Professional Services found a 1.5" illegible aluminum cap 0.2' deep. Agrees with distances per previous records. Accepting corner location and set 3 ties. Filing corner record as there are no longer three valid ties of record.

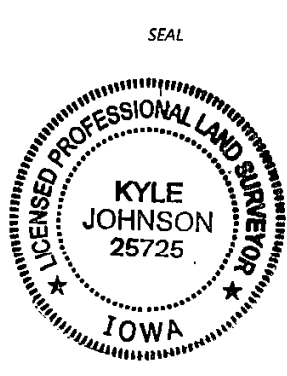
NORTHWEST CORNER: Westwood Professional Services found a 5/8" rebar 1.0' deep. Found 1 tie from 1994 record and 1 tie from engineers tie book. Accepting corner location and set 2 ties. Filing corner record as there are no longer 3 valid ties of record.

PLAN - VIEW

(Show a minimum of three reference ties to durable physical objects, relevant monuments and physical conditions that will enable recovery of the corner.)



Cor. C 13-96-13



I hereby certify that this land surveying document was prepared and the related survey work was performed by me or under my direct personal supervision and that I am a duly licensed Land Surveyor under the laws of the state of Iowa.

Kyle Johnson 10/14/2022
 Signature Date

Typed/Printed Name: Kyle A. Johnson

License Number: 25725

My license renewal date is December 31, 2022

Pages or sheets covered by this seat: THIS SHEET

Corners to be Indexed

Corners	Section	Twp.	Range
EQ	13	96	13
NW	13	96	13