

Prepared by & Return to: Harold - Reicks Surveying, 19 East Main Street, New Hampton, IA 50658, Ph. 641-394-2725

UNITED STATES PUBLIC LAND SURVEY CORNER CERTIFICATE

Land Survey Monuments situated in Section ¹² 13, Township 96 North, Range 13 West of the Fifth Principal Meridian, Chickasaw County, Iowa. 1., 2.) Not previously recorded in the County Recorder's office.

This certificate is being prepared in compliance with Iowa Code Chapter 355.11 because:

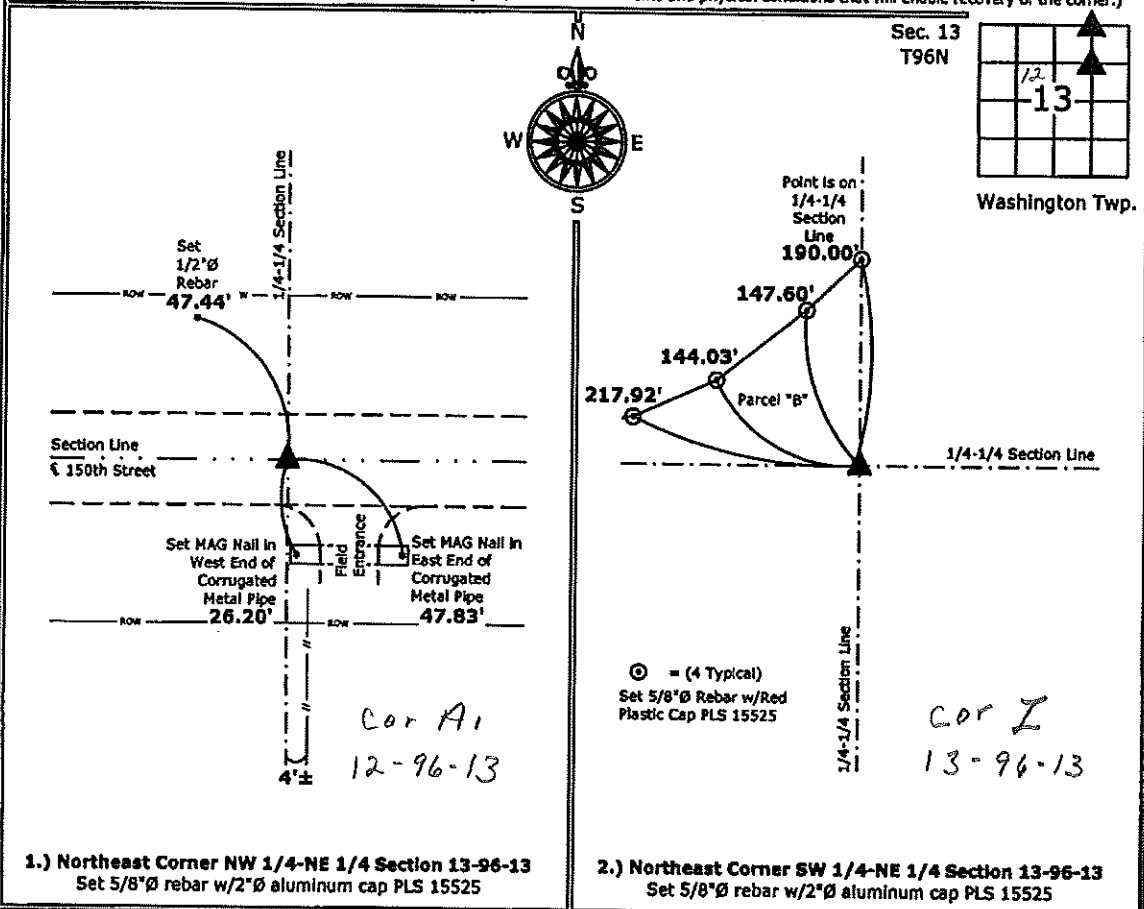
- There is no certificate on file for this corner.
- There are no longer three valid ties of record.
- There are changes to reference ties of record.
- There is change of monumentation of record.
- To clarify description of record monument (ties).

Monument Description and Remarks:

- 1.) Northeast Corner NW 1/4-NE 1/4: Set 5/8"Ø rebar with 2"Ø aluminum Cap PLS 15525 equidistant and online between the North 1/4 and Northeast Corners of Section 13.
- 2.) Northeast Corner SW 1/4-NE 1/4: Set 5/8"Ø rebar with 2"Ø aluminum Cap PLS 15525 at the intersection of the Quarter-Quarter Section Lines.

PLAN - VIEW

(Show a minimum of three reference ties to durable physical objects, relevant monuments and physical conditions that will enable recovery of the corner.)



1.) Northeast Corner NW 1/4-NE 1/4 Section 13-96-13
 Set 5/8"Ø rebar w/2"Ø aluminum cap PLS 15525

2.) Northeast Corner SW 1/4-NE 1/4 Section 13-96-13
 Set 5/8"Ø rebar w/2"Ø aluminum cap PLS 15525



I hereby certify that this land surveying document was prepared and the related survey work was performed by me or under my direct personal supervision and that I am a duly licensed Land Surveyor under the laws of the State of Iowa.

Paul R. Herold 1-12-12
 Paul R. Herold Date:

License number 15525
 My license renewal date is December 31, 2012.
 Sheets covered by this seal: Individual sheet only

List Corners to be Indexed			
Corners	Section	Twp.	Range
NE-NW-NE	13	96	13
NE-SW-NE	13	96	13