

UNITED STATES PUBLIC LAND SURVEY CORNER CERTIFICATE

OF

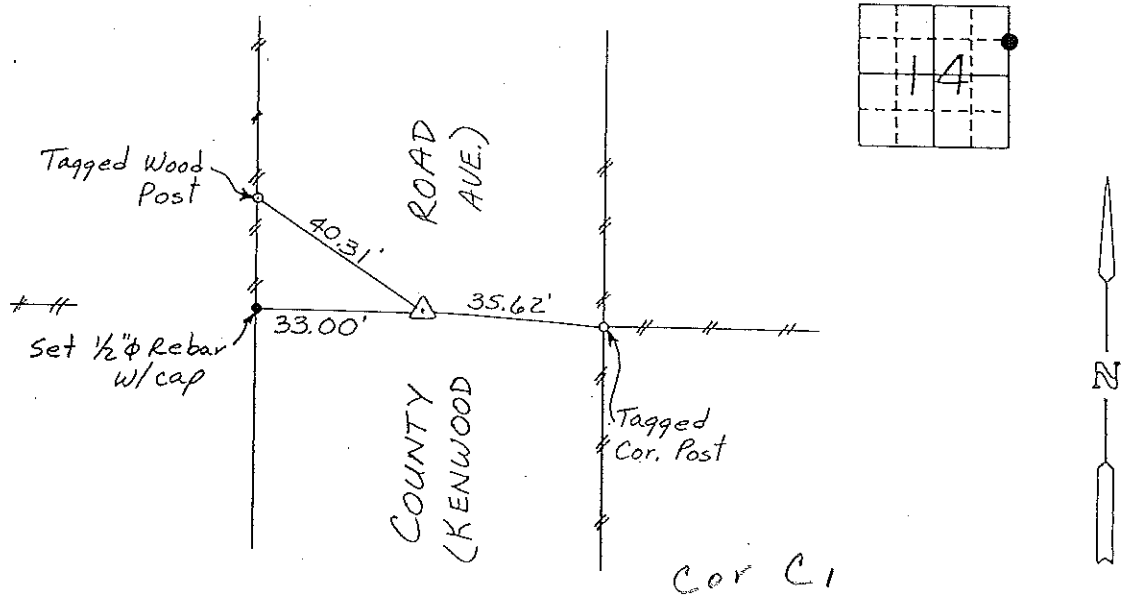
Land Survey Monuments situated in Section 14, Township 96 NORTH, Range 13 WEST, of the Fifth Principal Meridian, CHICKASAW County, Iowa. Previously recorded in (NONE) in County Recorder's Office.

(Show reason for preparing this certificate, the evidence and detailed procedures used in establishing the corner positions and monumentation found or placed.)

Monument Description and Remarks: SE COR., NE 1/4 - NE 1/4, SECTION 14-T96N-R13W:
SET 1/2" φ REBAR WITH CAP MIDWAY ON LINE BETWEEN
NE CORNER & E. 1/4 CORNER.

PLAN - VIEW

(Show a minimum of three reference ties to durable physical objects, relevant monuments and physical conditions that will enable recovery of the corner.)



SE CORNER OF NE 1/4 - NE 1/4 OF SECTION 14-T96N-R13W

I hereby certify that the survey work was completed and this certificate was prepared by me or under my direct personal supervision and that I am a duly registered land surveyor under the laws of the state of Iowa.

Signature: Gary L. Casady
Name typed or printed: Gary L. Casady

Date: 3-23-93 Reg. No. 12532

My Registration Expires December 31, 1994

Comers	List Comers to be Indexed Section	Twp	Range
SE Cor.	NE 1/4 - NE 1/4	14	96N 13W

Corner C1 14-96-13

Placed in file book 4/1/93

SEAL

