

UNITED STATES PUBLIC LAND SURVEY CORNER CERTIFICATE

OF

Land Survey Monuments situated in Section 14, Township 96 NORTH, Range 13 WEST of the Fifth Principal Meridian, CHICKASAW County, Iowa. Previously recorded in (NONE) in County Recorder's Office.

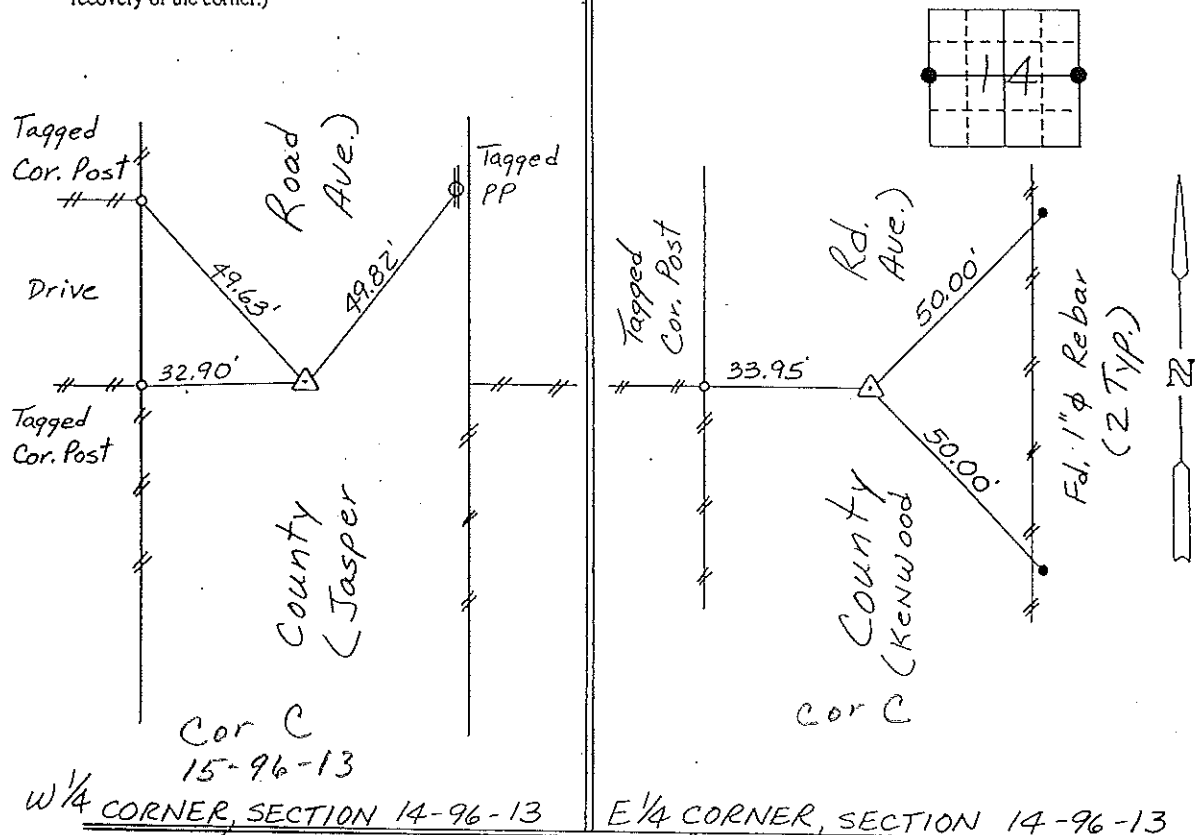
(Show reason for preparing this certificate, the evidence and detailed procedures used in establishing the corner positions and monumentation found or placed.)

Monument Description and Remarks: W 1/4 CORNER, SECTION 14-T96N-R13W: SET 1/2" Ø REBAR WITH CAP FROM TIES.

E 1/4 CORNER, SECTION 14-T96N-R13W: SET 1/2" Ø REBAR WITH CAP FROM TIES.

PLAN - VIEW

(Show a minimum of three reference ties to durable physical objects, relevant monuments and physical conditions that will enable recovery of the corner.)

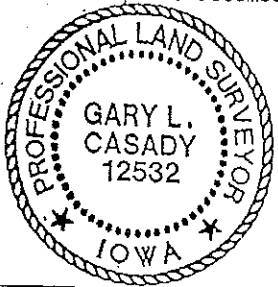


I hereby certify that the survey work was completed and this certificate was prepared by me or under my direct personal supervision and that I am a duly registered land surveyor under the laws of the state of Iowa.

Signature: Gary L. Casady
Name typed or printed: Gary L. Casady
Date: 3-23-93 Reg. No. 12532
My Registration Expires December 31, 1994

| Corners | List Corners to be Indexed Section | Twp | Range |
|---------|------------------------------------|----------|-------|
| W 1/4 | 14 | 96N | 13W |
| ↖ | COR C | 15-96-13 | |
| E 1/4 | 14 | 96N | 13W |
| ↖ | COR C | 14-96-13 | |

Placed in tie book 4/1/93



SEAL